

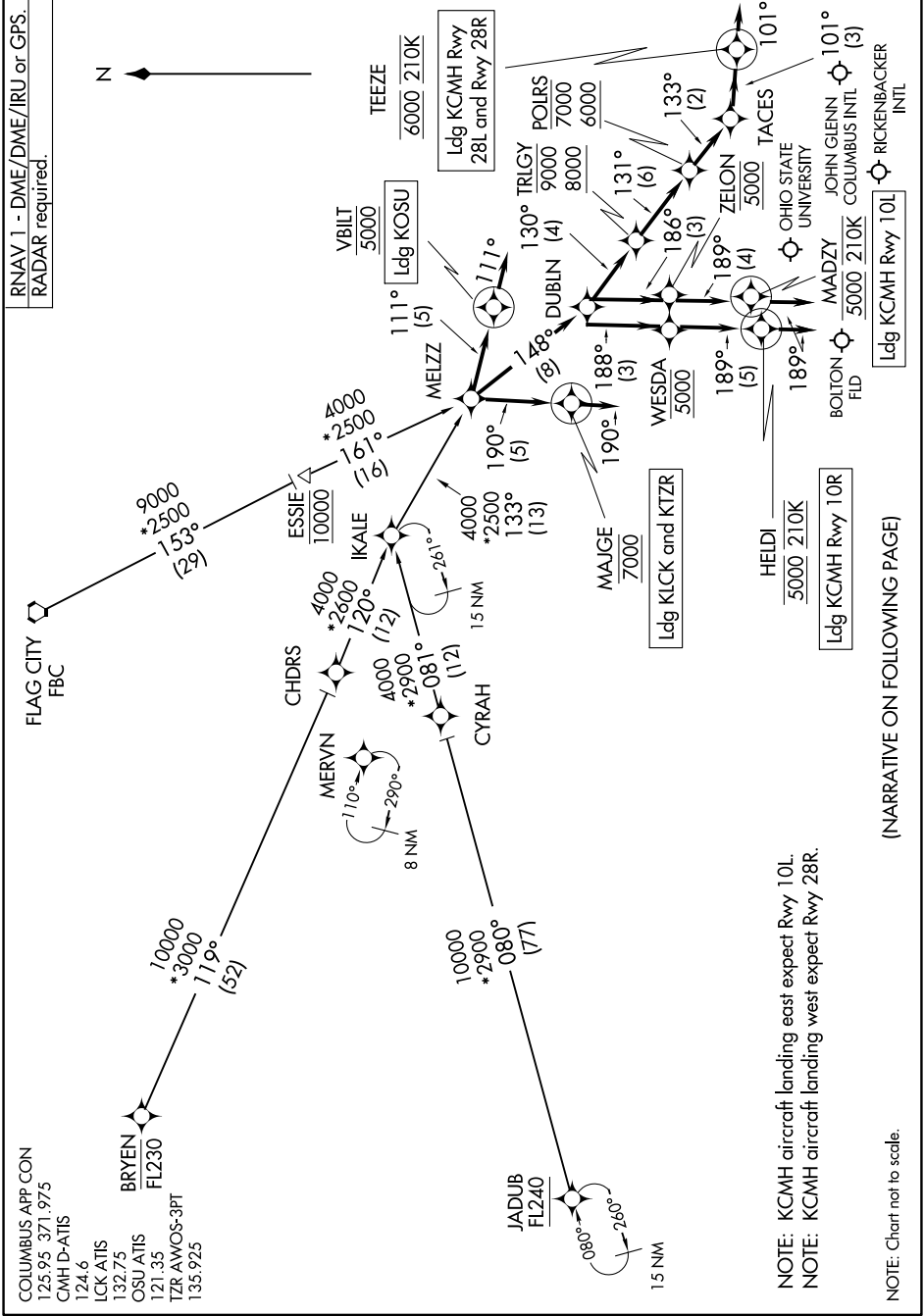
(MELZZ.DUBLN1) 23166

AL-94 (FAA)

DUBLIN ONE ARRIVAL (RNAV)

COLUMBUS, OHIO

RNAV 1 - DME/DME/IRU or GPS.
RADAR required.



EC-2, 11 JUL 2024 to 08 AUG 2024

COLUMBUS APP CON
125.95 371.975
CMH D-ATIS
124.6
LCK ATIS
132.75
OSU ATIS
121.35
TZR AWOS-3PT
135.925

NOTE: KCMH aircraft landing east expect Rwy 10L.
NOTE: KCMH aircraft landing west expect Rwy 28R.

NOTE: Chart not to scale.

(NARRATIVE ON FOLLOWING PAGE)

EC-2, 11 JUL 2024 to 08 AUG 2024

DUBLIN ONE ARRIVAL (RNAV)
(MELZZ.DUBLN1) 12AUG21

COLUMBUS, OHIO