

LOC/DME I-AQI <b>111.75</b> Chan <b>54 (Y)</b>	APP CRS <b>101°</b>	Rwy Idg <b>10113</b> TDZE <b>809</b> Apt Elev <b>815</b>
--	------------------------	--

# ILS RWY 10R (SA CAT I & II)

JOHN GLENN COLUMBUS INTL (CMH)

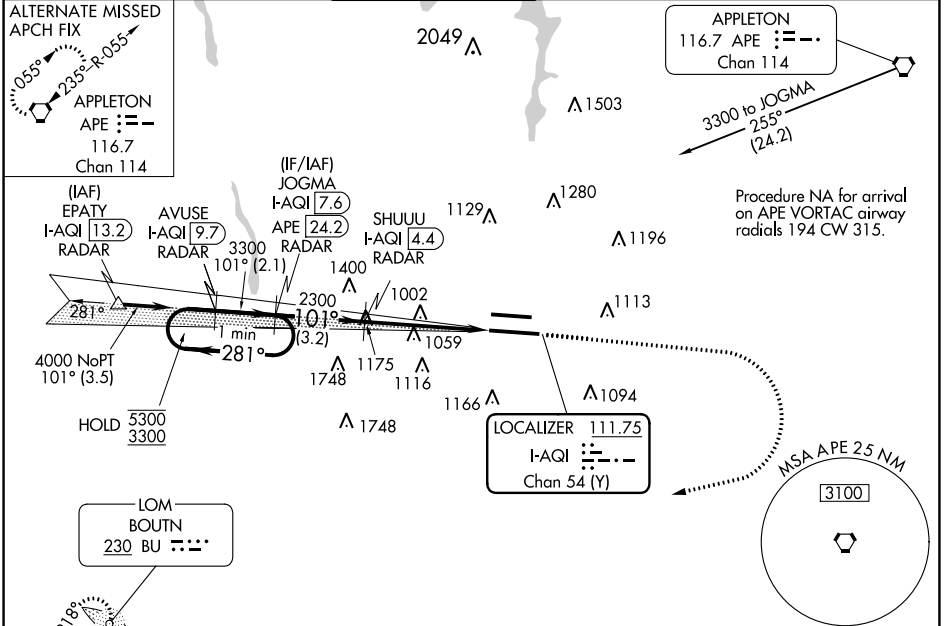
ADF required. DME or RADAR required.

Simultaneous approach authorized.  
SA CAT I, SA CAT II: Requires specific OPSPEC, MSPEC, or LOA approval.

MALSR

MISSED APPROACH: Climb to 1400 then climbing right turn to 3000 direct BU LOM and hold.

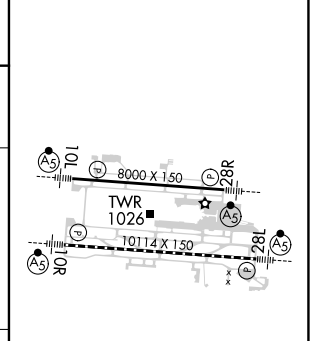
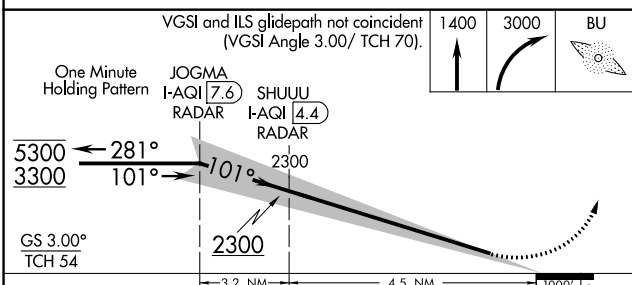
D-ATIS <b>124.6</b>	COLUMBUS APP CON <b>125.95 371.975</b>	COLUMBUS TOWER <b>132.7 257.8</b>	GND CON <b>121.9 348.6</b>	CLNC DEL <b>126.3</b>	CPDLC
------------------------	---	--------------------------------------	-------------------------------	--------------------------	-------



EC-2, 11 JUL 2024 to 08 AUG 2024

EC-2, 11 JUL 2024 to 08 AUG 2024

ELEV 815	<b>D</b> TDZE 809
----------	-------------------



CATEGORY	A	B	C	D
S-ILS 10R	SA CAT I	RA 146/14	150 DA 959	
S-ILS 10R	SA CAT II	RA 99/12	100 DA 909	

## SA CATEGORY I & II ILS- SPECIAL AIRCREW & AIRCRAFT CERTIFICATION REQUIRED

TDZ/CL Rwy 10R-28L  
HIRL Rwy 10R-28L and 10L-28R