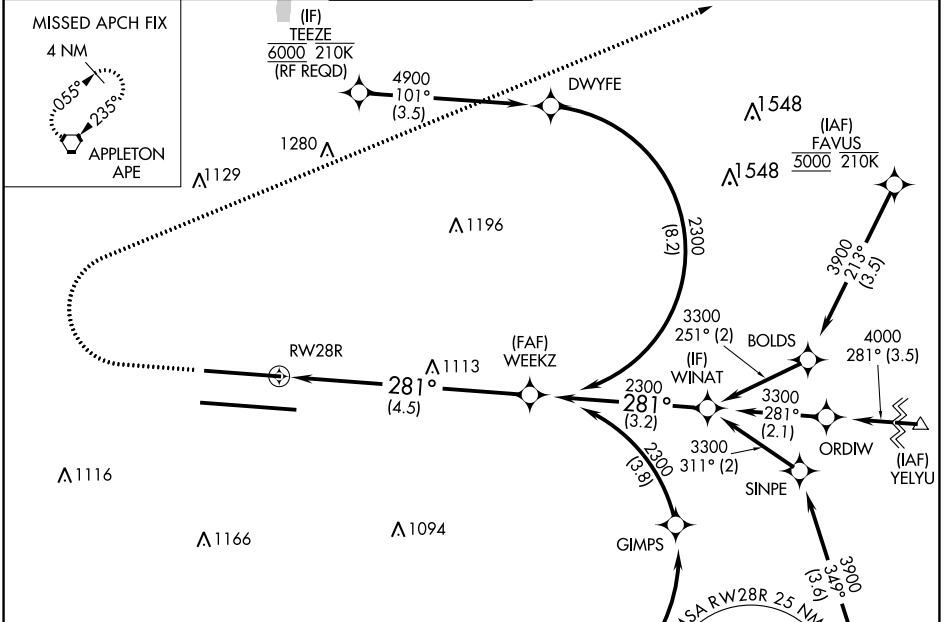


APP CRS	Rwy Idg	8000
281°	TDZE	813
	Apt Elev	815

RNAV (RNP) Z RWY 28R

JOHN GLENN COLUMBUS INTL (CMH)

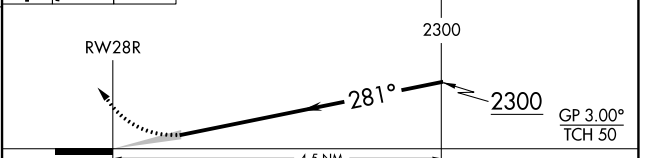
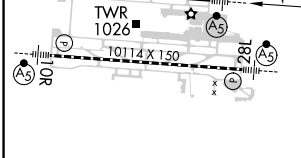
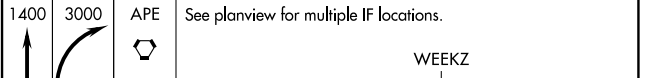
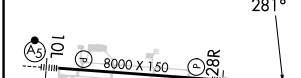
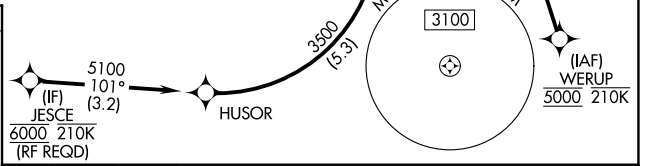
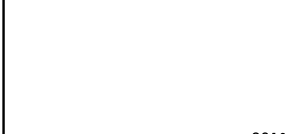
RNP AR APCH.		MALSR		MISSED APPROACH: Climb to 1400 then climbing right turn to 3000 to APE VORTAC and hold.	
<p>▼ For uncompensated Baro-VNAV systems, procedure NA below -19°C or above 54°C. For inop ALS, increase RNP 0.16 all Cats visibility to RVR 4500 and increase RNP 0.30 all Cats visibility to RVR 5500. Simultaneous approach authorized.</p>					
D-ATIS	COLUMBUS APP CON	COLUMBUS TOWER	GND CON	CLNC DEL	CPDLC
124.6	125.95 371.975	132.7 257.8	121.9 348.6	126.3	



EC-2, 11 JUL 2024 to 08 AUG 2024

EC-2, 11 JUL 2024 to 08 AUG 2024

ELEV	815	D	TDZE	813
------	------------	----------	------	------------



CATEGORY	A	B	C	D
RNP 0.16 DA	1129/24	316 (400-½)		
RNP 0.30 DA	1185/35	372 (400-¾)		

TDZ/CL Rwy 10R-28L
HIRL Rwy 10R-28L and 10L-28R

AUTHORIZATION REQUIRED