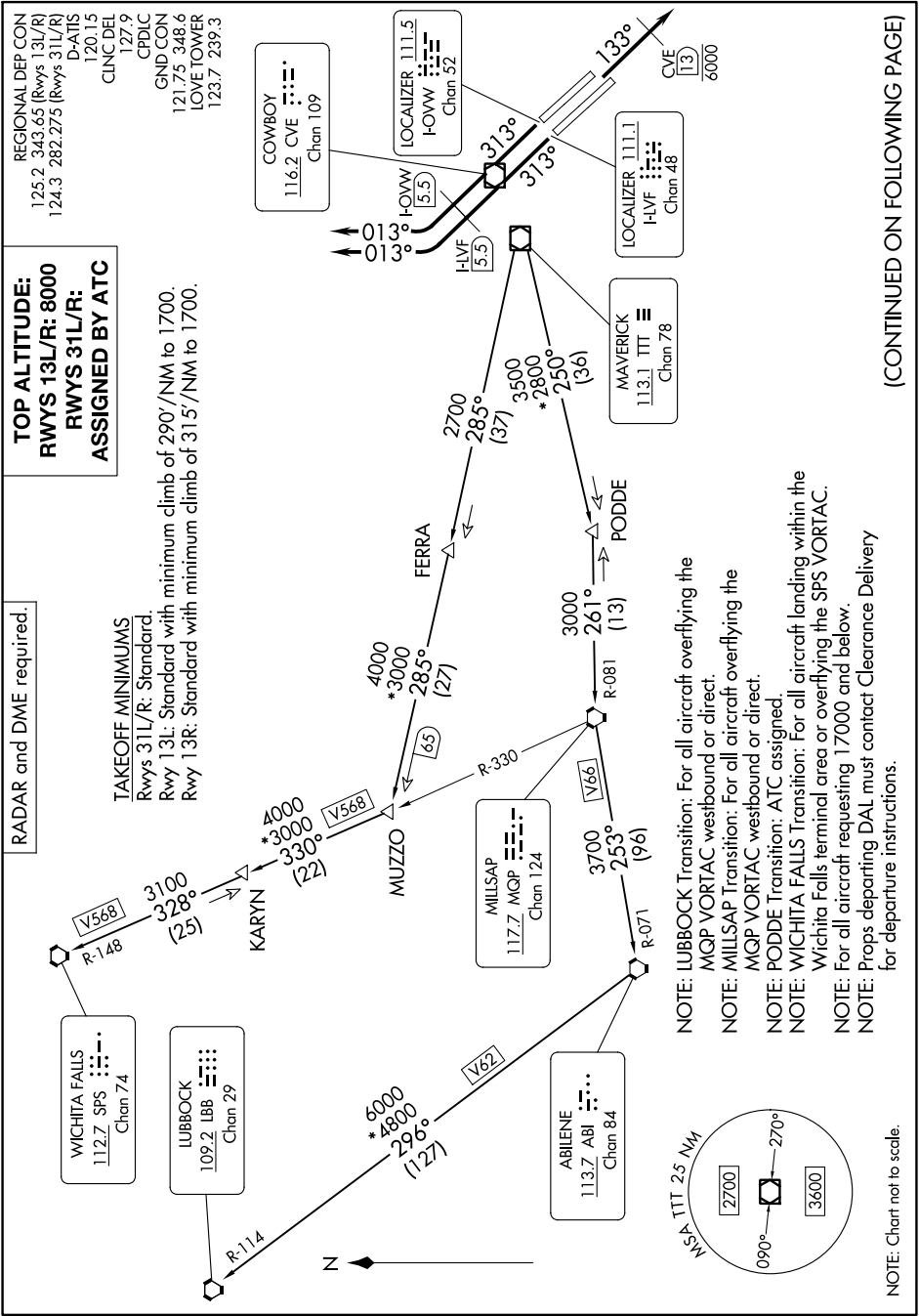


# KINGDOM FOUR DEPARTURE

SC-2, 11 JUL 2024 to 08 AUG 2024



(CONTINUED ON FOLLOWING PAGE)

**NOTE:** LUBBOCK Transition: For all aircraft overlying the MQP VORTAC westbound or direct.

**NOTE:** MILLSAP Transition: For all aircraft overlying the MQP VORTAC westbound or direct.

**NOTE:** PODDE Transition: ATC assigned.

**NOTE:** WICHITA FALLS Transition: For all aircraft landing within the Wichita Falls terminal area or overlying the SPS VORTAC.

**NOTE:** For all aircraft requesting 17000 and below.

**NOTE:** Props departing DAL must contact Clearance Delivery for departure instructions.

NOTE: Chart not to scale.

SC-2, 11 JUL 2024 to 08 AUG 2024

# KINGDOM FOUR DEPARTURE