

# VENUS FOUR DEPARTURE

D-ATIS  
120.15  
CLNC DEL  
127.9  
CPDLC  
GND CON  
121.75 348.6  
LOVE TOWER  
123.7 239.3  
REGIONAL DEP CON  
125.125 353.95

RADAR required. DME required.

LOCALIZER 111.1  
I-DPX  
Chan 48

**TOP ALTITUDE:  
5000**

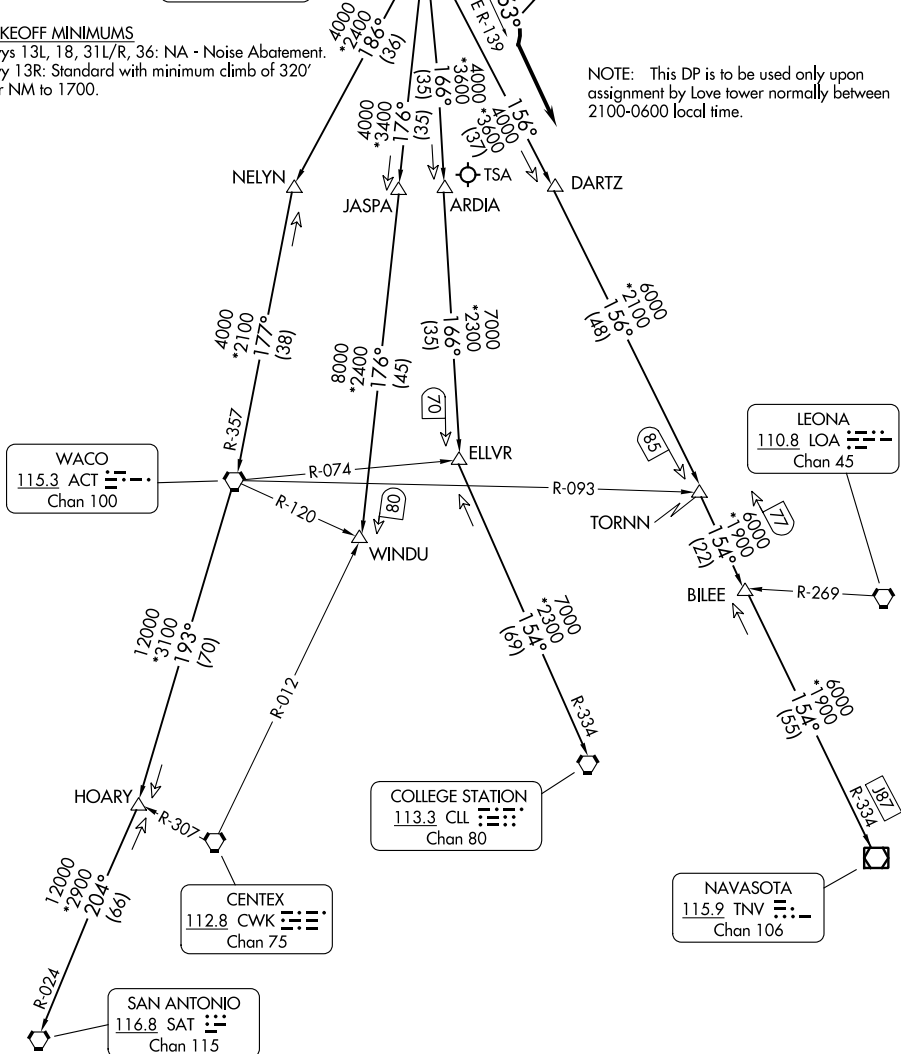
COWBOY  
116.2 CVE  
Chan 109

MAVERICK  
113.1 TTT  
Chan 78

### TAKEOFF MINIMUMS

Rwys 13L, 18, 31L/R, 36: NA - Noise Abatement.  
Rwy 13R: Standard with minimum climb of 320' per NM to 1700.

NOTE: This DP is to be used only upon assignment by Love tower normally between 2100-0600 local time.



SC-2, 11 JUL 2024 to 08 AUG 2024

SC-2, 11 JUL 2024 to 08 AUG 2024

(CONTINUED ON FOLLOWING PAGE)

NOTE: Chart not to scale.

# VENUS FOUR DEPARTURE