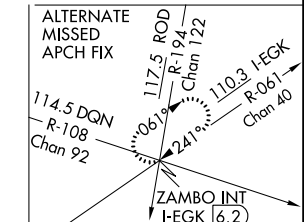
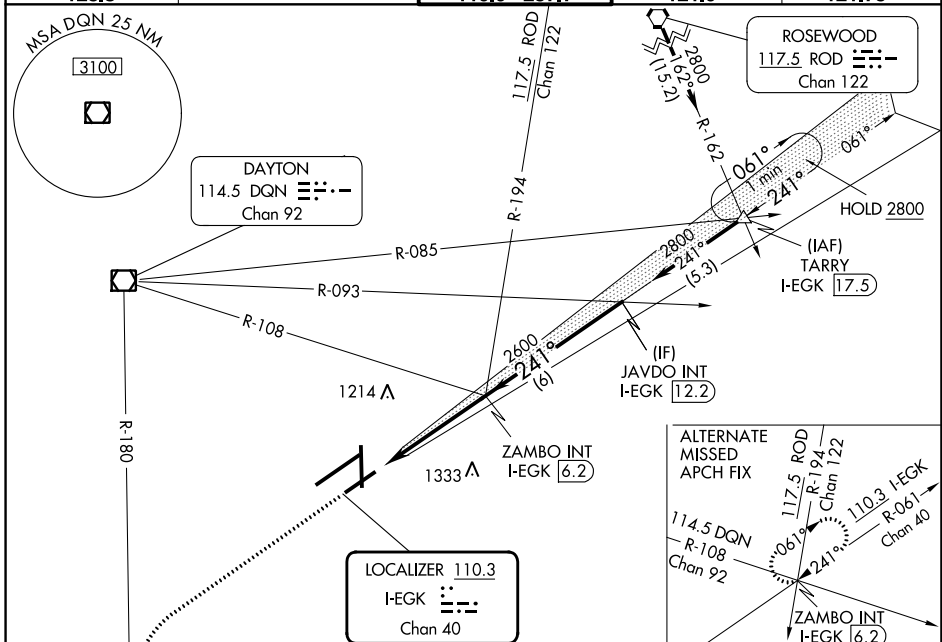


LOC I-EKG 110.3 Chan 40	APP CRS 241°	Rwy Idg TDZE Apt Elev 7001 1007 1009
--------------------------------------	------------------------	--

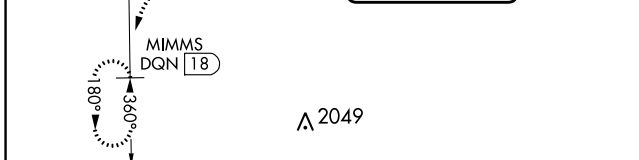
ILS or LOC RWY 24L

JAMES M COX DAYTON INTL (DAY)

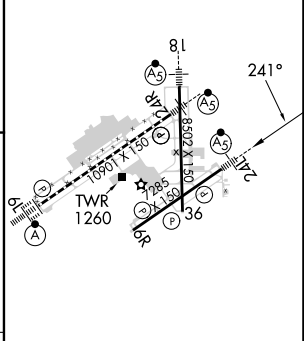
DME required.		MALSR	MISSED APPROACH: Climb to 3000 on heading 241° and DQN R-180 to MIMMS/DQN 18 DME and hold.	
Simultaneous approach authorized. # RVR 1800 authorized with use of FD or AP or HUD to DA.				
ATIS 125.8	COLUMBUS APP CON 134.45 323.15	DAYTON TOWER 119.9 257.7	GND CON 121.9	CLNC DEL 121.75



ELEV 1009	D	TDZE 1007
-----------	----------	-----------



3000		DQN R-180		MIMMS DQN [18]		VGSI and ILS glidepath not coincident (VGSI Angle 3.00/TCH 54).		JAVDO INT I-EKG [12.2]	
*LOC only.		*I-EKG [2.6]		2600		241°		2800	
								GS 3.00°	
								TCH 50	
								1.2 NM, 3.7 NM, 6 NM	



CATEGORY	A	B	C	D	
S-ILS 24L #	1207/24		200 (200-½)		
S-LOC 24L	1440/24 433 (500-½)		1440/40 433 (500-¾)		
CIRCLING	1580-1 571 (600-1)		1580-1½ 571 (600-1½)		
			1640-2 631 (700-2)		
FAF to MAP 4.9 NM					
Knots	60	90	120	150	180
Min:Sec	4:54	3:16	2:27	1:58	1:38