

# RNAV (GPS) RWY 5L

APCH CRS	Rwy Idg	12,600
053°	TDZE	803
	Arprt Elev	823

-(USAF)

WRIGHT PATTERSON AFB (KFFO)

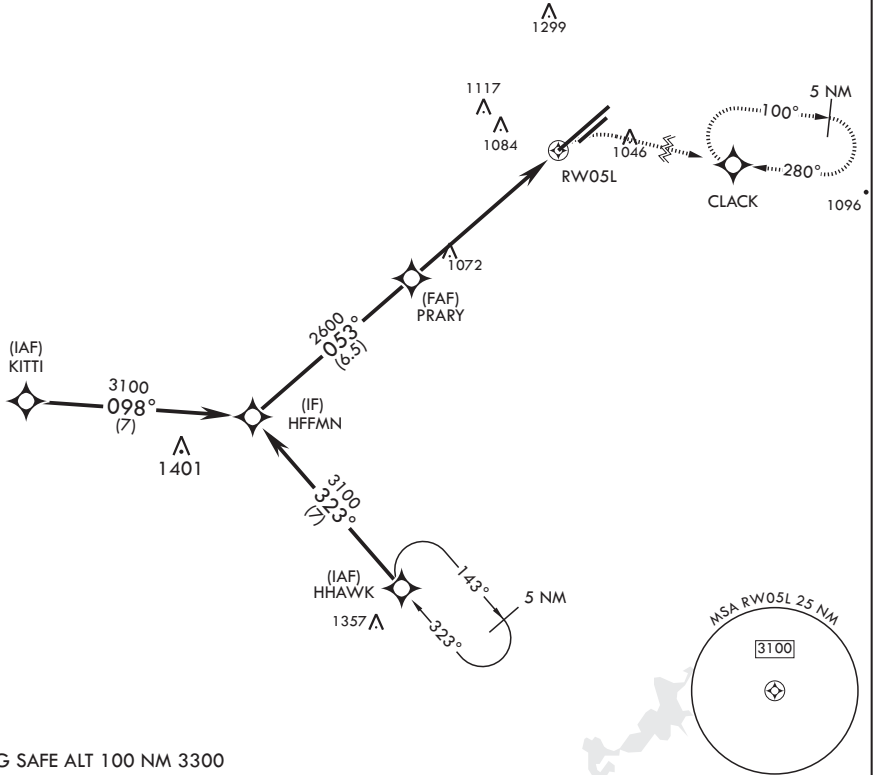
**▼** \* When ALS inop increase CAT AB RVR to 55, vis to 1 mile; CAT CD vis to 1 5/8 miles.  
 \*\* When Rwy 23R VGSI inop, circling to Rwy 23R NA at night.



**MISSED APPROACH:** Turn right climb to 3100 direct CLACK WPT and hold.

ATIS 124.475 269.9	COLUMBUS APP CON/DEP CON 118.85 269.275	PATTERSON TOWER 126.9 281.45	GND CON 121.8 335.8
-----------------------	--	---------------------------------	------------------------

DME/DME RNP-0.3 NA



EMERG SAFE ALT 100 NM 3300

HFFMN 3100	VGSI and descent angles not coincident (VGSI angle 3.00/TCH 51).	3100	CLACK	ELEV 823	TDZE 803
CATEGORY	A	B	C	D	
LNAV MDA*	1380/24	577 (600-½)	1380-1¼	577 (600-1¼)	
CIRCLING**	1380-1 557 (600-1)	1440-1 617 (700-1)	1560-2 737 (800-2)	1620-2½ 797 (800-2½)	HIRL Rwy 5L-23R MIRL Rwy 5R-23L

# RNAV (GPS) RWY 5L

EC-2, 11 JUL 2024 to 08 AUG 2024

EC-2, 11 JUL 2024 to 08 AUG 2024