

# METRO THREE DEPARTURE

AL-118 (FAA)

DETROIT, MICHIGAN

**TOP ALTITUDE:  
3000**

EC-1, 11 JUL 2024 to 08 AUG 2024

### TAKEOFF MINIMUMS

Rwys 7, 15, 33: Standard.

Rwy 25: Standard with a minimum climb of 210' per NM to 1000, or alternatively, with standard takeoff minimums and a normal 200' per NM climb gradient; takeoff must occur no later than 1300' prior to departure end of runway.

ATIS 124.875  
GND CON 121.85  
DETROIT CITY TOWER 121.3 257.8  
DETROIT DEP CON 134.3 284.0

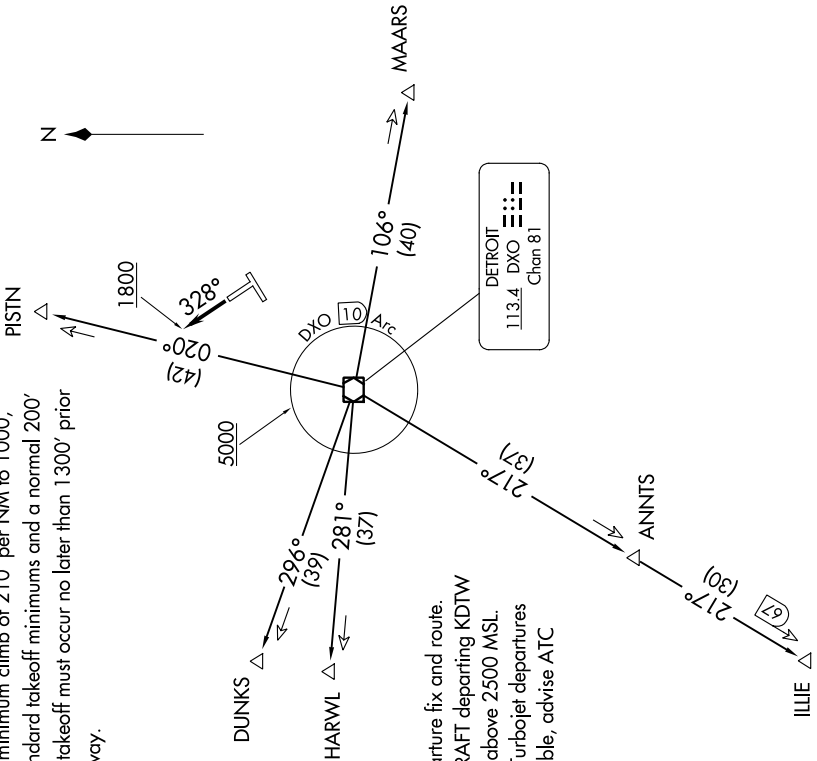
NOTE: RADAR required.  
NOTE: DME required.  
NOTE: For use by non-RNAV equipped aircraft only.

### SPECIAL INSTRUCTIONS:

When using this departure, file the appropriate depicted departure fix and route. Aircraft over HARWL must file FL220 and below. PROP AIRCRAFT departing KDTW Rwy 21L/R and 22L/R westbound, cross DXO 3.5 DME at or above 2500 MSL. Aircraft landing Cleveland (CLE) must file MAARS transition. Turbojet departures at/above 10000, maintain 280K until advised by ATC. If unable, advise ATC prior to departure.

(NARRATIVE ON FOLLOWING PAGE)

NOTE: Chart not to scale.



# METRO THREE DEPARTURE

EC-1, 11 JUL 2024 to 08 AUG 2024