

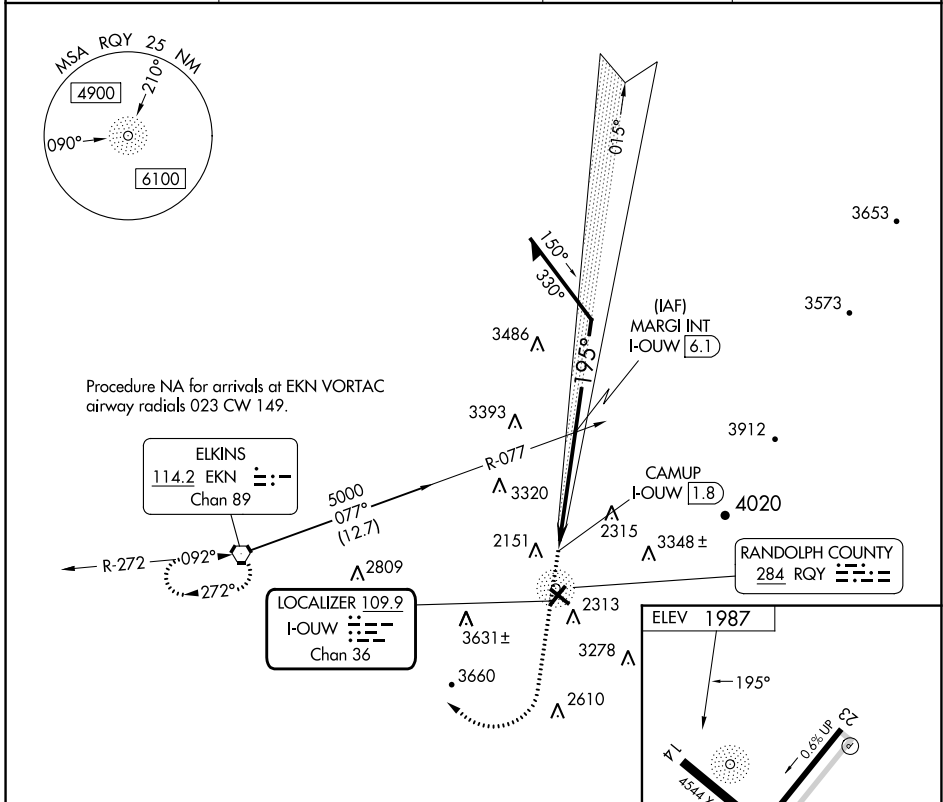
LOC/DME I-OUW <b>109.9</b> Chan <b>36</b>	APP CRS <b>195°</b>	Rwy Idg TDZE Apt Elev	<b>N/A</b> <b>N/A</b> <b>1987</b>
---	------------------------	-----------------------------	---

ELKINS/  
RANDOLPH COUNTY (JENNINGS RANDOLPH FLD) (EKN)

**LDA-C**

ADF REQUIRED	MISSED APPROACH: Climb to 5000 on RQY NDB 200° then climbing right turn to 5500 direct EKN VORTAC and hold.
<p>⚠ Circling Rwy 14, 23, 32 NA at night. When local altimeter setting not received, use Buckhannon altimeter setting and increase all MDA 100 feet.</p> <p>❄ -20°C</p>	

ASOS <b>119.275</b>	CLARKSBURG APP CON ★ <b>121.15 284.65</b>	CTAF <b>123.6</b>	<b>122.9 0</b>
------------------------	--	----------------------	----------------

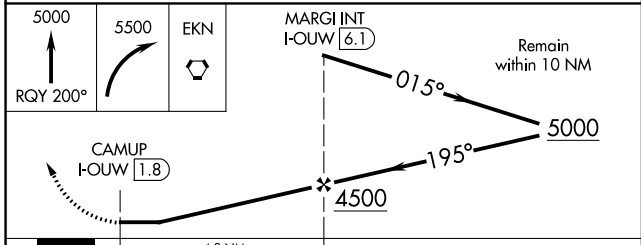
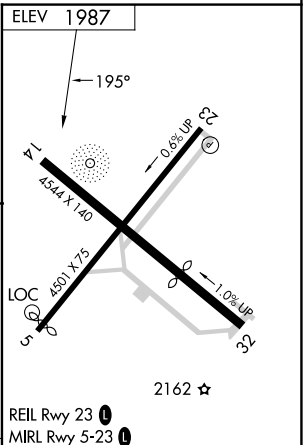


Procedure NA for arrivals at EKN VORTAC  
airway radials 023 CW 149.

**ELKINS**  
114.2 EKN  
Chan 89

**LOCALIZER 109.9**  
I-OUW  
Chan 36

**RANDOLPH COUNTY**  
284 RQY



CATEGORY	A	B	C	D	FAF to MAP 4.3 NM					
CIRCLING	3100-1¼ 1113 (1200-1¼)	3140-1½ 1153 (1200-1½)	3720-3 1733 (1800-3)	4020-3 2033 (2100-3)	Knots	60	90	120	150	180
					Min:Sec	4:18	2:52	2:09	1:43	1:26

NE-4, 11 JUL 2024 to 08 AUG 2024

NE-4, 11 JUL 2024 to 08 AUG 2024