

# RNAV (GPS) RWY 23

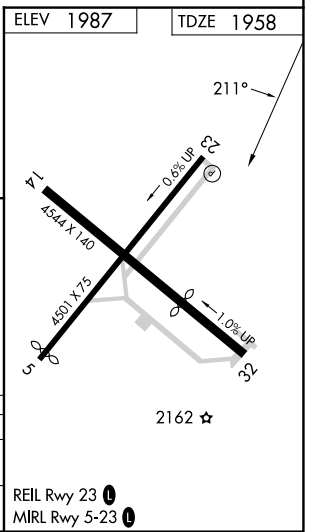
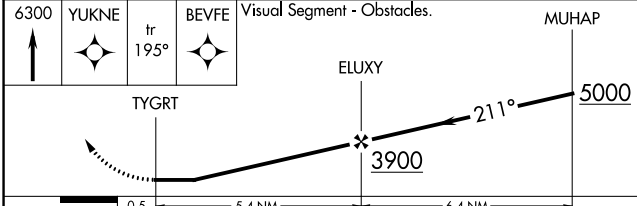
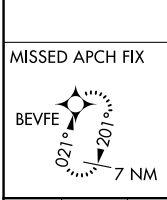
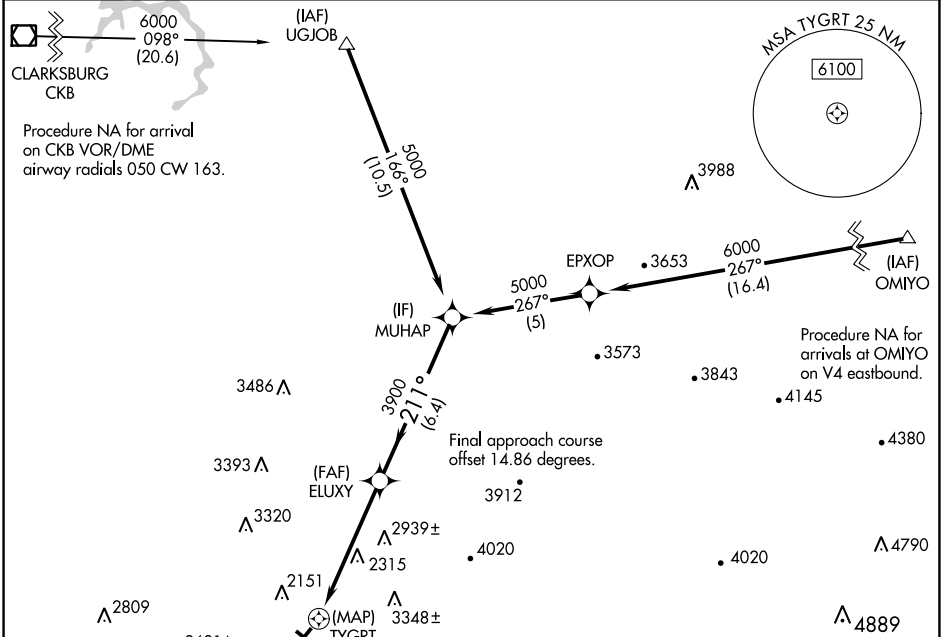
ELKINS/RANDOLPH COUNTY (JENNINGS RANDOLPH FLD) (EKN)

APP CRS	Rwy Idg	<b>4501</b>
<b>211°</b>	TDZE	<b>1958</b>
	Apt Elev	<b>1987</b>

RNP APCH. Straight-in Rwy 23 NA at night, Circling to Rwy 14, 23, 32 NA at night. When local altimeter setting not received, use Buckhannon altimeter setting and increase all MDAs 100 feet. Rwy 23 helicopter visibility reduction below 1 SM NA. -20°C

MISSED APPROACH: Climb to 6300 direct YUKNE and on track 195° to BEVFE and hold, continue climb-in hold to 6300.

ASOS <b>119.275</b>	CLARKSBURG APP CON ★ <b>121.15 284.65</b>	CTAF <b>123.6</b>	<b>122.9 0</b>
------------------------	--	----------------------	----------------



CATEGORY	A	B	C	D
LNVA MDA	3160-1¼ 1202 (1200-1¼)	3160-1½ 1202 (1200-1½)	3160-3	1202 (1200-3)
CIRCLING	3160-1¼ 1173 (1200-1¼)	3160-1½ 1173 (1200-1½)	3720-3 1733 (1800-3)	NA

# RNAV (GPS) RWY 23

NE-4, 11 JUL 2024 to 08 AUG 2024

NE-4, 11 JUL 2024 to 08 AUG 2024