


LOC/DME I-EKO <b>108.5</b> Chan 22	APP CRS <b>243°</b>	Rwy ldg TDZE <b>6418</b> <b>5064</b> Apt Elev <b>5140</b>
------------------------------------------	------------------------	--------------------------------------------------------------------

# LDA/DME RWY 24

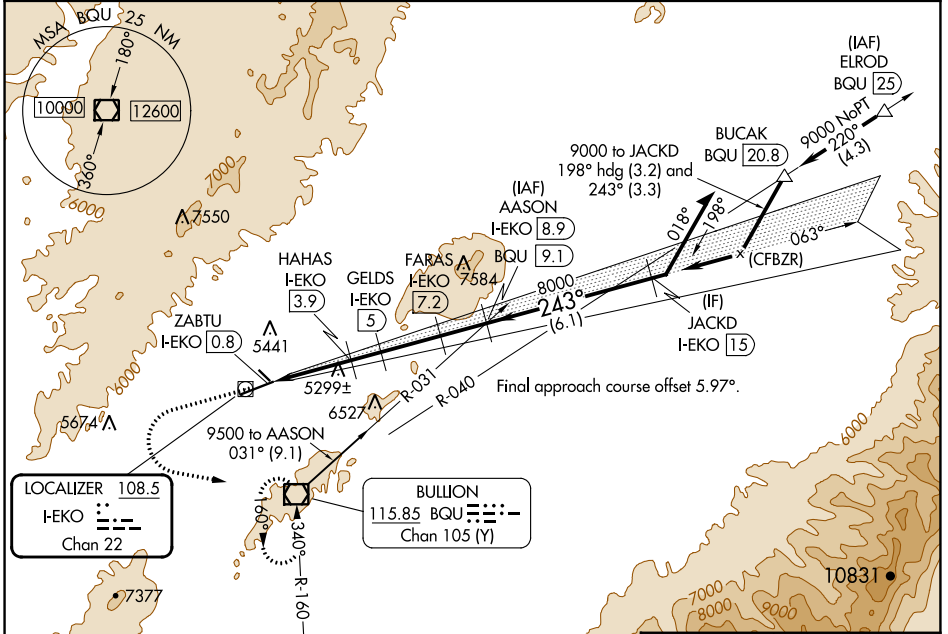
ELKO RGNL (EKO)

**⚠** Inoperative table does not apply to Cats A and B. For inop MALSR, increase S-24 Cat C and D visibility to 2 miles. Rwy 24 helicopter visibility reduction below 3/4 SM NA. Circling Rwy 24 NA at night.

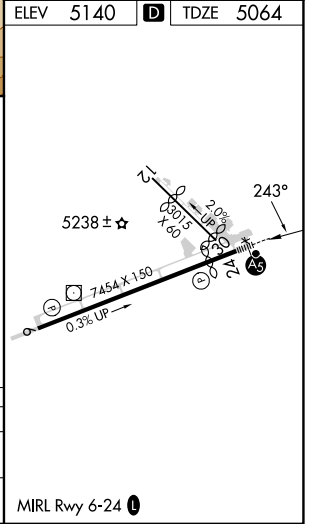
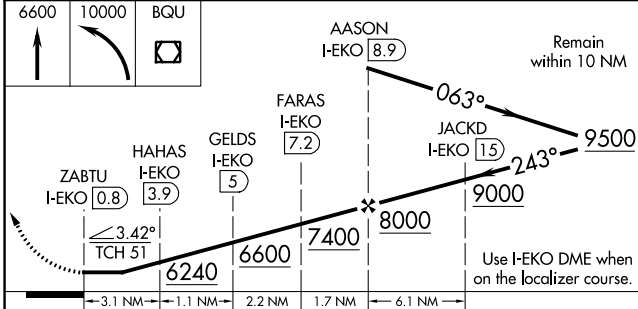
**MALSR** 

**MISSED APPROACH:** Climb to 6600 then climbing left turn to 10000 direct BQU VOR/DME and hold, continue climb-in-hold to 10000.

ASOS <b>119.275</b>	SALT LAKE CENTER <b>132.25 338.35</b>	UNICOM <b>123.0 (CTAF)</b>
------------------------	------------------------------------------	-------------------------------



ELEV 5140	TDZE 5064
-----------	-----------



CATEGORY	A	B	C	D
S-24	5800-1	736 (700-1)	5800-1 5/8	736 (700-1 1/8)
<b>C</b> CIRCLING	5920-1 780 (800-1)	6100-1 1/2 960 (1000-1 1/2)	6620-3 1480 (1500-3)	6980-3 1840 (1900-3)

SW-4, 11 JUL 2024 to 08 AUG 2024

SW-4, 11 JUL 2024 to 08 AUG 2024