

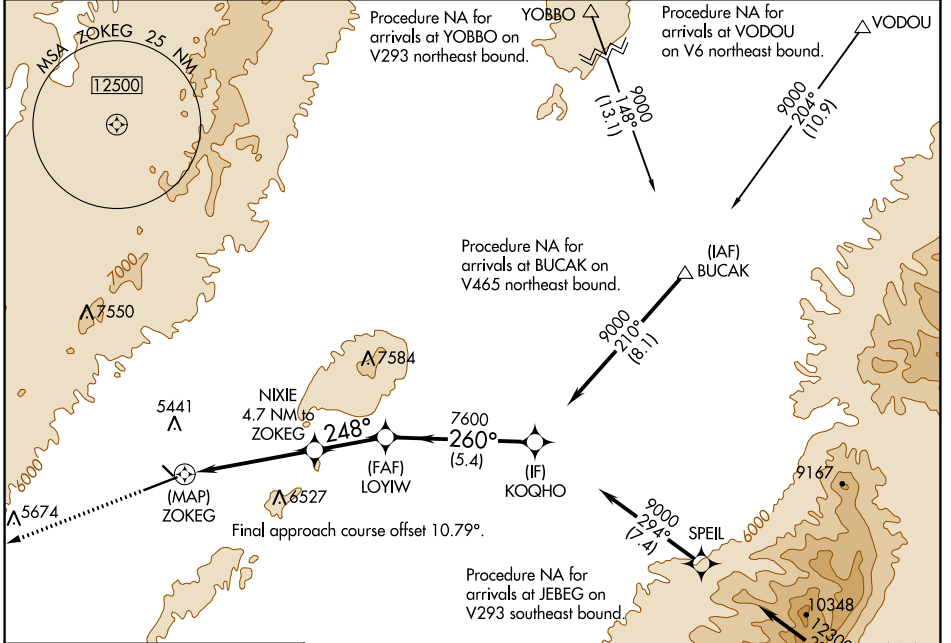
RNAV (GPS) RWY 24

ELKO RGNL (EKO)

APP CRS	Rwy Idg	6418
248°	TDZE	5064
	Apt Elev	5140

RNP APCH.	MALSRR	MISSED APPROACH: Climb to 10000 direct SAZTO and hold, continue climb-in-hold to 10000.
▼ ▲	AS	
Note table does not apply to Cats C/D. Circling Rwy 24 NA at night. Rwy 24 helicopter visibility reduction below 3/4 SM NA.		

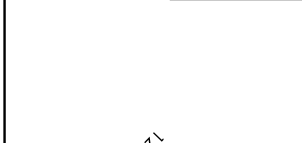
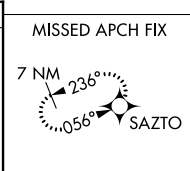
ASOS 119.275	SALT LAKE CENTER 132.25 338.35	UNICOM 123.0 (CTAF) 0
------------------------	--	---------------------------------



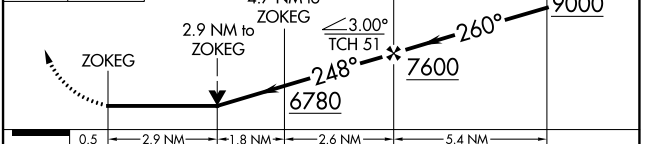
SW-4, 11 JUL 2024 to 08 AUG 2024

SW-4, 11 JUL 2024 to 08 AUG 2024

ELEV 5140	D	TDZE 5064
-----------	----------	-----------



10000	SAZTO	VGSI and descent angles not coincident (VGSI Angle 3.25/TCH 51).	KOQHO
-------	-------	--	-------



CATEGORY	A	B	C	D
LNNAV MDA	6260-3/4 1196 (1200-3/4)	6260-1 1196 (1200-1)	6260-3 1196 (1200-3)	1196 (1200-3)
C CIRCLING	6260-1 1/4 1120 (1200-1 1/4)	6260-1 1/2 1120 (1200-1 1/2)	6640-3 1500 (1500-3)	6960-3 1820 (1900-3)