

FORT BLISS, TEXAS

# ILS or LOC RWY 22

I-BIF LOC/DME <b>110.9</b> Chan <b>46</b>	APCH CRS <b>216°</b>	Rwy Idg <b>13,554</b> TDZE <b>3947</b> Arprt Elev <b>3947</b>
-------------------------------------------------	-------------------------	---------------------------------------------------------------------------

[USA]

BIGGS AAF (KBIF)

RADAR required when R-5103-A,B,C, R-5107K are active.		SSALR 	MISSED APPROACH: Climb to 4600, then climbing left turn to 9000 direct ELP VORTAC. Proceed outbound ELP R-040 to PIERS intersection and hold. Continue climb in hold to 9000.
-------------------------------------------------------	--	-----------	-------------------------------------------------------------------------------------------------------------------------------------------------------------------------------

\*Circling NA for CAT DE NW of Rwy 4.

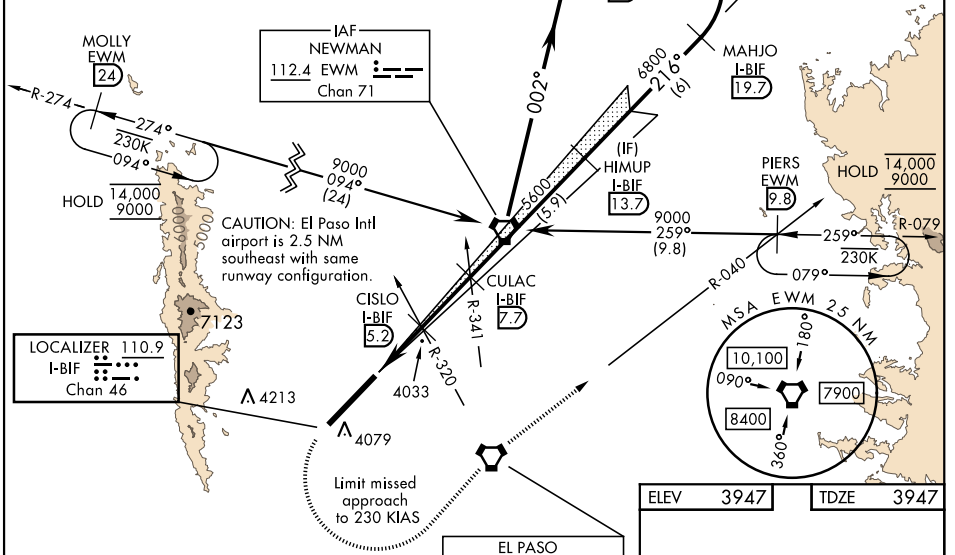
EL PASO ATIS <b>120.0 254.3</b>	EL PASO APP <b>119.15 353.5</b> (S of V16) <b>124.25 298.85</b> (N of V16)	TOWER <b>127.9 342.25</b>	GND CON <b>121.6 251.125</b>	EL PASO CLNC DEL <b>125.0 379.1</b>	ASR
------------------------------------	----------------------------------------------------------------------------------	------------------------------	---------------------------------	----------------------------------------	-----

Arrivals expect RADAR vectors to final when restricted areas are active.

Procedure NA via V-94-611, T317 westbound without holding at MOLLY. ATC clearance required.

Procedure NA via V-560 eastbound without holding at PIERS. ATC clearance required.

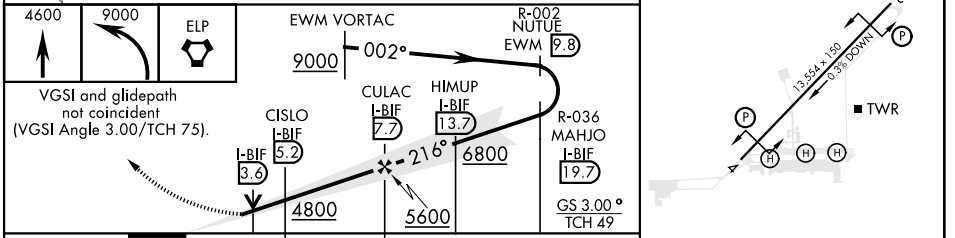
Inop table does not apply.



SC-3, 11 JUL 2024 to 08 AUG 2024

SC-3, 11 JUL 2024 to 08 AUG 2024

EMERG SAFE ALT 100 NM 13,100



	ELEV 3947		TDZE 3947		
	EL PASO 115.2 ELP Chan 99				
CATEGORY	A	B	C	D	E
S-ILS 22	4147- $\frac{3}{4}$		200	(200- $\frac{3}{4}$ )	
S-LOC 22	4300-1		353	(400-1)	
CIRCLING*	4380-1	4400-1	4560-1 $\frac{3}{4}$	4560-2	4560-2 $\frac{1}{2}$
	433	453	613	613	613
	(500-1)	(500-1)	(700-1 $\frac{3}{4}$ )	(700-2)	(700-2 $\frac{1}{2}$ )
HIRL Rwy 04-22					
REIL Rwy 04, 22					
FAF to MAP 5.0 NM					
Knots	60	90	120	150	180
Min:Sec	5:00	3:20	2:30	2:00	1:40

FORT BLISS, TEXAS

31° 51' N - 106° 23' W

BIGGS AAF (KBIF)

Orig 25JAN24

# ILS or LOC RWY 22