

FORT BLISS, TEXAS

VOR or TACAN RWY 22

BIGGS AAF (KBIF)

EWM VORTAC 112.4 Chan 71	APCH CRS 210°	Rwy Idg 13,554 TDZE 3947 Arprt Elev 3947
----------------------------------------------	-------------------------	---------------------------------------------------------------------

[USA]

<p>* Circling CAT DE not authorized W of Rwy 4-22.</p>		SSALR 	<p>MISSED APPROACH: Climbing left turn to 8000 direct EWM VORTAC and hold, continue climb-in-hold to 8000. (TACAN only aircraft continue on EWM R-079 to PIERS INT/ EWM 9.8 DME and hold, continue climb-in-hold to 9000).</p>		
ATIS 120.0 254.3	EL PASO APP CON S of V16 119.15 353.5 N of V16 124.25 298.85	TOWER 127.9 342.25	GND CON 121.6 251.125	EL PASO CLNC DEL 125.0 379.1	ASR

Use El Paso Intl altimeter setting.

Inop table does not apply.

Arrivals expect RADAR vectors to final when restricted areas are active.

TACAN only equipped aft:

Final apch from holding pattern not authorized.

RADAR vectors required to final approach course.

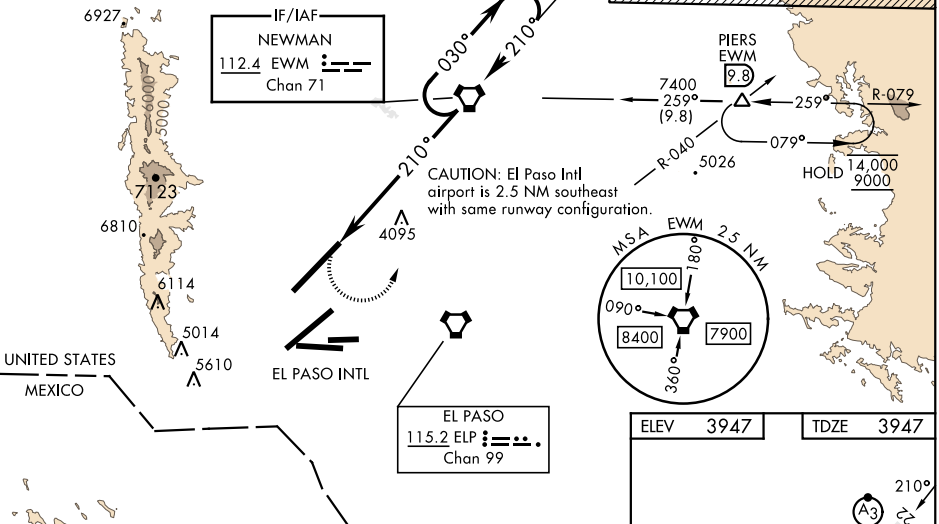
Procedure not authorized via V-560

eastbound without holding at PIERS.

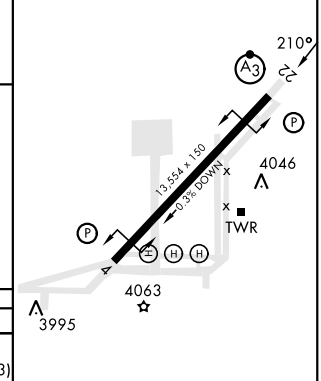
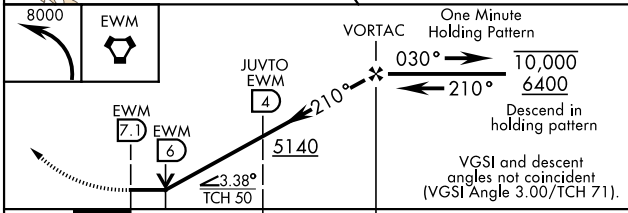
ATC clearance required.

Knots	60	120	180	240	300	360
V/V(fpm)	332	664	996	1328	1660	1992

Min climb of 332 ft/NM to 6400 - Controlling Obstacle Unk
Climb grad does not apply to the TACAN only missed apch.



ELEV 3947	TDZE 3947
-----------	-----------



CATEGORY	A	B	C	D	E
S-22	5140-1¼	1193 (1200-1¼)			5140-3 1193(1200-3)
CIRCLING *	5140-1¼ 1193 (1200-1¼)	5140-1½ 1193 (1200-1½)	5140-3	1193	(1200-3)
JUVTO FIX MINIMUMS					
S-22	4380-1	433 (500-1)	4380-1¼	433	(500-1¼)

HIRL Rwy 4-22 REIL Rwy 4 and 22					
FAF to MAP 7.1 NM					
Knots	60	90	120	150	180
Min:Sec	7:06	4:44	3:33	2:50	2:22

FORT BLISS, TEXAS

31° 51' N - 106° 23' W

BIGGS AAF (KBIF)

Amdt 9 05OCT23

VOR or TACAN RWY 22

SC-3, 11 JUL 2024 to 08 AUG 2024

SC-3, 11 JUL 2024 to 08 AUG 2024