

ENID, OKLAHOMA

VOR/DME or TACAN RWY 17C

VORTAC END 115.4 Chan 101	APCH CRS 182°	Rwy Idg 9217 TDZE 1277 Arprt Elev 1307
---	-------------------------	---

AL-135 [USAF]

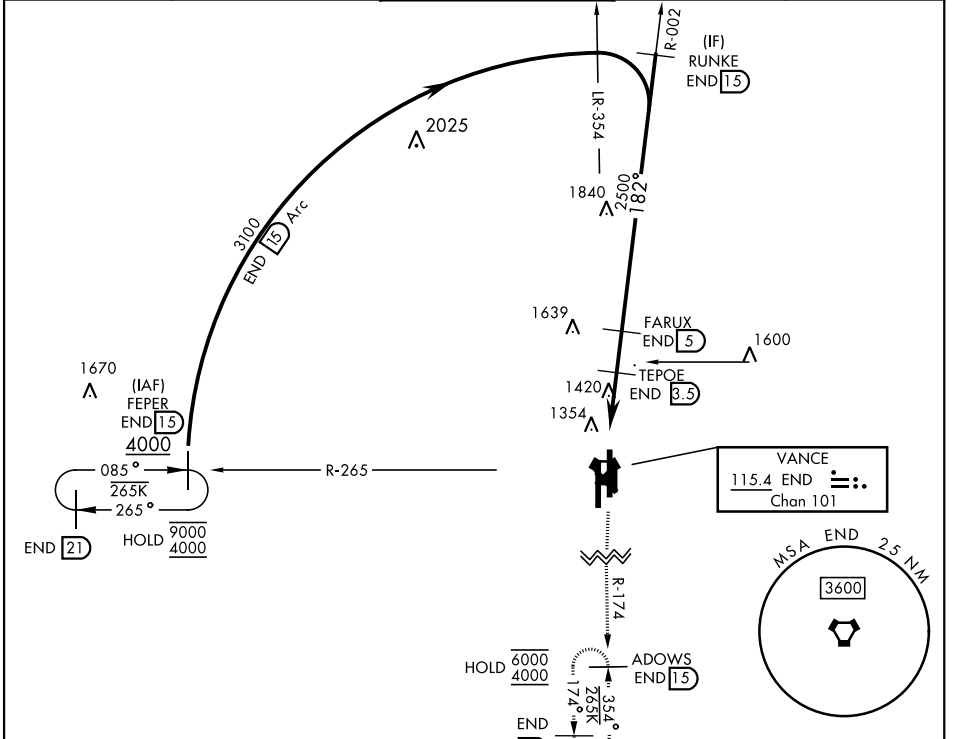
VANCE AFB (KEND)

▼ * When ALS inop, increase CAT AB RVR to 55 and vis to 1 mile, CAT CDE RVR to 60 and vis to 1/8 miles.

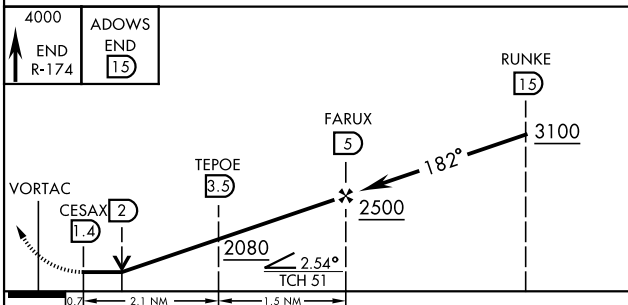
SALSF (A2)

MISSED APPROACH: Climb to 4000, intercept END VORTAC R-174 to ADOWS and hold.

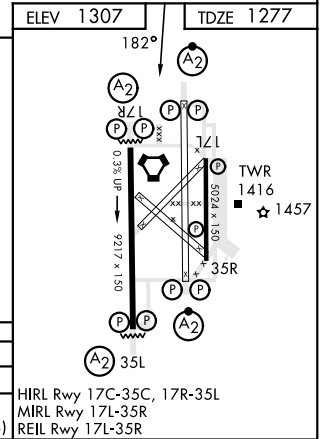
ATIS ★ 115.4 263.15	APP CON 125.45 388.2 EAST 126.75 346.325 WEST	TOWER ★ 124.05 259.1	GND CON 121.675 289.4	CLNC DEL 225.4
-------------------------------	---	--------------------------------	---------------------------------	--------------------------



EMERG SAFE ALT 100 NM 4500



4000 END R-174	ADOWS END 15	RUNKE 15			
VORTAC	CESAX 2 (1.4)	TEPOE 3.5 (2080)	FARUX 5 (2500)	3100	
0.7 NM		2.1 NM		1.5 NM	
2.54°		182°		TCH 51	
CATEGORY	A	B	C	D	E
S-17C *	1680/40	403 (400-34)	1680/50	403 (400-1)	
CIRCLING	1760-1	453 (500-1)	1800-1½ (493 (500-1½))	1900-2 (593 (600-2))	2300-3 (993 (1000-3))



ENID, OKLAHOMA

36° 20'N-97° 55'W

VANCE AFB (KEND)

Amtd 5 24FEB22

VOR/DME or TACAN RWY 17C

SC-1, 11 JUL 2024 to 08 AUG 2024

SC-1, 11 JUL 2024 to 08 AUG 2024