

WAAS CH 97413 W35A	APP CRS 355°	Rwy Idg 8613 TDZE 1147 Apt Elev 1167
--	------------------------	---

RNAV (GPS) RWY 35

ENID WOODRING RGNL (WDG)

RNP APCH-GPS.

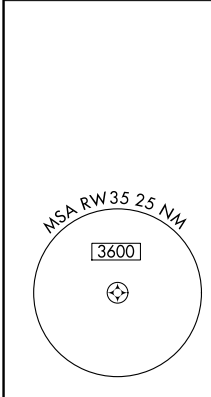
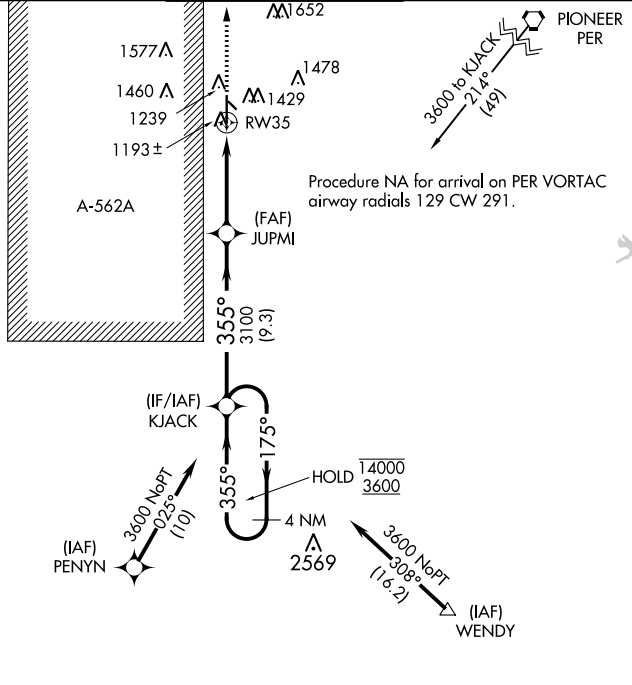
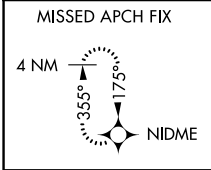
⚠ Circling Rwy 13 NA at night. For uncompensated Baro-VNAV systems, LNAV/VNAV NA below -17°C or above 54°C. For inop ALS, increase LPV Cat E visibility to ¾ SM, increase LNAV/VNAV all Cats visibility to ¾ SM, increase LNAV Cat E visibility to 1¼ SM.

MALSR

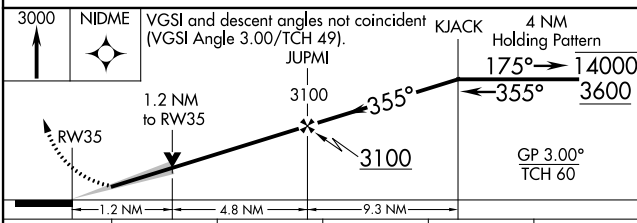
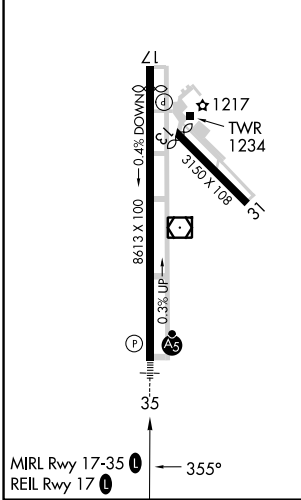


MISSED APPROACH: Climb to 3000 direct NIDME and hold.

AWOS-3PT 123.725	VANCE APP CON ★ 121.3 346.325	WOODRING TOWER ★ 118.9 (CTAF) 0 257.95	GND CON 121.925
----------------------------	---	--	---------------------------



ELEV 1167	TDZE 1147
-----------	-----------



CATEGORY	A	B	C	D	E
LPV DA	1347-½		200 (200-½)		
LNAV/VNAV DA	1397-½		250 (300-½)		
LNAV MDA	1580-½ 433 (500-½)		1580-¾ 433 (500-¾)		
C CIRCLING	1760-1 593 (600-1)		1820-1¾ 653 (700-1¾)	1880-2¼ 713 (800-2¼)	2000-3 833 (900-3)

SC-1, 11 JUL 2024 to 08 AUG 2024

SC-1, 11 JUL 2024 to 08 AUG 2024