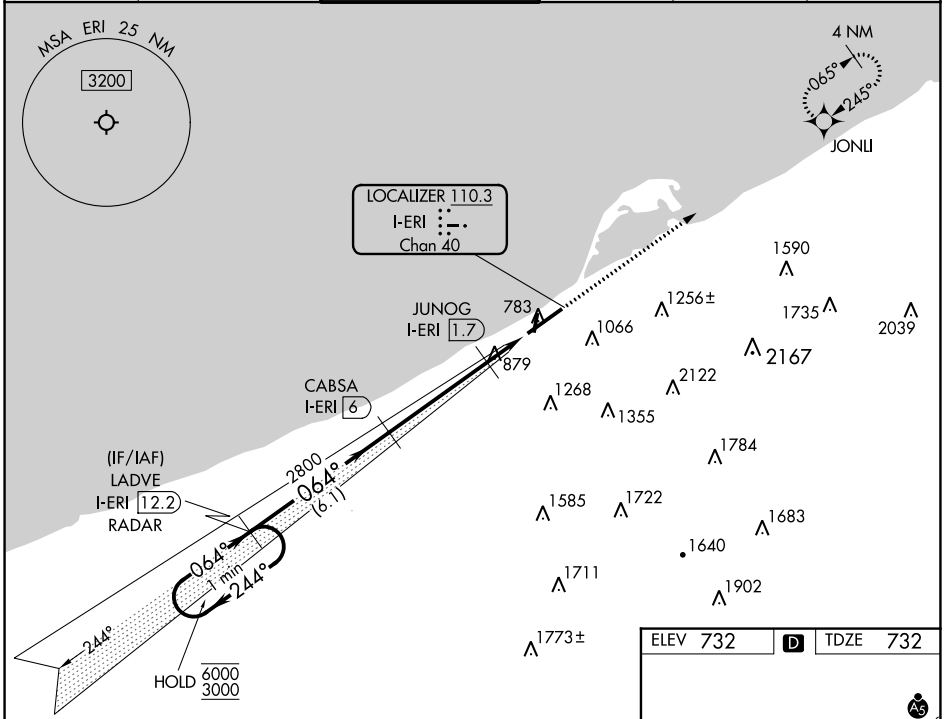


LOC/DME I-ERI 110.3 Chan 40	APP CRS 064°	Rwy ldg 7501 TDZE 732 Apt Elev 732
--	------------------------	---

ILS or LOC RWY 6

ERIE INTL/TOM RIDGE FLD (ERI)

DME required. RADAR required for procedure entry. RNP APCH - GPS.					MALSR 	MISSED APPROACH: Climb to 3200 direct JONLU and hold.
⚠ Circling to Rwy 2, 20 NA at night. Circling NA southeast of Rwy 6-24. Autopilot coupled approach NA below 1580. For inop ALS, increase S-LOC 6 Cats C and D visibility to RVR 6000.						
ATIS 120.35	BUFFALO APP CON* 121.0 257.8	ERIE TOWER* 118.1 (CTAF) 0 257.8		GND CON 121.9	CLNC DEL 126.8	UNICOM 122.95



NE-4, 11 JUL 2024 to 08 AUG 2024

NE-4, 11 JUL 2024 to 08 AUG 2024

