

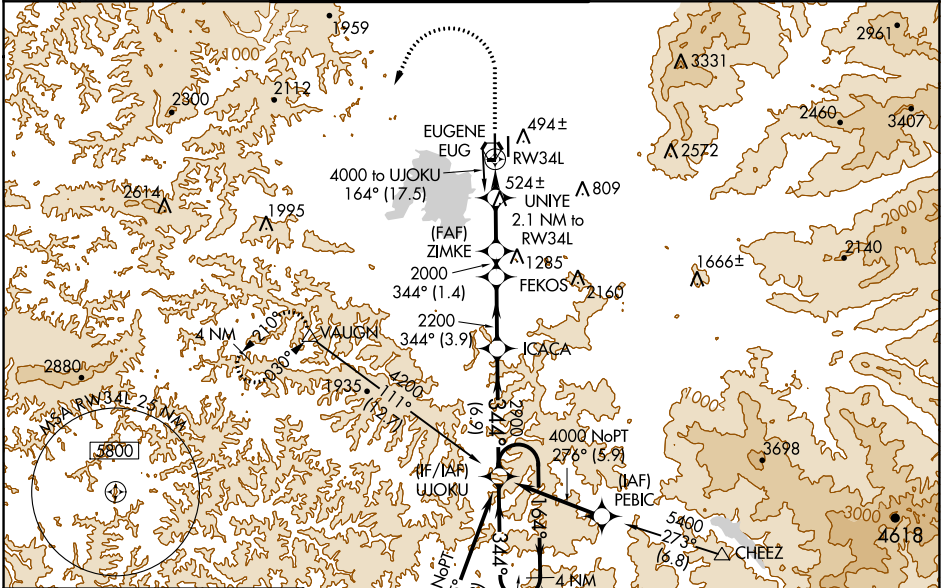
WAAS CH <b>45600</b> W <b>34A</b>	APP CRS <b>344°</b>	Rwy Idg TDZE Apt Elev	<b>8009</b> <b>368</b> <b>374</b>
---	------------------------	-----------------------------	---

# RNAV (GPS) Y RWY 34L

MAHLON SWEET FLD (EUG)

RNP APCH.	<p>Simultaneous approach authorized. LNAV procedure NA during simultaneous operations. Use of FD or AP providing RNAV track guidance required during simultaneous operations. For uncompensated Baro-VNAV systems, LNAV/VNAV NA below -10°C or above 54°C. For inop ALS increase LNAV/VNAV visibility Cats A-B to RVR 4500. Inop table does not apply to LPV minimums.</p>	<p>ODALS</p>	<p>MISSED APPROACH: Climb to 1500, then climbing left turn to 4000 direct VAUGHN and hold.</p>
-----------	--	--------------	--

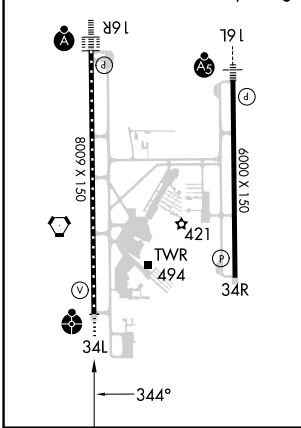
ATIS <b>125.225</b>	CASCADE APP CON★ <b>119.6 348.7</b>	EUGENE TOWER★ <b>118.9</b> (CTAF) <b>0 371.9</b> (Rwy 16R/34L) <b>124.15 371.9</b> (Rwy 16L/34R)	GND CON <b>121.7 269.5</b>	CLNC DEL <b>121.7 269.5</b>	UNICOM <b>122.95</b>
------------------------	--	--	-------------------------------	--------------------------------	-------------------------



NW-1, 11 JUL 2024 to 08 AUG 2024

NW-1, 11 JUL 2024 to 08 AUG 2024

ELEV 374	D	TDZE 368
HIRL Rwy 16L-34R and 16R-34L		
TDZ/CL Rwy 16R		
REIL Rwy 34R		



1500	4000	VAUGHN	△	4 NM Holding Pattern	
*LNAV only		UNIYE 2.1 NM to RW34L	FEKOS	ICACA	
*1.1 NM to RW34L		ZIMKE 2000	2200	UJOKU 4 NM Holding Pattern	
1500	4000	VAUGHN	△	4 NM Holding Pattern	
164° → 6000		← 344° 4000			
GP 3.00°		TCH 53			
1.1 NM	1 NM	2.9 NM	1.4 NM	3.9 NM	6.9 NM
CATEGORY	A	B	C	D	
LPV DA	568/40		200 (200-3/4)		
LNAV/VNAV DA	657/40		289 (300-3/4)		
LNAV MDA	760/40		392 (400-3/4)		760/50 392 (400-1)
CIRCLING	820-1 446 (500-1)	840-1 466 (500-1)	1000-1 3/4 626 (700-1 3/4)	1140-2 1/2 766 (800-2 1/2)	