

WRIGHTSTOWN, NEW JERSEY

RNAV (RNP) Z RWY 24

APCH CRS	Rwy Idg	10,014
238°	TDZE	117
	Arpt Elev	141

AL-150 (USAF)
 MC GUIRE FIELD (JOINT BASE MC GUIRE DIX LAKEHURST) (KWRI)

RNP AR APCH. From EXMEN and GRACE: RF.

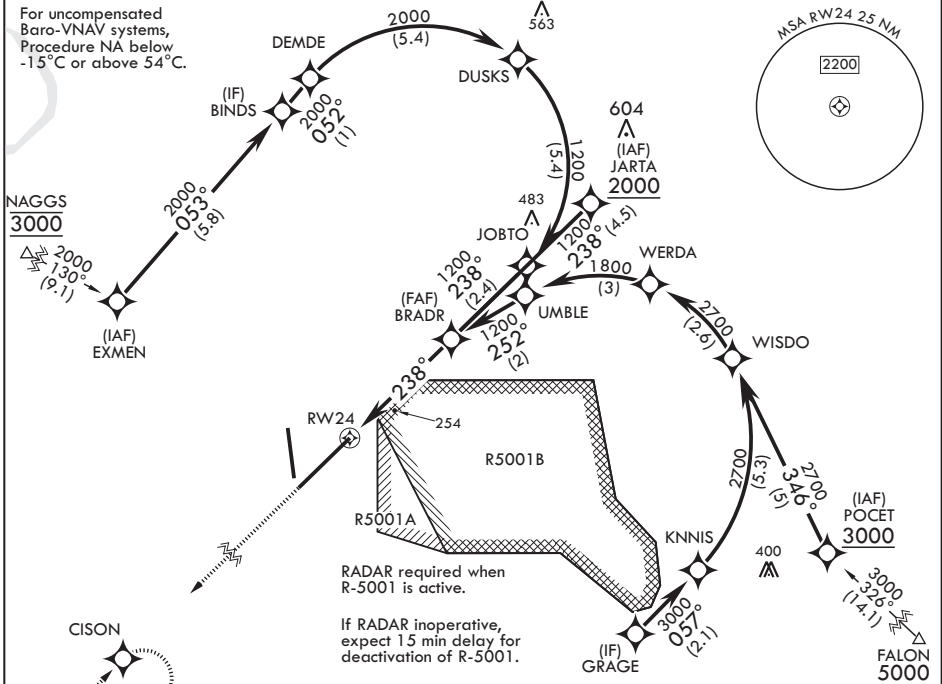
▲ * When ALS inop increase RVR to 50, vis to 1 mile.
 ** When ALS inop increase vis to 1 3/8 miles.



MISSED APPROACH: Climb to 2100 on track 238° to CISON and hold, continue to climb-in-hold to 2100.

ATIS	MC GUIRE APP CON/DEP CON	TOWER	GND CON	CLNC DEL	PAR
110.6 270.1	126.475 363.8	118.65 255.6	121.8 275.8	135.2 335.8	

For uncompensated Baro-VNAV systems, Procedure NA below -15°C or above 54°C.

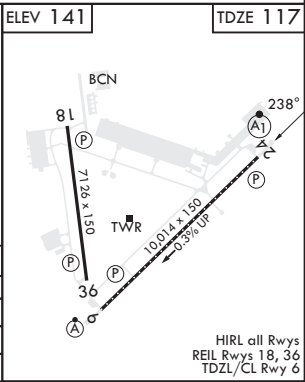
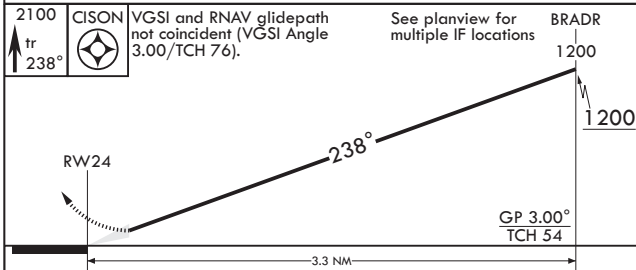


AUTHORIZATION REQUIRED

When R-5001 is active with aerial gunnery, entry from GRACE and POCKET NA.

RADAR required when R-5001 is active.
 If RADAR inoperative, expect 15 min delay for deactivation of R-5001.

EMERG SAFE ALT 100 NM 5100



CATEGORY	A	B	C	D
RNP 0.10 DA*	449/26	332	(400-½)	
RNP 0.13 DA*	456/26	339	(400-½)	
RNP 0.30 DA**	593/50	476	(500-1)	

WRIGHTSTOWN, NEW JERSEY

MC GUIRE FIELD (JOINT BASE MC GUIRE DIX LAKEHURST) (KWRI)

Orig 20APR23

40°01'N - 74°36'W

RNAV (RNP) Z RWY 24

NE-2, 11 JUL 2024 to 08 AUG 2024

NE-2, 11 JUL 2024 to 08 AUG 2024

HIRL all Rwys
 REIL Rwys 18, 36
 TDZL/CL Rwy 6