

# RNAV (GPS) RWY 15

|          |            |      |
|----------|------------|------|
| APCH CRS | Rwy Idg    | 4853 |
| 151°     | TDZE       | 754  |
|          | Arprt Elev | 754  |

AL-151 [USA]

GODMAN AAF (KFTK)

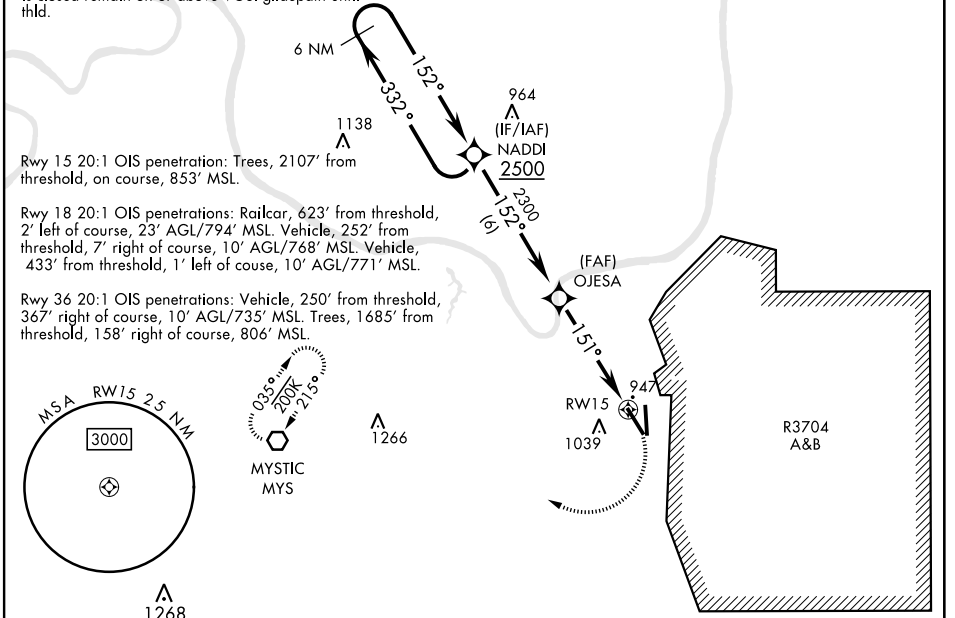
RNP APCH - GPS

▼ \*Straight-in minimums NA at night. Helicopter visibility reduction below 1 mile NA.  
 \*\* Circling not authorized E of Rwy 18-36. When circling to Rwy 36 at night, operational VGSI required, remain on or above VGSI glidepath until threshold.

MISSED APPROACH: Climbing right turn to 3000 direct MYS VOR and hold.

|                      |  |                                  |                               |
|----------------------|--|----------------------------------|-------------------------------|
| ATIS<br><b>109.6</b> | LOUISVILLE APP CON<br><b>132.075 327.0</b> | TOWER★<br><b>133.35</b> (CTAF) 0 | GND CON<br><b>121.9 239.3</b> |
|----------------------|--|----------------------------------|-------------------------------|

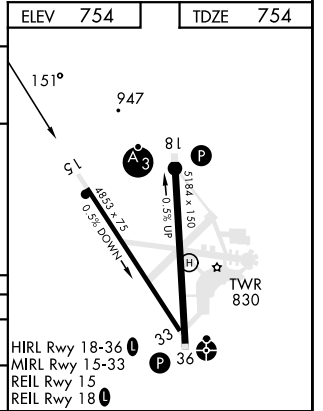
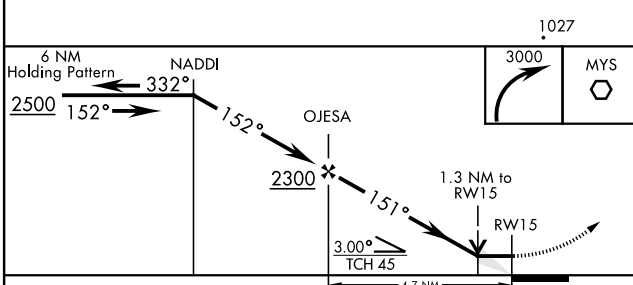
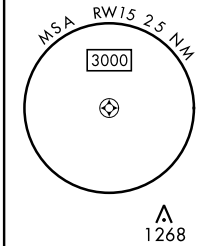
Circling to Rwy 18 at night: Operational VGSI required when train is on the track north and east of Rwy 18 (control tower will advise when train is on track) or when tower is closed. When train is on track or tower is closed remain on or above VGSI glidepath until thld.



Rwy 15 20:1 OIS penetration: Trees, 2107' from threshold, on course, 853' MSL.

Rwy 18 20:1 OIS penetrations: Railcar, 623' from threshold, 2' left of course, 23' AGL/794' MSL. Vehicle, 252' from threshold, 7' right of course, 10' AGL/768' MSL. Vehicle, 433' from threshold, 1' left of course, 10' AGL/771' MSL.

Rwy 36 20:1 OIS penetrations: Vehicle, 250' from threshold, 367' right of course, 10' AGL/735' MSL. Trees, 1685' from threshold, 158' right of course, 806' MSL.



| CATEGORY   | A      | B           | C                    | D                          |
|------------|--------|-------------|----------------------|----------------------------|
| LNNAV MDA* | 1260-1 | 506 (600-1) | 1260-1 $\frac{3}{8}$ | 506 (600-1 $\frac{3}{8}$ ) |
| CIRCLING** | 1340-1 | 586 (600-1) | 1340-1 $\frac{1}{2}$ | 586 (600-2)                |

# RNAV (GPS) RWY 15

SE-1, 11 JUL 2024 to 08 AUG 2024

SE-1, 11 JUL 2024 to 08 AUG 2024