

RNAV (GPS) RWY 36

APCH CRS	Rwy Idg	5184
015°	TDZE	740
	Arprt Elev	754

AL-151 [USA]

GODMAN AAF (KF TK)

RNP APCH - GPS

ODALS

▼ * Straight-in Rwy 36 at night, operational VGSI required, remain on or above VGSI glidepath until threshold. When ALS inop, increase CAT CD vis to 1½ miles. Helicopter visibility reduction below 1 mile NA.

MISSED APPROACH: Climbing left turn to 2500 direct HONAL and hold.

ATIS
109.6

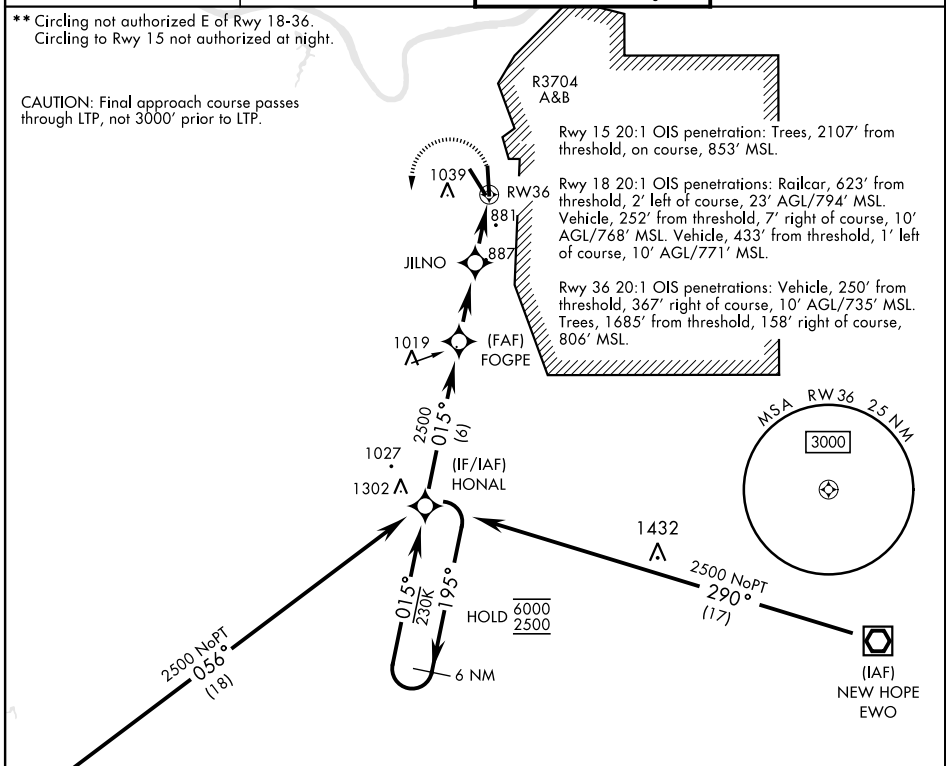
LOUISVILLE APP CON
132.075 327.0

TOWER ★
133.35 (CTAF) 0

GND CON
121.9 239.3

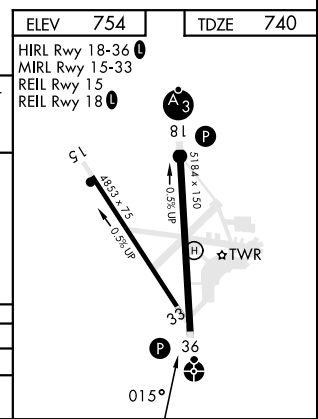
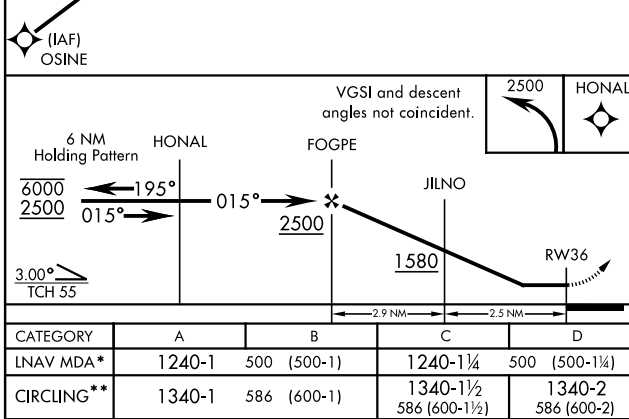
** Circling not authorized E of Rwy 18-36.
Circling to Rwy 15 not authorized at night.

CAUTION: Final approach course passes through LTP, not 3000' prior to LTP.



SE-1, 11 JUL 2024 to 08 AUG 2024

SE-1, 11 JUL 2024 to 08 AUG 2024



RNAV (GPS) RWY 36