

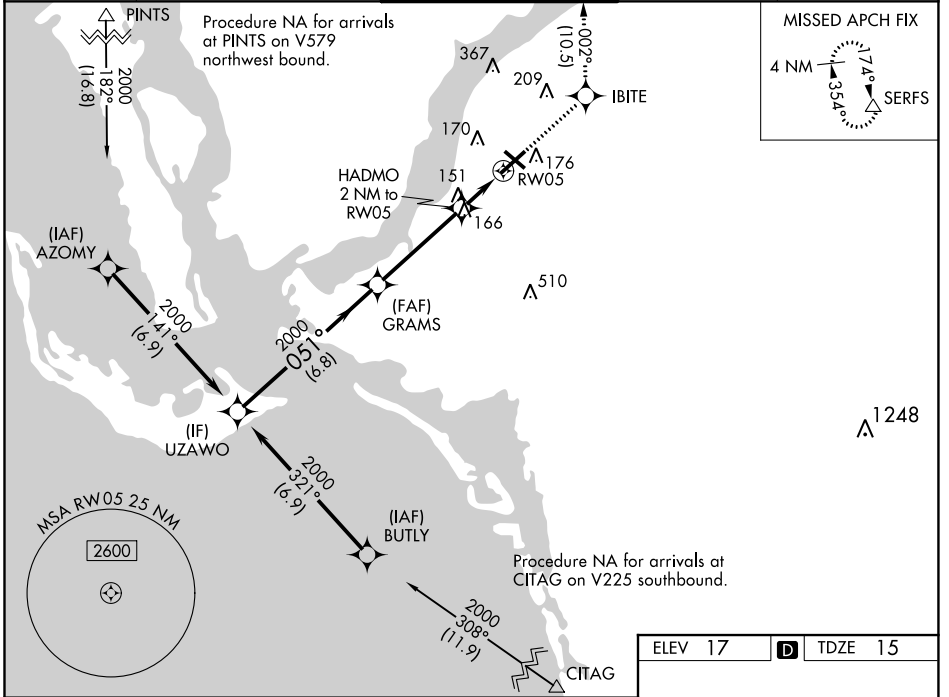
WAAS CH <b>72624</b> <b>W05A</b>	APP CRS <b>051°</b>	Rwy Idg <b>5548</b> TDZE <b>15</b> Apt Elev <b>17</b>
--	------------------------	---

# RNAV (GPS) RWY 5

PAGE FLD (FMY)

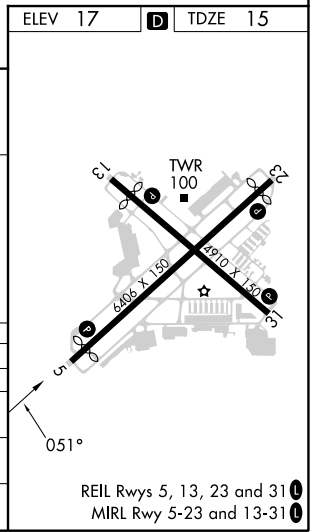
RNP APCH	<p>When Circling to Rwy 31 at night, operational VGSI required, remain on or above VGSI glidepath until threshold. Rwy 5 helicopter visibility reduction below 3/4 SM NA. For uncompensated Baro-VNAV systems, LNAV/VNAV NA below 4°C or above 54°C.</p>	MISSED APPROACH: Climb to 2600 direct IBITE and on track 002° to SERFS and hold.
----------	--	--

ATIS <b>123.725</b>	FORT MYERS APP CON ★ <b>125.15 306.2</b> (Rwys 5, 13) <b>126.8 306.2</b> (Rwys 23, 31)	PAGE TOWER ★ <b>119.0</b> (CTAF) <b>306.95</b>	GND CON <b>121.7</b>	CLNC DEL <b>121.7</b>
------------------------	--	---	-------------------------	--------------------------



SE-3, 11 JUL 2024 to 08 AUG 2024

SE-3, 11 JUL 2024 to 08 AUG 2024



	2600	IBITE	tr 002°	SERFS
UZAWO	GRAMS	HADMO 2 NM to RW05	*LNAV only.	
2000	2000	*1.1 NM to RW05	RW05	
GP 3.00°	051°	*700		
TCH 53	6.8 NM	4.1 NM	0.9 NM	1.1 NM
CATEGORY	A	B	C	D
LPV DA	265-3/4		250 (300-3/4)	
LNAV/VNAV DA	317-7/8		302 (300-7/8)	
LNAV MDA	420-1	405 (500-1)	420-1 1/8	405 (500-1 1/8)
CIRCLING	540-1	523 (600-1)	600-1 1/2	680-2
			583 (600-1/2)	663 (700-2)