

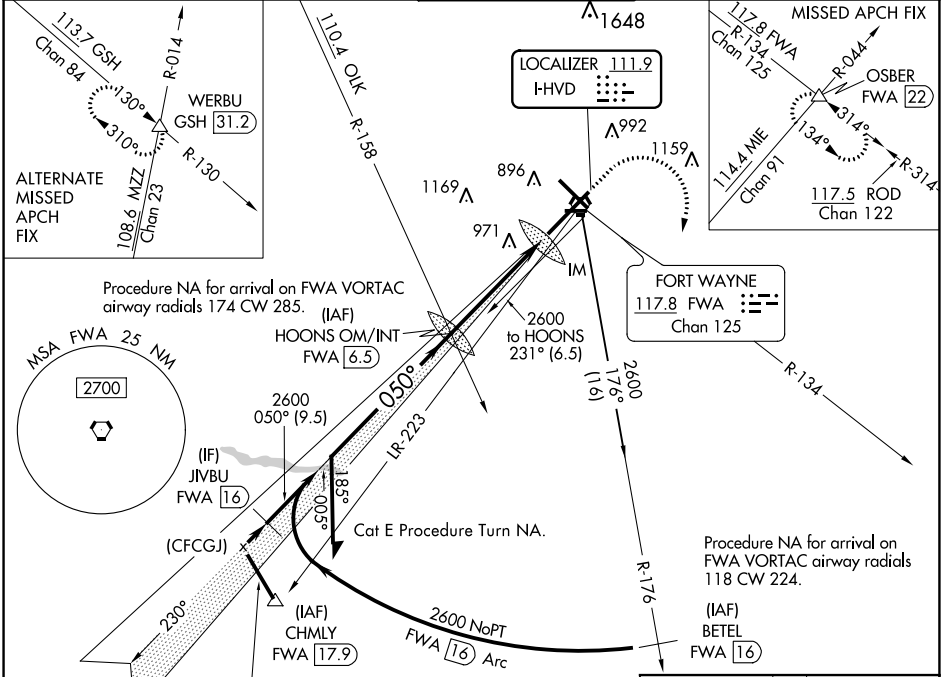
LOC I-HVD 111.9	APP CRS 050°	Rwy ldg 11981
		TDZE 815
		Apt Elev 815

ILS or LOC RWY 5

FORT WAYNE INTL (FWA)

<p>▼ For inop ALS, increase S-ILS 5 Cat E visibility to RVR 4000 and S-LOC 5 Cat C/D/E visibility to 1½ SM.</p> <p>▲ ASR</p>	<p>ALSF-2</p> <p>MISSED APPROACH: Climb to 1300 then climbing right turn to 3000 on FWA R-134 to OSBER INT/FWA 22 DME and hold.</p>
--	--

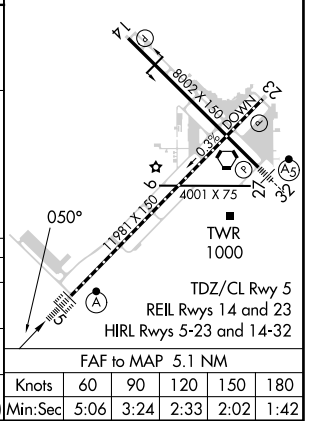
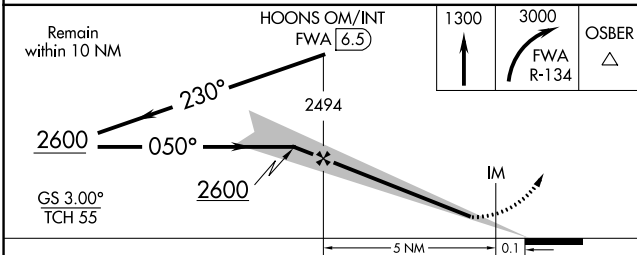
<p>ATIS 121.25 360.825</p>	<p>FORT WAYNE APP CON 127.2 284.6</p>	<p>FORT WAYNE TOWER 119.1 269.325</p>	<p>GND CON 121.9 348.6</p>	<p>CLNC DEL 124.75</p>
---------------------------------------	--	--	---------------------------------------	-----------------------------------



EC-2, 11 JUL 2024 to 08 AUG 2024

EC-2, 11 JUL 2024 to 08 AUG 2024

ELEV	815	TDZE	815
------	-----	------	-----



CATEGORY	A	B	C	D	E
S-ILS 5	1015/18		200 (200-½)		1015/24 200 (200-½)
S-LOC 5	1300/24	485 (500-½)	1300/50		485 (500-1)
C CIRCLING	1300-1	485 (500-1)	1420-1¾ 605 (700-1¾)	1520-2¼ 705 (800-2¼)	1520-2½ 705 (800-2½)
FAF to MAP 5.1 NM					
Knots	60	90	120	150	180
Min:Sec	5:06	3:24	2:33	2:02	1:42