

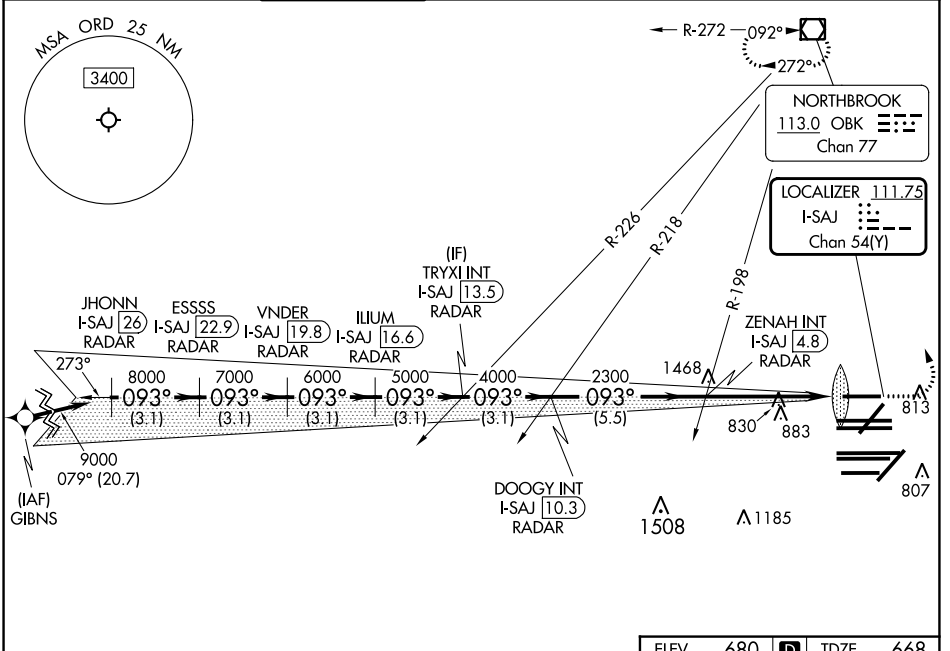
LOC/DME I-SAJ <b>111.75</b> Chan 54 (Y)	APP CRS <b>093°</b>	Rwy Idg 7500	TDZE 668
		Apt Elev 680	

# ILS RWY 9L (CAT II & III)

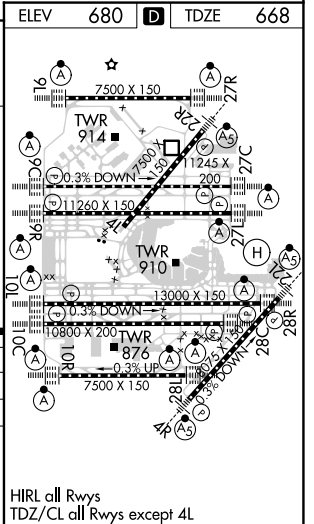
CHICAGO O'HARE INTL (ORD)

RNAV-1 GPS or RADAR required for procedure entry. RADAR or DME required.		ALSF-2 	MISSED APPROACH: Climb to 1100 then climbing left turn to 4000 direct OBK VOR/DME and hold, continue climb-in-hold to 4000.
Simultaneous approach authorized.			

D-ATIS <b>135.4</b> <b>282.225</b>	CHICAGO APP CON <b>119.0 292.125</b>	O'HARE TOWER <b>128.15 348.0</b>	GND CON (TWR CENTER) <b>124.125</b> (TWR NORTH) <b>118.05</b> (TWR SOUTH) <b>226.675</b> (ALL TWRs)	CLNC DEL <b>121.6</b>	CPDLC
--	---	-------------------------------------	--	--------------------------	-------



JHONN I-SAJ 26 RADAR	ESSSS I-SAJ 22.9 RADAR	VNDER I-SAJ 19.8 RADAR	ILIUM I-SAJ 16.6 RADAR	TRYXI INT I-SAJ 13.5 RADAR	DOOGY INT I-SAJ 10.3 RADAR	ZENAH INT I-SAJ 4.8 RADAR	IM 768
3.1 NM	3.1 NM	3.1 NM	3.1 NM	3.1 NM	5.5 NM	5 NM	11.6 NM
GS 3.00° TCH 55		9000 093°		8000		7000	
6000		5000		4000		2300	
CATEGORY	A	B	C	D			
S-ILS 9L	CAT II RA 104/12 100 DA 768						
S-ILS 9L	CAT III RVR 06						
<b>CATEGORY II &amp; III ILS - SPECIAL AIRCREW &amp; AIRCRAFT CERTIFICATION REQUIRED</b>							



EC-3, 11 JUL 2024 to 08 AUG 2024

EC-3, 11 JUL 2024 to 08 AUG 2024