

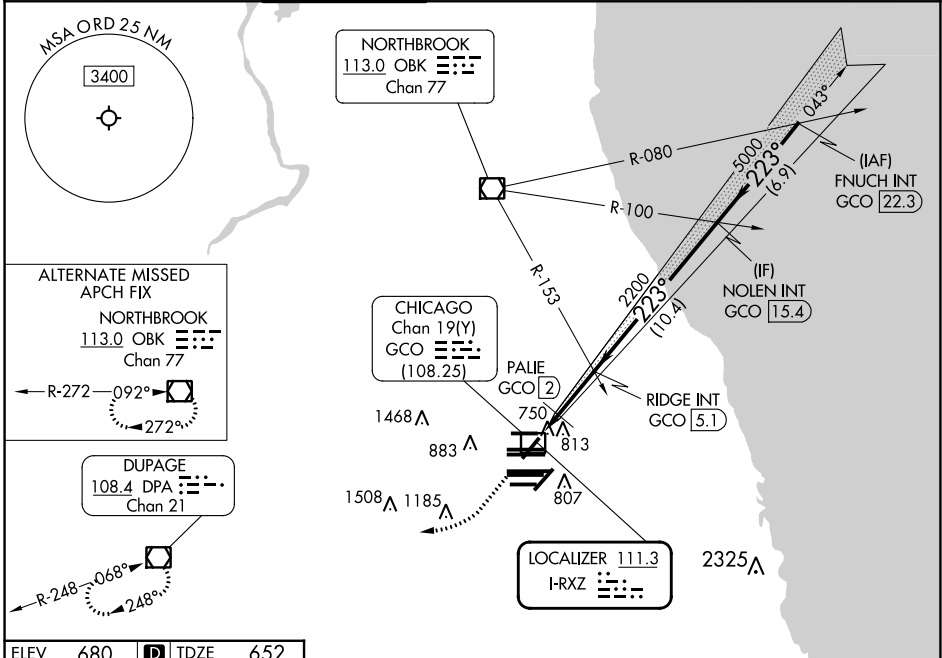
LOC I-RXZ	APP CRS	Rwy ldg TDZE	7300
111.3	223°	652	
		Apt Elev	680

ILS or LOC RWY 22R

CHICAGO O'HARE INTL (ORD)

RADAR required for procedure entry.		MALSR	MISSED APPROACH: Climb to 1300 then climbing right turn to 4000 direct DPA VOR/DME and hold.		
Simultaneous approach authorized. DME from GCO DME.					

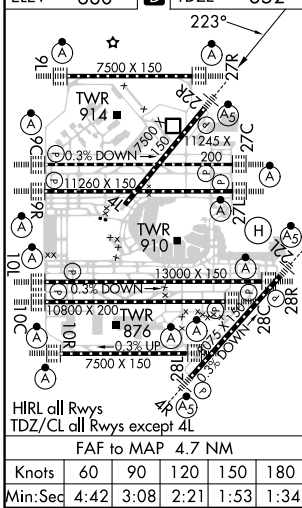
D-ATIS	CHICAGO APP CON	O'HARE TOWER	GND CON (TWR NORTH)	(TWR CENTER) (TWR SOUTH)	CLNC DEL	CPDLC
135.4	119.0	126.9 348.0	124.125	121.75 (OBND) 121.9 (IBND)	121.6	
282.225	292.125		118.05 (TWR SOUTH)	226.675 (ALL TWRs)		



EC-3, 11 JUL 2024 to 08 AUG 2024

EC-3, 11 JUL 2024 to 08 AUG 2024

ELEV 680	D	TDZE 652
----------	----------	----------



1300	4000	DPA	VGSI and ILS glidepath not coincident (VGSI Angle 3.00/TCH 69).	
			RIDGE INT GCO 5.1	NOLEN INT GCO 15.4
			FNUCH INT GCO 22.3	
			2200	5000
			1220	2200
			0.8 NM	0.8 - 3.1 NM
			10.4 NM	6.9 NM
			GS 3.00° TCH 49	
CATEGORY	A	B	C	D
S-ILS 22R	852/18 200 (200-½)			
S-LOC 22R	1220/24	568 (600-½)	1220-1¼	568 (600-1¼)
C CIRCLING	1220-1	540 (600-1)	1220-1½	1460-2½
PALIE FIX MINIMUMS				
S-LOC 22R	980/24	328 (300-½)	980/26	328 (300-½)
C CIRCLING	1220-1	540 (600-1)	1220-1½	1460-2½
540 (600-1½) 780 (800-2½)				