

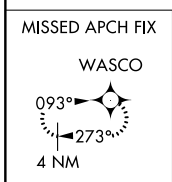
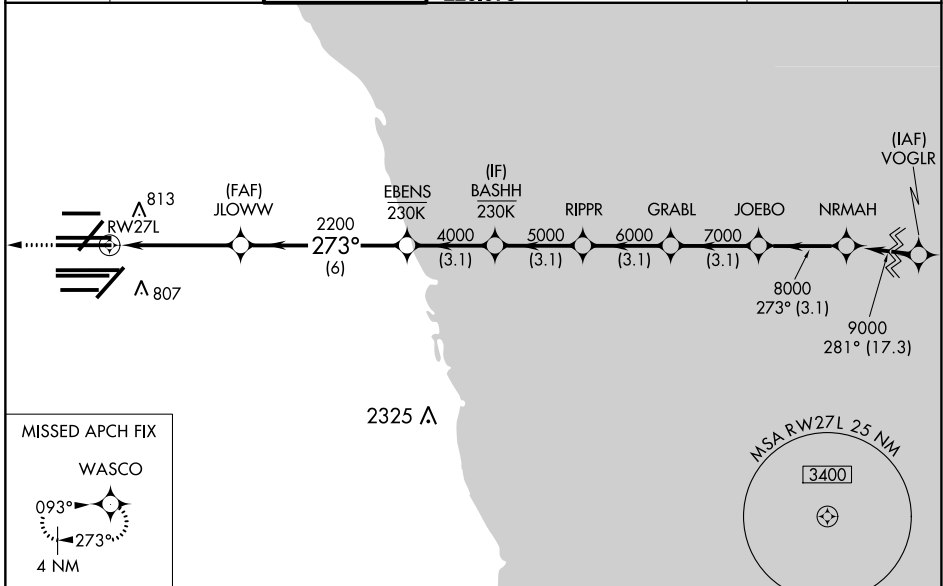
WAAS CH <b>77804</b> <b>W27A</b>	APP CRS <b>273°</b>	Rwy Idg <b>11260</b> TDZE <b>654</b> Apt Elev <b>680</b>
--	------------------------	--

# RNAV (GPS) Z RWY 27L

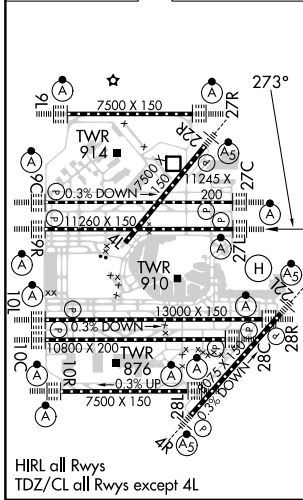
CHICAGO O'HARE INTL (ORD)

RNP APCH - GPS.		ALSIF-2	MISSED APPROACH: Climb to 4000 direct WASCO and hold.
<p>Simultaneous approach authorized. LNAV procedure NA during simultaneous operations. Use of FD or AP required during simultaneous operations. For uncompensated Baro-VNAV systems, LNAV/VNAV NA below -19°C or above 54°C.</p>			

D-ATIS <b>135.4</b> <b>282.225</b>	CHICAGO APP CON <b>119.0 292.125</b>	O'HARE TOWER <b>126.9 348.0</b>	GND CON (TWR NORTH) <b>124.125</b> (TWR SOUTH) <b>118.05</b> (ALL TWRs) <b>226.675</b>	(TWR CENTER) <b>121.75</b> (IOBND) <b>121.9</b> (IBND)	CLNC DEL <b>121.6</b>	CPDLC
--	---	------------------------------------	---	--	--------------------------	-------



ELEV 680	<b>D</b>	TDZE 654
----------	----------	----------



4000	WASCO	VGSI and RNAV glidepath not coincident (VGSI Angle 3.00/TCH 77).				NRMAH		
↑		JLOWWW	EBENS	BASHH	RIPPR	GRABL	JOEBO	9000
		2200	4000	5000	6000	7000	8000	9000
		1.2 NM to RW27L	3.5 NM	3.1 NM	3.1 NM	3.1 NM	3.1 NM	GP 3.00° TCH 57
CATEGORY	A	B	C	D				
LPV DA	854/18		200 (200-½)					
LNAV/VNAV DA	1088/40		434 (500-¾)					
LNAV MDA	1100/24	446 (500-½)		1100/45	446 (500-¾)			

EC-3, 11 JUL 2024 to 08 AUG 2024

EC-3, 11 JUL 2024 to 08 AUG 2024