

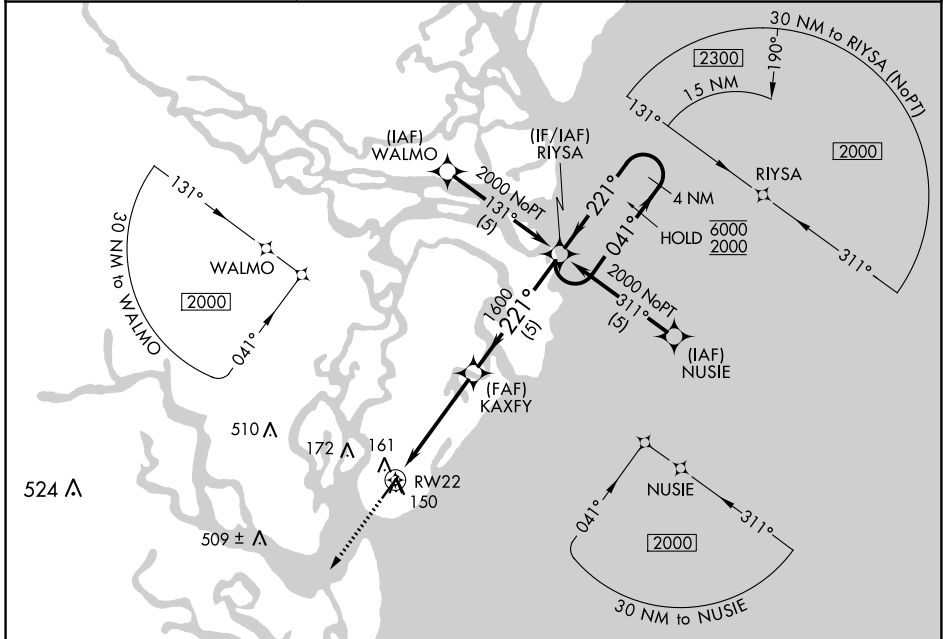
APP CRS	Rwy Idg	4671
221°	TDZE	17
	Apt Elev	19

RNAV (GPS) RWY 22

ST SIMONS ISLAND (SSI)

RNP APCH.	<p>▼ Rwy 22 helicopter visibility reduction below $\frac{3}{4}$ SM NA. Circling Rwy 16, 34 NA at night.</p>	MISSED APPROACH: Climb to 2000 direct VIXRY and hold.
-----------	---	---

AWOS-3PT 120.025	JACKSONVILLE CENTER 126.75 277.4	UNICOM 123.05 (CTAF) 0
----------------------------	--	----------------------------------

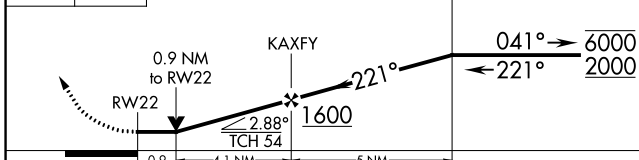


SE-4, 11 JUL 2024 to 08 AUG 2024

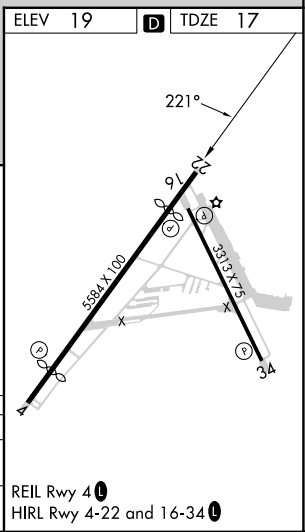
SE-4, 11 JUL 2024 to 08 AUG 2024

ELEV 19	D TDZE 17
---------	------------------

2000 VIXRY VGSI and descent angles not coincident (VGSI Angle 4.00/TCH 54).



CATEGORY	A	B	C	D
LNVA MDA	460-1 443 (500-1)		460-1 $\frac{3}{8}$ 443 (500-1 $\frac{3}{8}$)	
CIRCLING	480-1 461 (500-1)		500-1 $\frac{1}{2}$ 481 (500-1 $\frac{1}{2}$)	580-2 561 (600-2)



REIL Rwy 4 0
HIRL Rwy 4-22 and 16-34 0