

GOLDSBORO, NORTH CAROLINA

RNAV (GPS) RWY 26

WAAS CH 95096 W26A	APCH CRS 261°	Rwy ldg TDZE Arprt Elev	11,760 109 109
---------------------------------	-------------------------	-------------------------------	---

- (USAF)

SEYMOUR JOHNSON AFB (KGSB)

RNP APCH-GPS

▼ * When ALS inop, increase RVR to 40, vis to 3/4 mile.
 ** When ALS, inop increase RVR to 60, vis to 1 1/8 miles.

ALS-F1



MISSSED APPROACH: Climb to 2200 direct RITIE and hold.

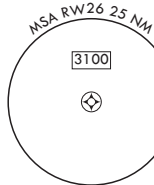
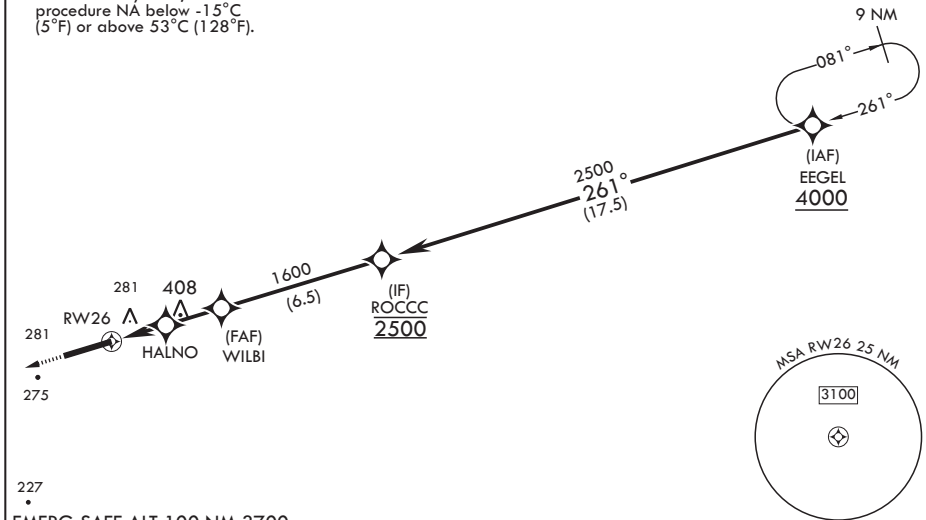
ATIS★ 317.625	APP CON 119.7 273.6 (111° -257°) 123.7 290.9 (258° -110°)	TOWER★ 126.25 370.875	GND CON 132.45 275.8	CLNC DEL 128.025 270.8
-------------------------	---	---------------------------------	--------------------------------	----------------------------------

*** When ALS inop, increase CAT
 AB RVR to 55, vis to 1 mile;
 CAT CDE vis to 1 1/4 miles.
 **** Circling NA N of Rwy 8-26.

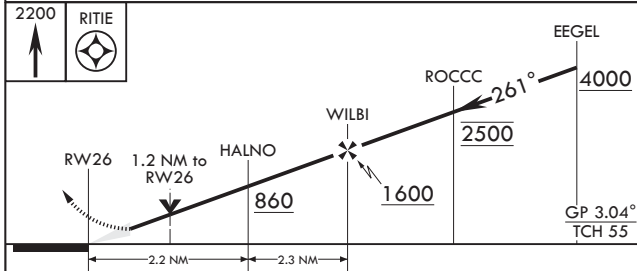
MISSSED APPROACH



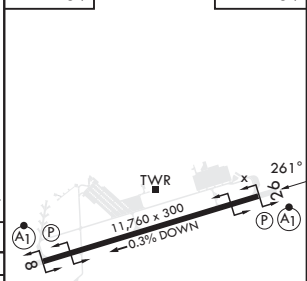
For uncompensated
 Baro-VNAV systems,
 procedure NA below -15°C
 (5°F) or above 53°C (128°F).



EMERG SAFE ALT 100 NM 3700



ELEV 109 TDZE 109



CATEGORY	A	B	C	D	E
LPV DA*	309/24		200	(200-1/2)	
LNAV/VNAV DA**	510/40		401	(500-3/4)	
LNAV MDA***	540/24	431 (500-1/2)	540/40	431	(500-3/4)
C CIRCLING****	580-1	600-1	680-1 1/2	740-2	740-2 1/4
	471 (500-1)	491 (500-1)	571 (600-1 1/2)	631 (700-2)	631 (700-2 1/4)

HIRL all Rwys

GOLDSBORO, NORTH CAROLINA

35°20'N - 77°58'W

SEYMOUR JOHNSON AFB (KGSB)

Amdt 6 11JUL24

RNAV (GPS) RWY 26

SE-2, 11 JUL 2024 to 08 AUG 2024

SE-2, 11 JUL 2024 to 08 AUG 2024