

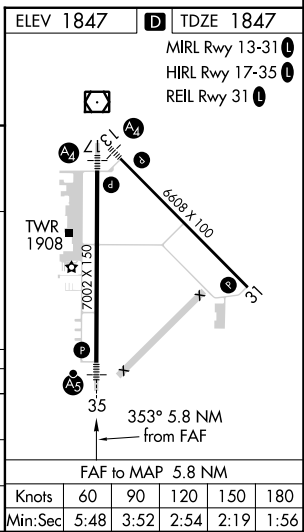
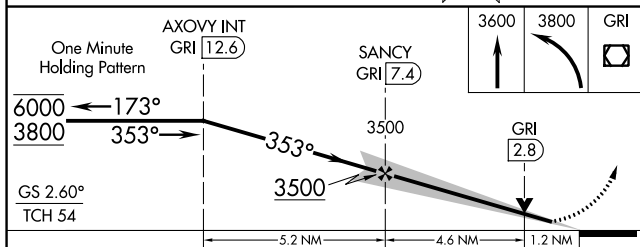
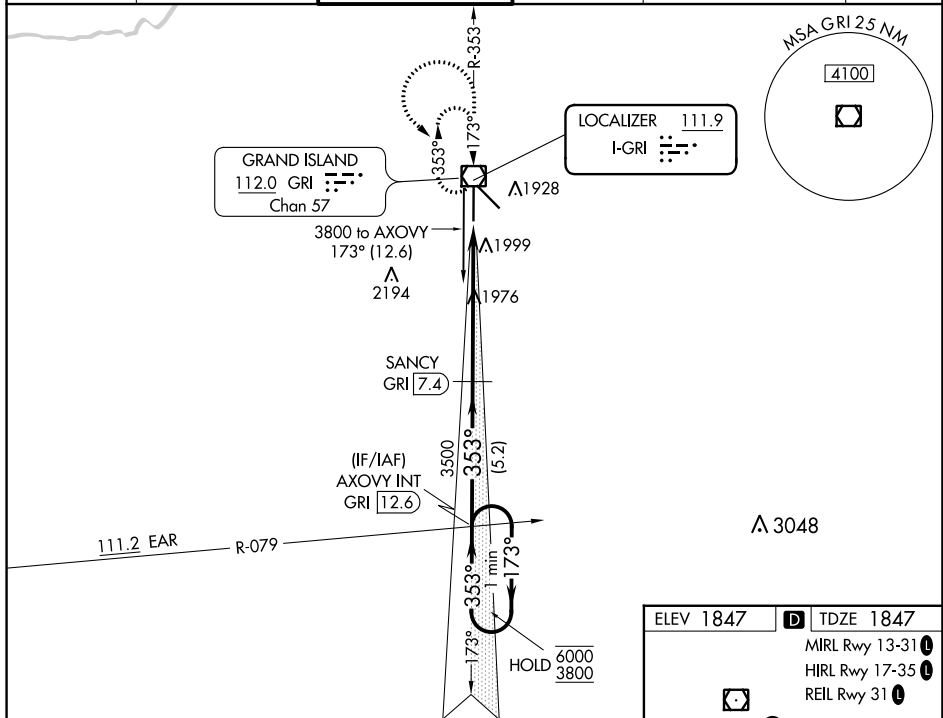
LOC I-GRI <b>111.9</b>	APP CRS <b>353°</b>	Rwy Idg <b>7002</b>	<b>TDZE 1847</b>
		Apt Elev <b>1847</b>	

# ILS or LOC RWY 35

CENTRAL NEBRASKA RGNL (GRI)

DME required for LOC only.		MALSR 	MISSED APPROACH: Climb to 3600 then climbing left turn to 3800 direct GRI VOR/DME and hold, continue climb-in-hold to 3800.
⚠ For inop ALS, increase S-LOC 35 Cat C/D visibility to RVR 6000. DME from GRI VOR/DME, DME use requires simultaneous reception of I-GRI and GRI DME. *RVR 1800 authorized with use of FD or AP or HUD to DA. (NA when using Aurora altimeter setting).			

ATIS <b>127.4</b>	MINNEAPOLIS CENTER <b>119.4 278.8</b>	GRAND ISLAND TOWER* <b>118.2 (CTAF) 259.3</b>	GND CON <b>121.9 259.3</b>	CLNC DEL <b>121.9</b> (when twr closed)	UNICOM <b>122.95</b>
----------------------	--	--	-------------------------------	---	-------------------------



CATEGORY	A	B	C	D
S-ILS 35*	2047/24 200 (200-½)			
S-LOC 35	2240/24	393 (400-½)	2240/35	393 (400-¾)
CIRCLING	2300-1	453 (500-1)	2400-1½	2560-2¼
			553 (600-1½)	713 (800-2¼)

NC-2, 11 JUL 2024 to 08 AUG 2024

NC-2, 11 JUL 2024 to 08 AUG 2024