


LOC I-GRI <b>111.9</b>	APP CRS <b>173°</b>	Rwy Idg <b>7002</b>	TDZE <b>1844</b>	Apt Elev <b>1847</b>
---------------------------	------------------------	------------------------	---------------------	-------------------------

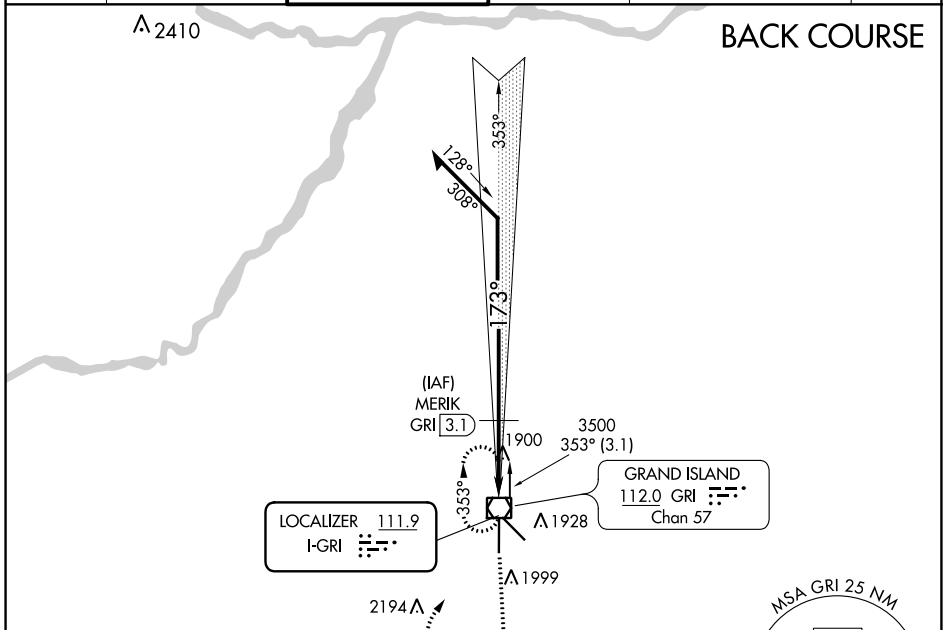
# LOC/DME BC RWY 17

CENTRAL NEBRASKA RGNL (GRI)

⚠ Simultaneous reception of I-GRI and GRI DME required. When local altimeter setting not received, use Aurora altimeter setting and increase all MDA 60 feet, and S-17 Cat D visibility ¼ SM and Circling Cat C/D visibility ¼ SM.

MALS  MISSED APPROACH: Climb to 3700 on heading 170° then right turn direct GRI VOR/DME and hold.

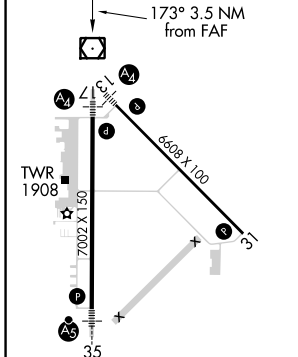
ATIS <b>127.4</b>	MINNEAPOLIS CENTER <b>119.4 278.8</b>	GRAND ISLAND TOWER ★ <b>118.2 (CTAF) 0 259.3</b>	GND CON <b>121.9 259.3</b>	CLNC DEL <b>121.9</b> (when tower closed)	UNICOM <b>122.95</b>
----------------------	--	---	-------------------------------	---	-------------------------



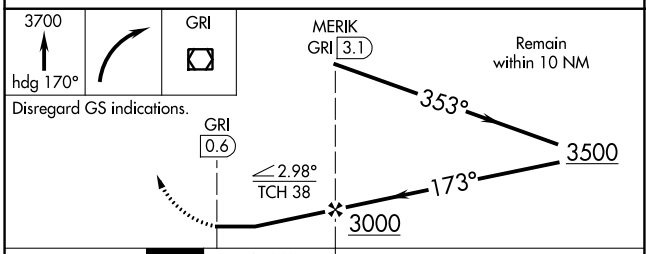
NC-2, 11 JUL 2024 to 08 AUG 2024

NC-2, 11 JUL 2024 to 08 AUG 2024

ELEV <b>1847</b>	<b>D</b>	TDZE <b>1844</b>
------------------	----------	------------------



- MIRL Rwy 13-31 
- HIRL Rwy 17-35 
- REIL Rwy 31 



CATEGORY	A	B	C	D
S-17	2160-¾ 316 (400-¾)		2400-1½	2160-1 316 (400-1)
CIRCLING	2300-1	453 (500-1)	553 (600-1½)	2560-2¼ 713 (800-2¼)