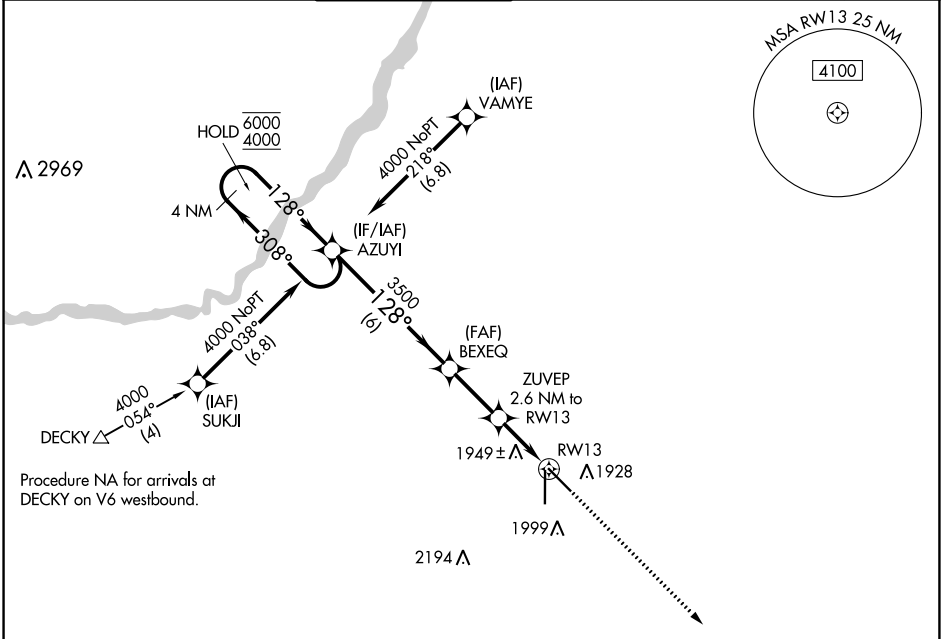


APP CRS	Rwy Idg	6608
128°	TDZE	1842
	Apt Elev	1847

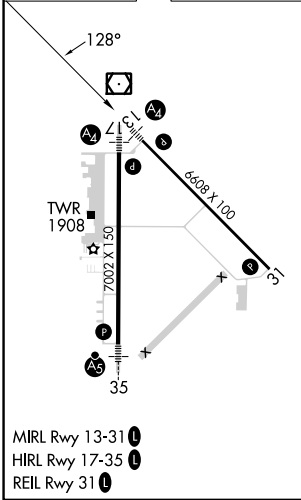
RNAV (GPS) RWY 13

CENTRAL NEBRASKA RGNL (GRI)

RNP APCH - GPS.			MAL S		MISSED APPROACH: Climb to 4100 direct AGEKY and hold.	
ATIS	MINNEAPOLIS CENTER	GRAND ISLAND TOWER*	GND CON	CLNC DEL	UNICOM	
127.4	119.4 278.8	118.2 (CTAF) 0 259.3	121.9 259.3	126.05 (when tower closed)	122.95	



ELEV 1847	D	TDZE 1842
-----------	----------	-----------



VGS1 and descent angles not coincident (VGS1 Angle 3.00/TCH 35).				4100	AGEKY
4 NM Holding Pattern		AZUYI	BEXEQ	ZUVEP 2.6 NM to RW13	1 NM to RW13
6000	4000	3500	2700		
6 NM		2.5 NM	1.5 NM	1 NM	
CATEGORY	A	B	C	D	
LNAV MDA	2200- ³ / ₄		358 (400- ³ / ₄)		
CIRCLING	2300-1	453 (500-1)	2400-1 ¹ / ₂ 553 (600-1 ¹ / ₂)	2560-2 ¹ / ₄ 713 (800-2 ¹ / ₄)	

NC-2, 11 JUL 2024 to 08 AUG 2024

NC-2, 11 JUL 2024 to 08 AUG 2024