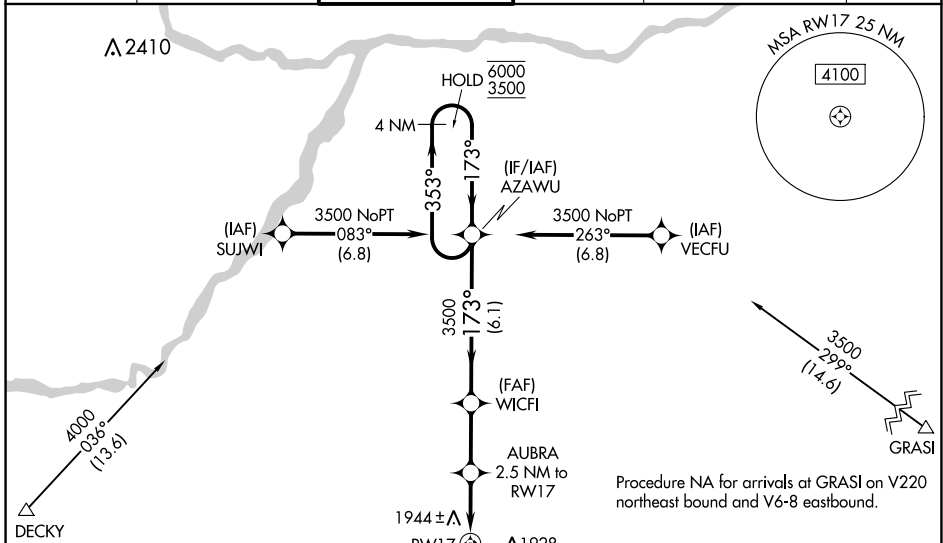


WAAS CH 60999 W17A	APP CRS 173°	Rwy Idg TDZE 1844 Apt Elev 1847	7002
--	------------------------	---	-------------

RNAV (GPS) RWY 17

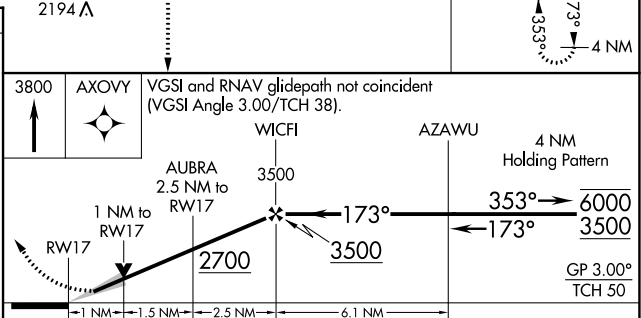
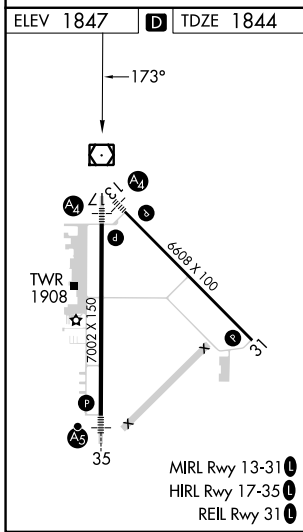
CENTRAL NEBRASKA RGNL (GRI)

RNP APCH - GPS.		GRAND ISLAND TOWER * 118.2 (CTAF) 0 259.3		GND CON 121.9 259.3	CLNC DEL 121.9 (when tower closed)	UNICOM 122.95
ATIS 127.4	MINNEAPOLIS CENTER 119.4 278.8					



Procedure NA for arrivals at DECKY on V6 westbound.

Procedure NA for arrivals at GRASI on V220 northeast bound and V6-8 eastbound.



CATEGORY	A	B	C	D
LPV DA		2044- ³ / ₄	200 (200- ³ / ₄)	
LNAV/VNAV DA		2125- ³ / ₄	281 (300- ³ / ₄)	
LNAV MDA		2200- ³ / ₄	356 (400- ³ / ₄)	
CIRCLING	2300-1	453 (500-1)	2400-1 ¹ / ₂ 553 (600-1 ¹ / ₂)	2560-2 ¹ / ₄ 713 (800-2 ¹ / ₄)

NC-2, 11 JUL 2024 to 08 AUG 2024

NC-2, 11 JUL 2024 to 08 AUG 2024