

APP CRS	Rwy Idg	6608
	TDZE	1844
308°	Apt Elev	1847

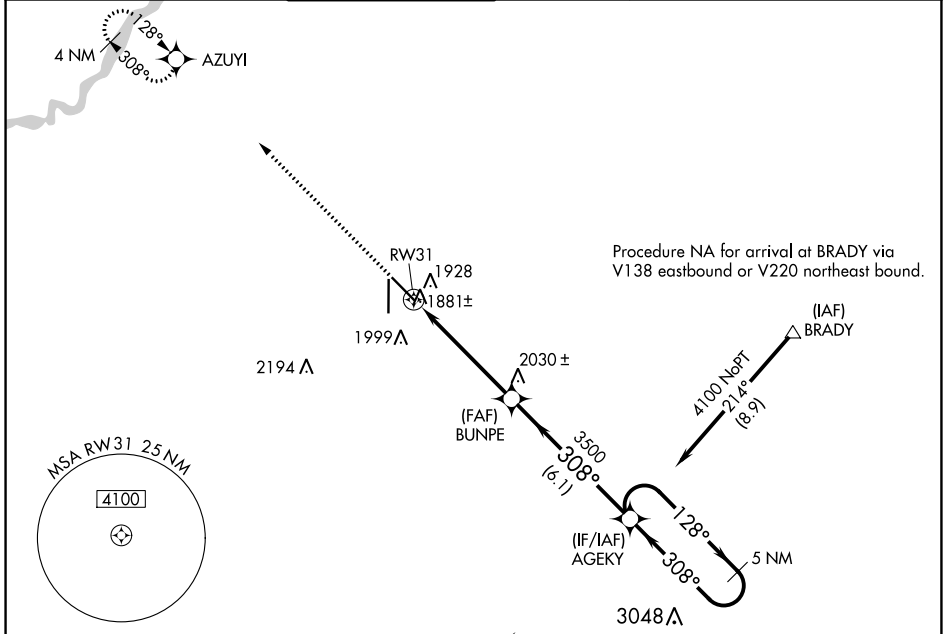
RNAV (GPS) RWY 31

CENTRAL NEBRASKA RGNL (GRI)

⚠ DME/DME RNP-0.3 NA. When local altimeter setting not received, use Aurora altimeter setting and increase all MDA 60 feet; increase LNAV Cats C/D visibility 1/8 SM and Circling Cats C/D visibility 1/4 SM. VDP NA when using Aurora altimeter setting.

MISSED APPROACH: Climb to 4000 direct AZUYI and hold.

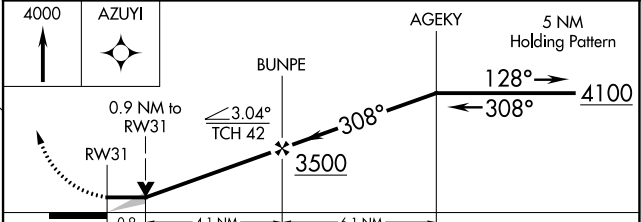
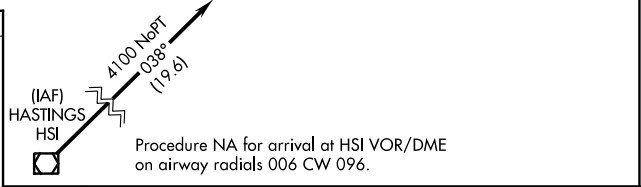
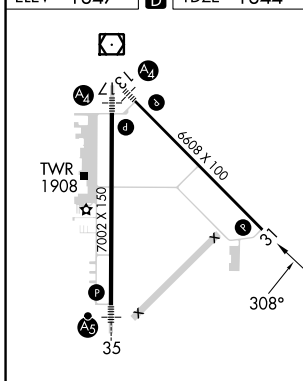
ATIS 127.4	MINNEAPOLIS CENTER 119.4 278.8	GRAND ISLAND TOWER ★ 118.2 (CTAF) 0 259.3	GND CON 121.9 259.3	CLNC DEL 126.05 (when tower closed)	UNICOM 122.95
----------------------	--	---	-------------------------------	---	-------------------------



NC-2, 11 JUL 2024 to 08 AUG 2024

NC-2, 11 JUL 2024 to 08 AUG 2024

ELEV 1847	D	TDZE 1844
-----------	----------	-----------



CATEGORY	A	B	C	D
LNAV MDA	2180-1 336 (400-1)			
CIRCLING	2300-1 453 (500-1)	2400-1½ 553 (600-1½)	2560-2¼ 713 (800-2¼)	