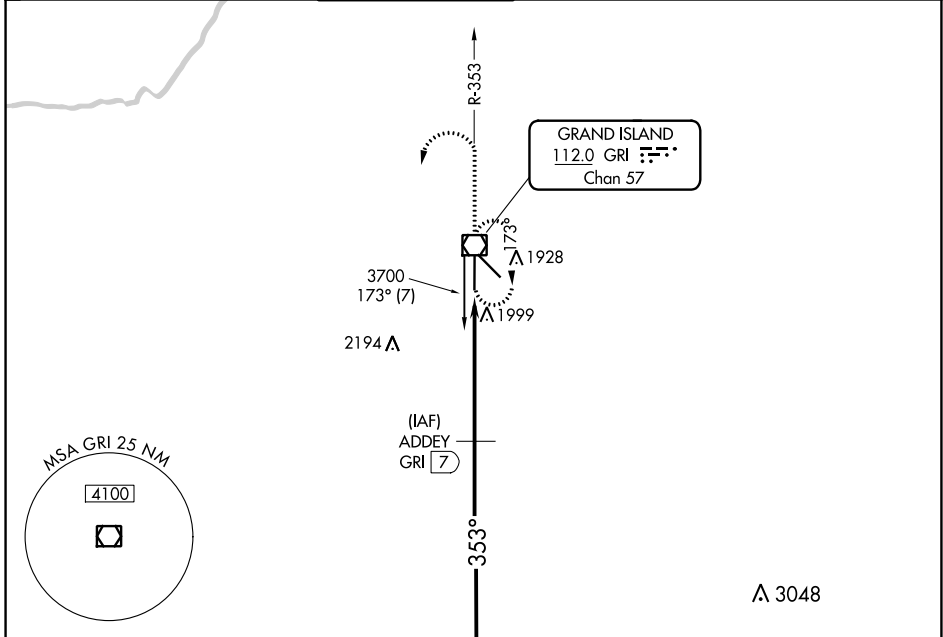


VOR/DME GRI 112.0 Chan 57	APP CRS 353°	Rwy Idg 7002 TDZE 1847 Apt Elev 1847
---	------------------------	---

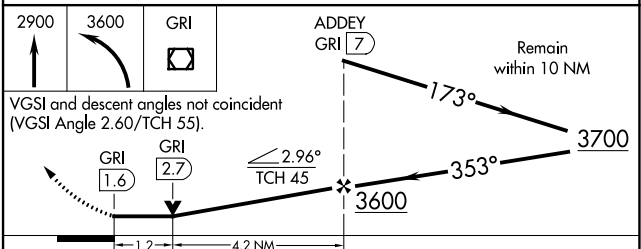
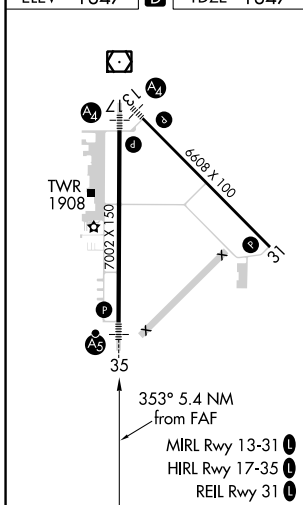
VOR/DME RWY 35

CENTRAL NEBRASKA RGNL (GRI)

<p>⚠ VDP NA when using Aurora altimeter setting. When local altimeter setting not received, use Aurora altimeter setting and increase all MDA 60 feet, increase Circling Cats C/D visibility ¼ SM. For inop MALSRL, increase S-35 Cat D visibility to 1¼ mile.</p>		<p>MALSRL </p>	<p>MISSED APPROACH: Climb to 2900, then climbing left turn to 3600 direct GRI VOR/DME and hold.</p>		
ATIS 127.4	MINNEAPOLIS CENTER 119.4 278.8	GRAND ISLAND TOWER* 118.2 (CTAF) 0259.3	GND CON 121.9 259.3	CINC DEL 121.9 <small>(when tower closed)</small>	UNICOM 122.95



ELEV 1847	D	TDZE 1847
-----------	----------	-----------



CATEGORY	A	B	C	D
S-35	2260-½ 413 (500-½)		2260-¾ 413 (500-¾)	2260-1 413 (500-1)
CIRCLING	2300-1 453 (500-1)		2400-1½ 553 (600-1½)	2560-2¼ 713 (800-2¼)

NC-2, 11 JUL 2024 to 08 AUG 2024

NC-2, 11 JUL 2024 to 08 AUG 2024