

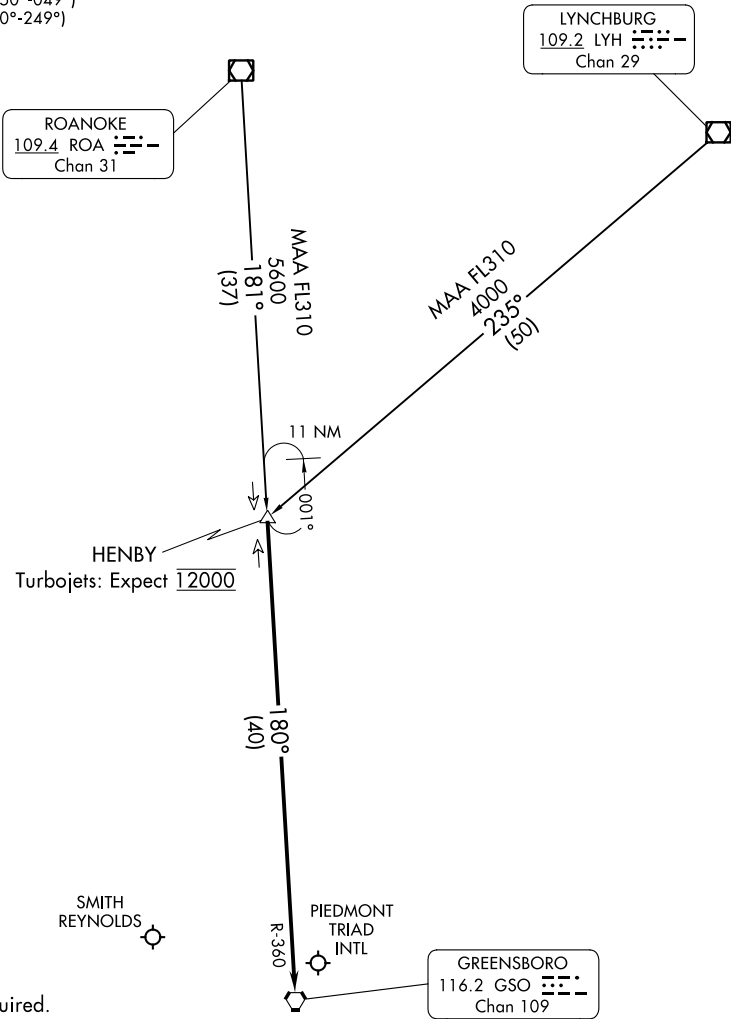
(HENBY.HENBY3) 24081

AL-178 (FAA)

HENBY THREE ARRIVAL

GREENSBORO, NORTH CAROLINA

GREENSBORO APP CON
 124.35 269.225 (250°-049°)
 126.6 327.075 (050°-249°)
 GSO D-ATIS
 128.55
 INT ATIS
 121.3



HENBY
 Turbojets: Expect 12000

NOTE: DME required.

NOTE: Chart not to scale.

ARRIVAL ROUTE DESCRIPTION

LYNCHBURG TRANSITION (LYH.HENBY3): From over LYH VOR/DME on LYH R-235 to HENBY INT. Thence. . . .

ROANOKE TRANSITION (ROA.HENBY3): From over ROA VOR/DME on ROA R-181 to HENBY INT. Thence. . . .

. . . .from over HENBY on GSO R-360 to GSO VORTAC, thence. . . expect RADAR vectors to final approach course.

HENBY THREE ARRIVAL

(HENBY.HENBY3) 03JAN19

GREENSBORO, NORTH CAROLINA

SE-2, 11 JUL 2024 to 08 AUG 2024

SE-2, 11 JUL 2024 to 08 AUG 2024