

HI-ILS or LOC Z RWY 8

LOC I-LFI 109.9	APCH CRS 078°	Rwy Ildg 10,002	TDZE 8	Arprt Elev 8
---------------------------	-------------------------	--------------------	-----------	-----------------

[USAF]

LANGLEY AFB (KLFJ)

RADAR or DME required.



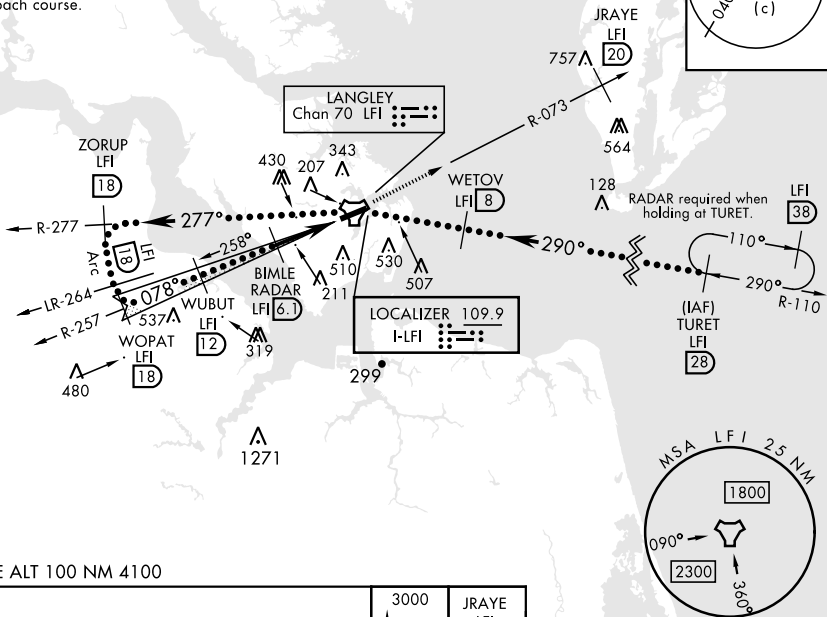
MISSED APPROACH: Climb to 3000 via LFI R-073 to 20 DME (JRAYE), then as instructed by ATC.

- * When ALS inop, increase RVR to 40 and vis to 3/8 mile.
- ** When ALS inop, increase vis to 1 3/8 miles.
- *** Circling S of Rwy 8-26 not authorized.

ATIS ★ 270.1	NORFOLK APP CON 125.7 335.625	TOWER ★ 125.0 253.5	GND CON 121.7 275.8	CLNC DEL 118.85 257.625
------------------------	---	-------------------------------	-------------------------------	-----------------------------------

Glideslope unusable for coupled approach below 750' MSL.

Expect RADAR vectors to IAF or Final Approach course.



NE-3, 11 JUL 2024 to 08 AUG 2024

NE-3, 11 JUL 2024 to 08 AUG 2024

EMERG SAFE ALT 100 NM 4100

WOPAT LFI 18	ZORUP LFI 18	TACAN LFI 8	WETOV LFI 8	TURET LFI 28	ELEV	8	TDZE	8		
3000	3000	7000	7000	12,000	215					
2000	2000	5000	5000	5000	122					
1600	1600	1600	1600	1600	128					
078°	078°	078°	078°	078°	078°					
4.7 NM	0.5	0.5	0.5	0.5	10.02 x 150					
CATEGORY	C		D	E	FAF to MAP 4.7 NM					
S-ILS 8*	208/24		200	(200-1/2)	Knots	120	140	160	180	200
S-LOC 8**	480/50		472	(500-1)	Min:Sec	2:21	2:01	1:46	1:34	1:25
CIRCLING ***	700-2 692 (700-2)		760-2 1/2 752 (800-2 1/2)	760-2 3/4 752 (800-2 3/4)	HIRL Rwy 8-26					

HI-ILS or LOC Z RWY 8