

# HI-TACAN Z RWY 26

TACAN LFI Chan <b>70</b>	APCH CRS <b>263°</b>	Rwy ldg <b>10,002</b> TDZE <b>8</b> Arprt Elev <b>8</b>
--------------------------	----------------------	---

[USAF]

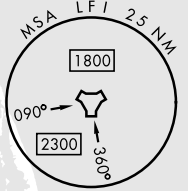
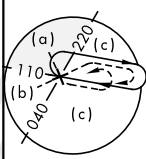
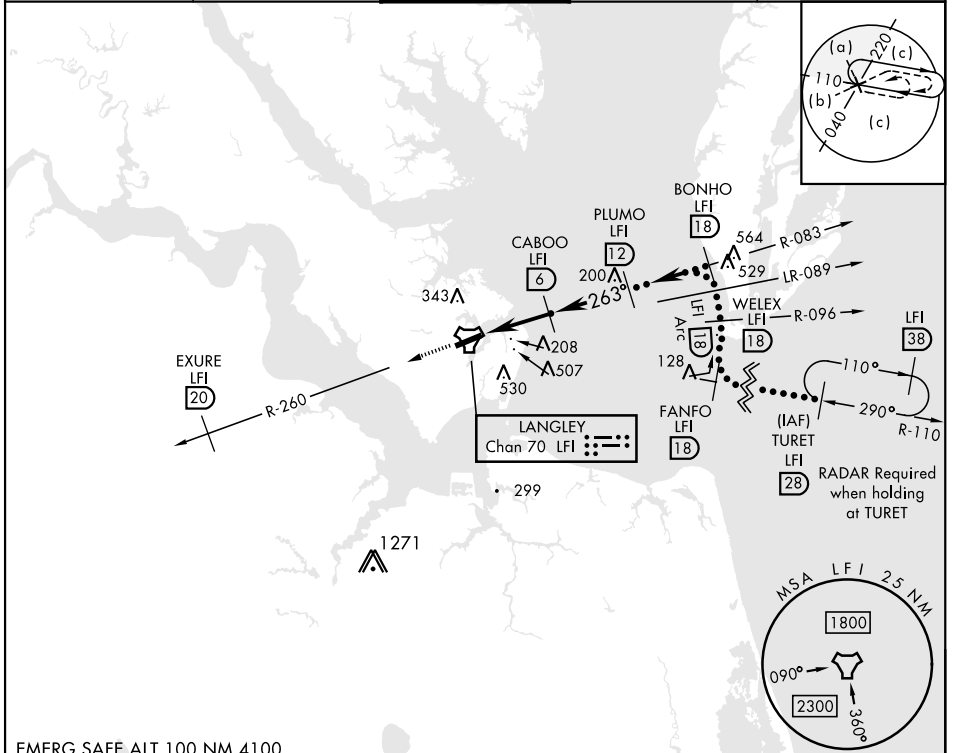
LANGLEY AFB (KLFJ)

▼ \* When ALS inop, increase CAT CDE vis to 1½ miles.  
 \*\* Circling S of Rwy 8-26 not authorized.



MISSED APPROACH: Climb to 3000 via LFI R-260 to 20 DME (EXURE), then as instructed by ATC.

ATIS * <b>270.1</b>	NORFOLK APP CON <b>125.7 335.625</b>	TOWER * <b>125.0 253.5</b>	GND CON <b>121.7 275.8</b>	CLNC DEL <b>118.85 257.625</b>
---------------------	--------------------------------------	----------------------------	----------------------------	--------------------------------

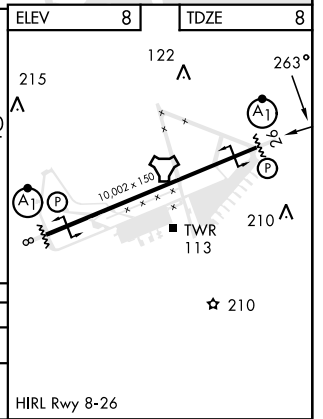


NE-3, 11 JUL 2024 to 08 AUG 2024

NE-3, 11 JUL 2024 to 08 AUG 2024

EMERG SAFE ALT 100 NM 4100

3000 LFI R-260	EXURE LFI 20			
CATEGORY	C	D	E	
S-26 *	480/50	472	(500-1)	
CIRCLING **	700-2 692 (700-2)	760-2½ 752 (800-2½)	760-2¾ 752 (800-2¾)	



# HI-TACAN Z RWY 26