

HAMPTON, VIRGINIA

# RNAV (GPS) RWY 26

WAAS CH 41171 W26A	APCH CRS 258°	Rwy ldg TDZE 10,002 8	Arprt Elev 8
--------------------------	------------------	-----------------------------	-----------------

-(USAF)

LANGLEY AFB (KLFJ)

RNP APCH

▼ \* When ALS inop increase RVR to 40, vis to 3/4 mile.  
\*\* When ALS inop, increase RVR to 60, vis to 1 1/8 miles.

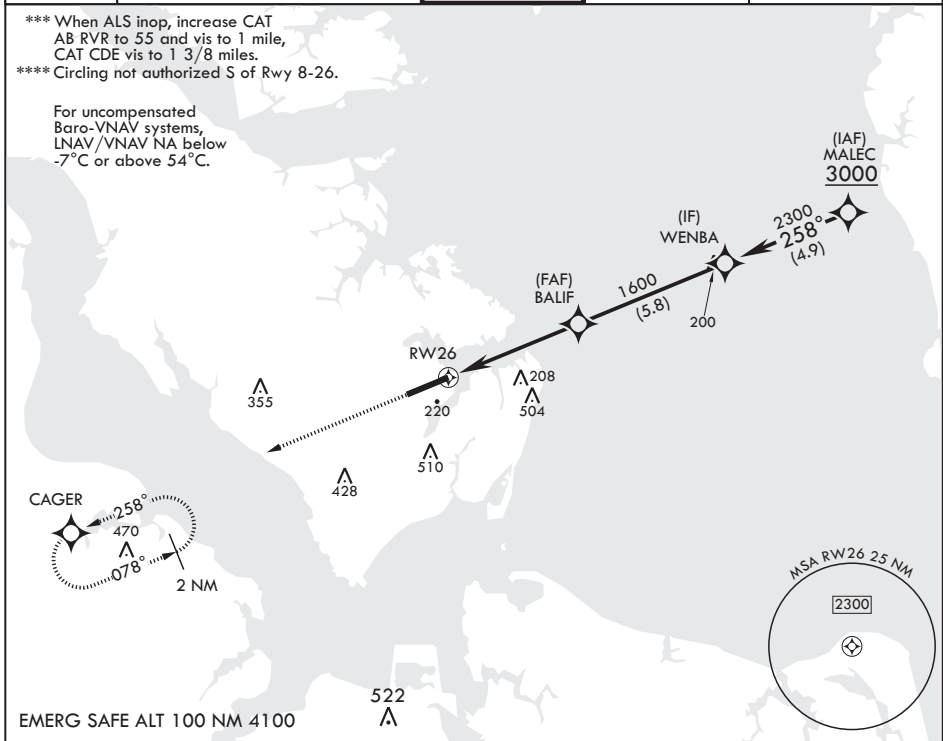
ALS-1

MISSED APPROACH: Climb to 3000 on course 258° to CAGER WPT and hold.

ATIS★ 270.1	NORFOLK APP CON/DEP CON 125.7 335.625	TOWER★ 125.0 253.5	GND CON 121.7 275.8	CLNC DEL 118.85 257.625
----------------	--	-----------------------	------------------------	----------------------------

\*\*\* When ALS inop, increase CAT  
AB RVR to 55 and vis to 1 mile,  
CAT CDE vis to 1 3/8 miles.  
\*\*\*\* Circling not authorized S of Rwy 8-26.

For uncompensated  
Baro-VNAV systems,  
LNAV/VNAV NA below  
-7°C or above 54°C.



NE-3, 11 JUL 2024 to 08 AUG 2024

NE-3, 11 JUL 2024 to 08 AUG 2024

3000 ↑ CAGER	WENBA 2300					ELEV 8	TDZE 8
RWY 26		BALIF		WENBA		A 260	
1.4 NM to RWY 26		1600		2300		A 215, A 207, A 122, A 108, A 210	
5.2 NM		GP 2.80° TCH 57				A 108, A 210, TWR 113, BCN 210	
CATEGORY	A	B	C	D	E		
LPV DA*	208/24		200	(200-1/2)			
LNAV/VNAV DA**	404/35		396	(400-5/8)			
LNAV MDA***	480/24	472 (500-1/2)	480/50	472	(500-1)		
CIRCLING****	540-1	580-1	700-2	760-2 1/2	760-2 3/4		
	532 (600-1)	572 (600-1)	692 (700-2)	752 (800-2 1/2)	752 (800-2 3/4)		
HIRL all Rwys							

HAMPTON, VIRGINIA

37°05'N - 76°22'W

LANGLEY AFB (KLFJ)

Amdt 7 28DEC23

# RNAV (GPS) RWY 26