

APP CRS <b>091°</b>	Rwy Idg TDZE Apt Elev	<b>9000</b> <b>3864</b> <b>3877</b>
------------------------	-----------------------------	---

# RNAV (GPS) Y RWY 9

HELENA RGNL (HLN)

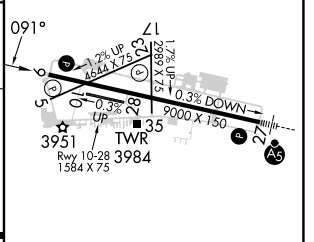
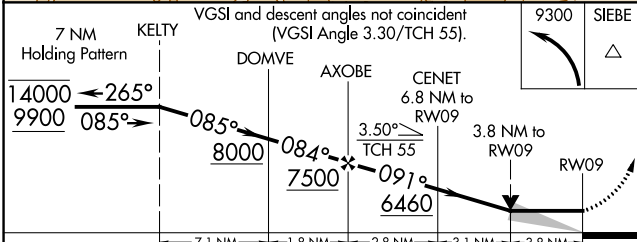
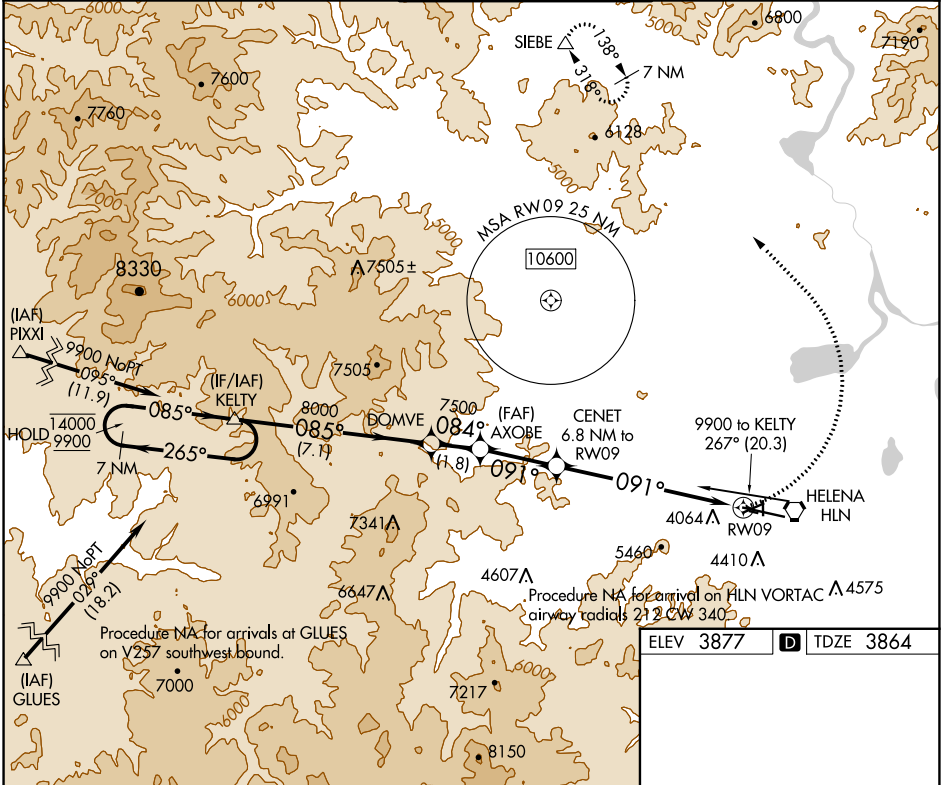
RNP APCH - GPS.

**⚠** Circling NA to Rwy 10 and 28. Circling NA for Cat D south of Rwy 9-27. Circling Rwy 5, 23, 35, NA at night.

**⚠** -17°C

MISSED APPROACH: Climbing left turn to 9300 direct SIEBE and hold, continue climb-in-hold to 9300.

ATIS <b>120.4</b>	HELENA APP CON ★ <b>119.5 229.4</b>	HELENA TOWER ★ <b>118.3 (CTAF) 257.8</b>	GND CON <b>121.9</b>	UNICOM <b>122.95</b>
----------------------	--	---	-------------------------	-------------------------



CATEGORY	A	B	C	D
LNVA MDA	5220-1¼ 1356 (1400-1¼)	5220-1½ 1356 (1400-1½)	5220-3	1356 (1400-3)
<b>C</b> CIRCLING	5220-1¼ 1343 (1400-1¼)	5220-1½ 1343 (1400-1½)	6000-3	2123 (2200-3)

REIL Rwy 9, 17, and 35  
MIRL Rwy 5-23 and 17-35  
HIRL Rwy 9-27

NW-1, 11 JUL 2024 to 08 AUG 2024

NW-1, 11 JUL 2024 to 08 AUG 2024