

|  |                        |                             |   |
|--|------------------------|-----------------------------|---|
| WAAS<br>CH <b>48820</b><br><b>W35A</b> | APP CRS<br><b>352°</b> | Rwy Idg<br>TDZE<br>Apt Elev | <b>6002</b><br><b>917</b><br><b>930</b> |
|--|------------------------|-----------------------------|---|

# RNAV (GPS) RWY 35R

SOUTH TEXAS RGNL AT HONDO (HDO)

RNP APCH.

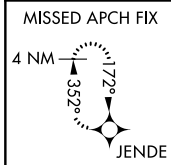
Baro-VNAV NA when using Castroville altimeter setting. For uncompensated Baro-VNAV systems, LNAV/VNAV NA below -16°C (4°F) or above 47°C (116°F). Visibility reduction by helicopters NA. When local altimeter setting not received, use Castroville altimeter setting and increase all DA 62 feet and all MDA 80 feet, increase LNAV/VNAV all Cats, and LNAV and Circling Cats C and D visibility ¼ mile. Circling Rwy 8, 13, 17R, 26, 31, 35L NA at night.

MISSED APPROACH:  
Climb to 3700 direct  
JENDE and hold.

ASOS  
**119.675**

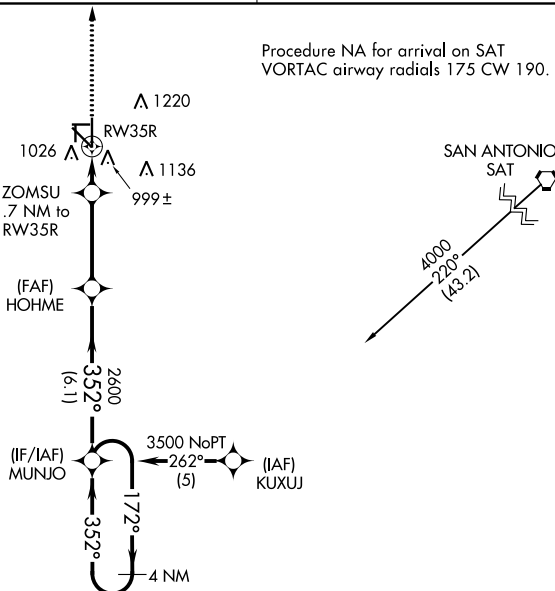
HOUSTON CENTER  
**134.95 269.4**

UNICOM  
**122.725 (CTAF)**



△ 1448

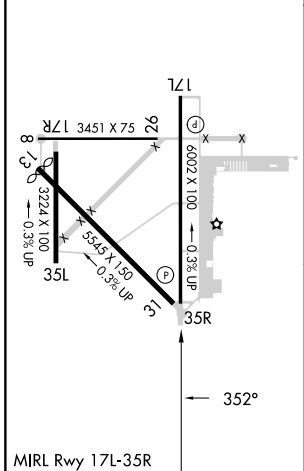
Procedure NA for arrival on SAT  
VORTAC airway radials 175 CW 190.



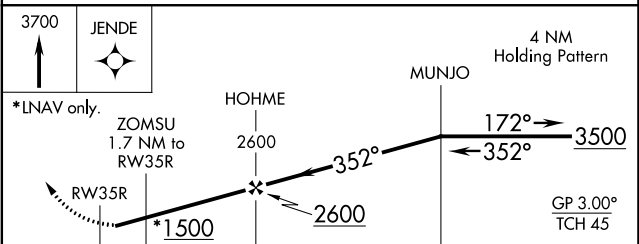
SC-3, 11 JUL 2024 to 08 AUG 2024

SC-3, 11 JUL 2024 to 08 AUG 2024

|          |          |
|----------|----------|
| ELEV 930 | TDZE 917 |
|----------|----------|



HONDO, TEXAS  
Orig-B 15JUL21



| CATEGORY     | A                     | B                     | C                       | D                       |
|--------------|-----------------------|-----------------------|-------------------------|-------------------------|
| LPV DA       | 1170-1                |                       | 253 (300-1)             |                         |
| LNAV/VNAV DA | 1293-1¼               |                       | 376 (400-1¼)            |                         |
| LNAV MDA     | 1360-1                | 443 (500-1)           | 1360-1¼<br>443 (500-1¼) | 1360-1½<br>443 (500-1½) |
| CIRCLING     | 1440-1<br>510 (600-1) | 1520-1<br>590 (600-1) | 1580-1¾<br>650 (700-1¾) | 1580-2<br>650 (700-2)   |

29°22'N-99°11'W

SOUTH TEXAS RGNL AT HONDO (HDO)  
**RNAV (GPS) RWY 35R**