

LOC I-EPD <b>111.1</b>	APP CRS <b>354°</b>	Rwy Idg TDZE Apt Elev <b>9001</b> <b>28</b> <b>33</b>
---------------------------	------------------------	--

# ILS Z or LOC Z RWY 35L

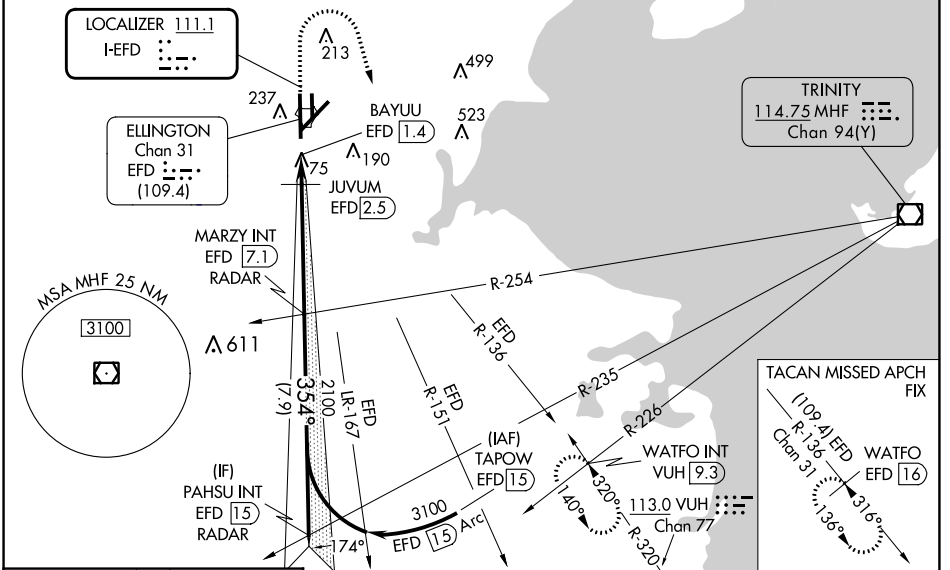
ELLINGTON (EFD)

RADAR required for procedure entry.

**⚠** Circling NA west of Rwy 17R-35L. DME from EFD TACAN. Simultaneous reception of I-EPD and EFD DME required. Inop table does not apply to S-ILS 35L. For inop ALS, increase S-LOC 35L Cat C/D/E visibility to 1 3/4 SM. For inop ALS when using JUVUM fix minimums, increase S-LOC 35L Cat C/D/E visibility to RVR 6000.

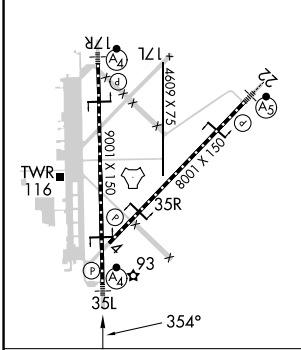
**MALSF**  
**⚠** MISSED APPROACH: Climb to 700 then climbing right turn to 3100 on VUH VOR/DME R-320 to WATFO INT/VUH 9.3 DME and hold. (TACAN aircraft climb to 700 then climbing right turn to 3100 on EFD TACAN R-136 to WATFO/EFD 16 DME and hold southeast, left turn, 316° inbound).

ATIS <b>135.575 269.9</b>	HOUSTON APP CON <b>134.45 284.0</b>	ELLINGTON TOWER <b>126.05 253.5</b>	GND CON <b>121.6 275.8</b>
------------------------------	--	--	-------------------------------

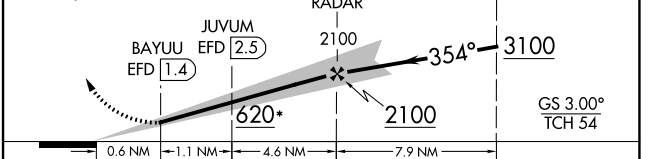


ELEV 33	<b>D</b> TDZE 28
---------	------------------

HIRL Rwy 4-22 and 17R-35L TDZ/CL Rwy 17R, 22 and 35L



700 3100 WATFO INT  
VUH R-320  
\*LOC only.  
MARZY INT EFD 7.1 RADAR  
PAHSU INT EFD 15 RADAR



CATEGORY	A	B	C	D	E
S-ILS 35L	228/40 200 (200-3/4)				
S-LOC 35L	620/40	592 (600-3/4)	620-1 3/8		592 (600-1 3/8)
<b>C</b> CIRCLING	620-1	587 (600-1)	620-1 3/4 587 (600-1 3/4)	640-2 607 (700-2)	700-2 1/4 667 (700-2 1/4)
JUVUM FIX MINIMUMS (DME REQUIRED)					
S-LOC 35L	440/40	412 (500-3/4)	440/50		412 (500-1)
<b>C</b> CIRCLING	500-1	467 (500-1)	580-1 1/2 547 (600-1 1/2)	640-2 607 (700-2)	700-2 1/4 667 (700-2 1/4)

FAF to MAP 5.7 NM					
Knots	60	90	120	150	180
Min:Sec	5:42	3:48	2:51	2:17	1:54

SC-5, 11 JUL 2024 to 08 AUG 2024

SC-5, 11 JUL 2024 to 08 AUG 2024