

# KARR SEVEN DEPARTURE (RNAV)

SC-5, 11 JUL 2024 to 08 AUG 2024

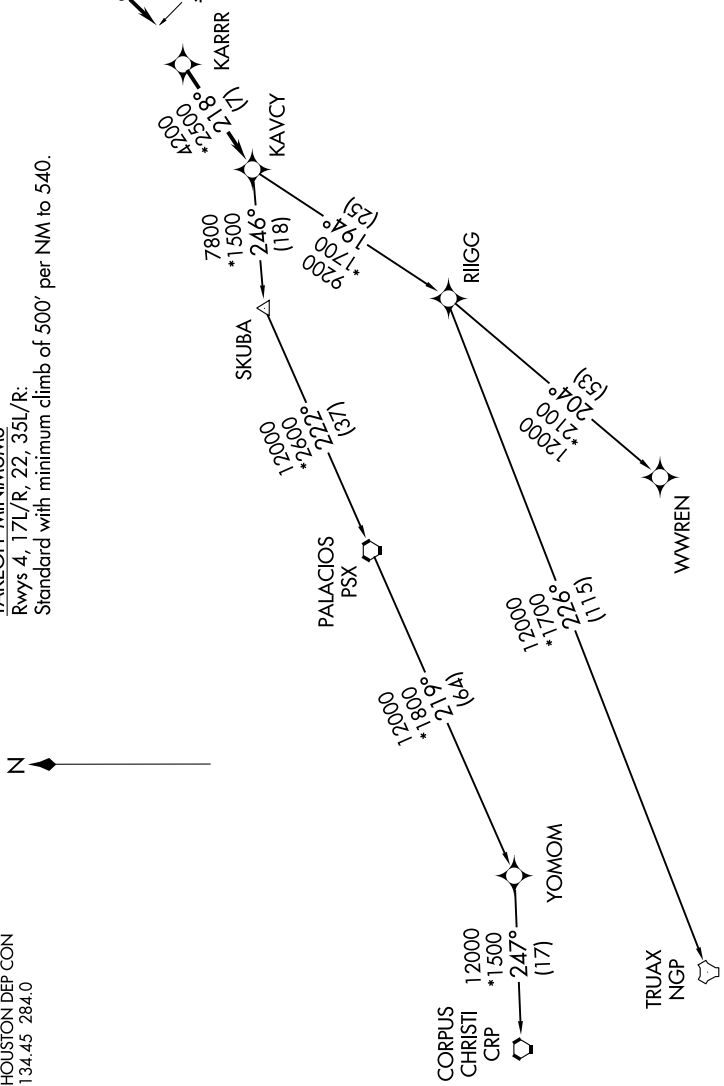
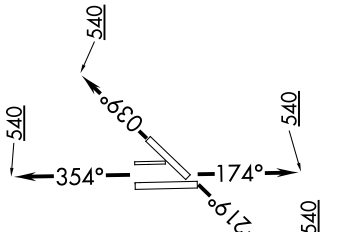
RNAV-1 DME/DME/IRU or GPS.  
RADAR required.

ATIS 135.575 269.9  
GND CON 121.6 275.8  
ELLINGTON TOWER 126.05 253.5  
HOUSTON DEP CON 134.45 284.0

### TAKEOFF MINIMUMS

Rwys 4, 17L/R, 22, 35L/R:  
Standard with minimum climb of 500' per NM to 540.

### TOP ALTITUDE: ASSIGNED BY ATC



NOTE: Chart not to scale.

(NARRATIVE ON FOLLOWING PAGE)

SC-5, 11 JUL 2024 to 08 AUG 2024

# KARR SEVEN DEPARTURE (RNAV)