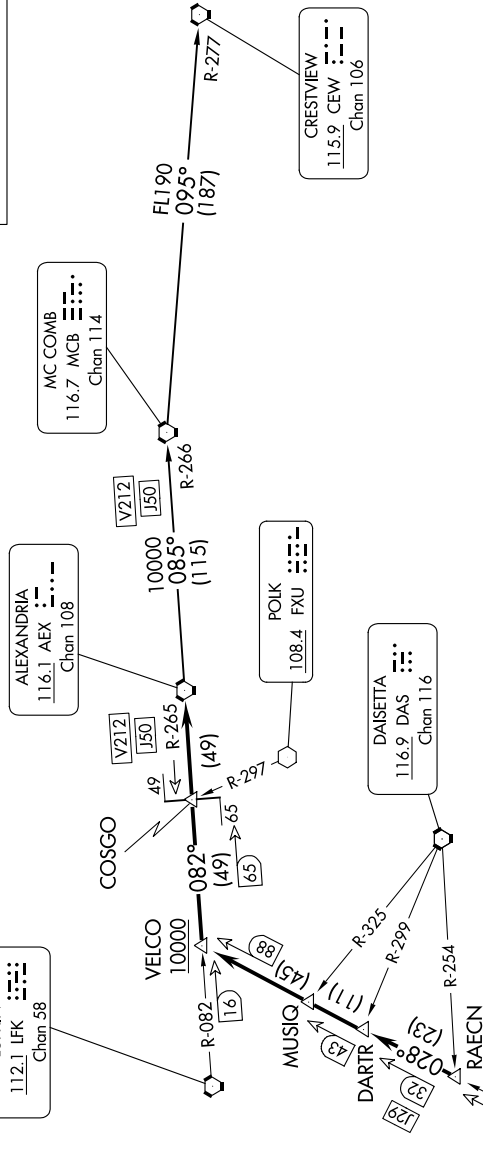


ALEXANDRIA THREE DEPARTURE

**TOP ALTITUDE:
16000**

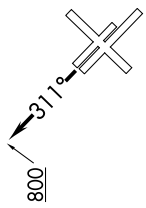
- D-ATIS 124.6
- CLNC DEL 125.45
- CPDIC 121.9
- GND CON 118.7
- HOBBY TOWER 256.9
- HOUSTON DEP CON 132.25
- 285.425



NOTE: RADAR required.
 NOTE: The following TRANSITIONS are ATC assigned only. Do not file.
 CRESTVIEW TRANSITION: (For aircraft being weather rerouted to join a jet route of CEW VORTAC or overflying CEW VORTAC to join a direct route).
 MC COMB TRANSITION: (For aircraft being weather rerouted to join a jet route off MCB VORTAC or overflying MCB VORTAC to join a direct route).

TAKEOFF MINIMUMS

Rwys 4, 13L/R, 31L/R: Standard.
 Rwy 22: Standard with minimum climb of 290' per NM to 1500.



NOTE: Chart not to scale.

(CONTINUED ON FOLLOWING PAGE)

ALEXANDRIA THREE DEPARTURE