


| | | | |
|--|------------------------|---|-------------|
| WAAS CH 50316 W16A | APP CRS 159° | Rwy Idg TDZE 341 Apt Elev 341 | 5387 |
|--|------------------------|---|-------------|

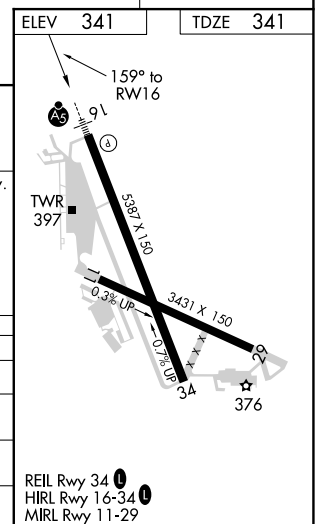
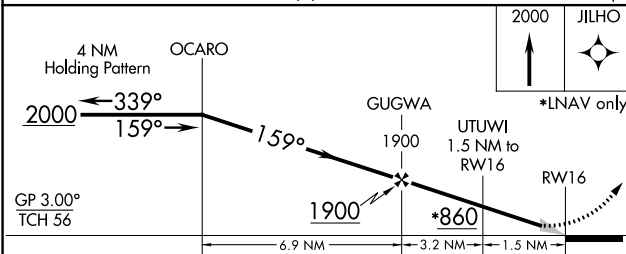
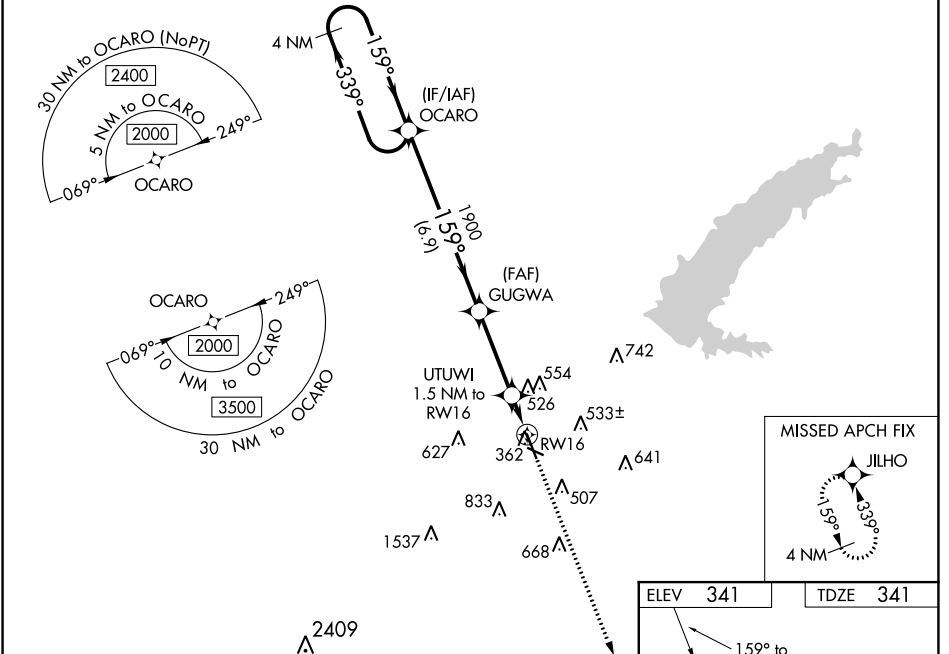
RNAV (GPS) RWY 16

HAWKINS FLD (HKS)

⚠ Baro-VNAV NA when using Jackson-Medgar Wiley Evers Intl altimeter setting. For uncompensated Baro-VNAV systems, LNAV/VNAV NA below -6°C (22°F) or above 54°C (130°F). DME/DME RNP-0.3 NA. When local altimeter setting not received, use Jackson-Medgar Wiley Evers Intl altimeter setting and increase all DA 19 feet and all MDA 20 feet. Increase LNAV/VNAV all Cats and LNAV Cats C/D visibilities 1/8 mile and Circling Cat C 1/4 mile. For inop MALS R when using Jackson-Medgar Wiley Evers Intl altimeter setting increase LNAV/VNAV all Cats to 1 1/8.

MALS R

MISSED APPROACH:
 Climb to 2000 direct JILHO and hold.

| | | | | | |
|------------------------|---|---|-------------------------------|---|-------------------------|
| ASOS 120.625 | JACKSON APP CON * 123.9 319.2 | HAWKINS TOWER * 119.65 (CTAF) 0 257.8 | GND CON 121.9 239.0 | CLNC DEL 121.9 (When twr closed) | UNICOM 122.95 |
|------------------------|---|---|-------------------------------|---|-------------------------|



| CATEGORY | A | B | C | D |
|-----------------|----------------------|----------------------|-------------------------------|------------------------|
| LPV DA | | 542-1/2 | 201 (300-1/2) | |
| LNAV/VNAV DA | | 677-5/8 | 336 (400-5/8) | |
| LNAV MDA | 780-1/2 | 439 (500-1/2) | 780-3/4 | 439 (500-3/4) |
| CIRCLING | 860-1 519 (600-1) | 880-1 539 (600-1) | 1140-2 1/4 799 (800-2 1/4) | 1320-3 979 (1000-3) |

SC-4, 11 JUL 2024 to 08 AUG 2024

SC-4, 11 JUL 2024 to 08 AUG 2024