

VORTAC CRG 114.5 Chan 92	APP CRS 132°	Rwy Idg TDZE 41 Apt Elev 41	4008
--	------------------------	---	-------------

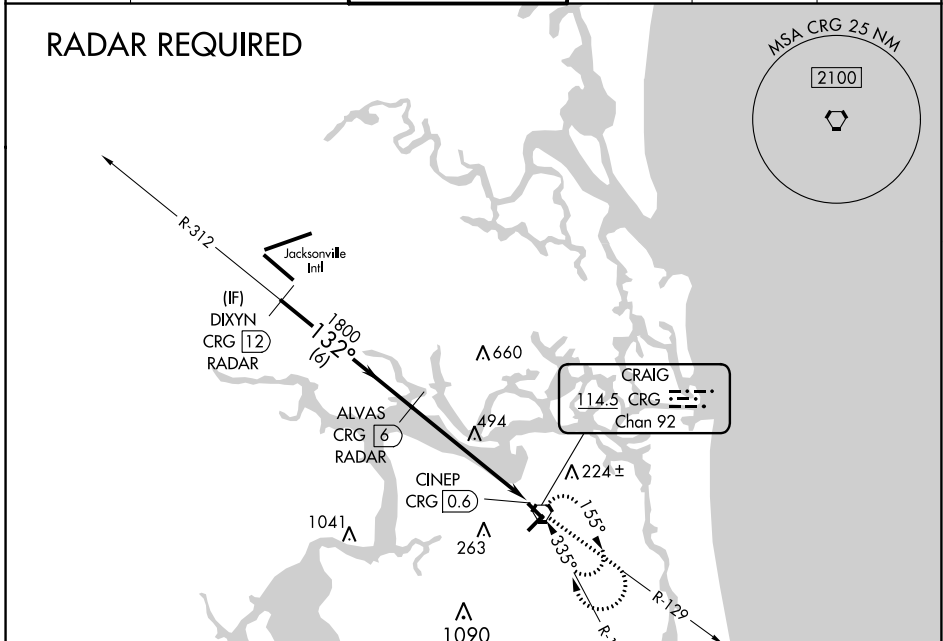
VOR RWY 14

JACKSONVILLE EXEC AT CRAIG (CRG)

Procedure NA at night.
DME or Radar required.
Helicopter visibility reduction below 1 SM NA.

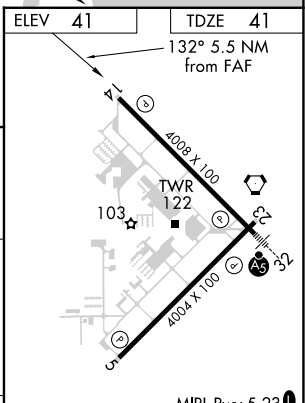
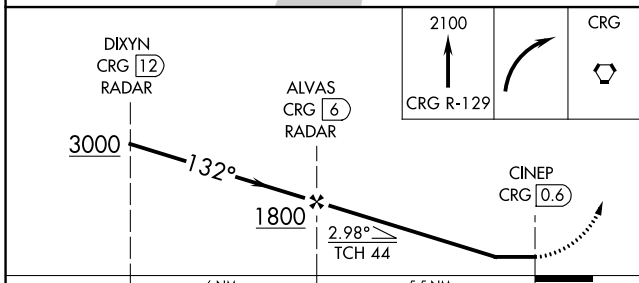
MISSED APPROACH: Climb to 2100 via CRG VORTAC R-129 then right turn direct CRG VORTAC and hold.

ATIS 125.4	JACKSONVILLE APP CON 124.9 308.4	CRAIG TOWER ★ 132.1 (CTAF) 269.525	GND CON 121.8	CLNC DEL 118.35	UNICOM 122.95
----------------------	--	---	-------------------------	---------------------------	-------------------------



SE-3, 11 JUL 2024 to 08 AUG 2024

SE-3, 11 JUL 2024 to 08 AUG 2024



CATEGORY	A	B	C	D
S-14	800-1 759 (800-1)	800-1¼ 759 (800-1¼)	800-2½	759 (800-2½)
CIRCLING	800-1 759 (800-1)	800-1¼ 759 (800-1¼)	800-2½	759 (800-2½)

MIRL Rwy 5-23
HIRL Rwy 14-32
REIL Rws 14 and 23

FAF to MAP 5.5 NM

Knots	60	90	120	150	180
Min:Sec	5:30	3:40	2:45	2:12	1:50