

JACKSONVILLE, FLORIDA

# RNAV (GPS) Z RWY 10

WAAS CH <b>42020</b> W10A	APCH CRS <b>096°</b>	Rwy ldg TDZE Arprt Elev	<b>8006</b> <b>21</b> <b>23</b>
---------------------------------	-------------------------	-------------------------------	---------------------------------------

- (USN)

JACKSONVILLE NAS (TOWERS FLD) (KNIP)

RNP APCH

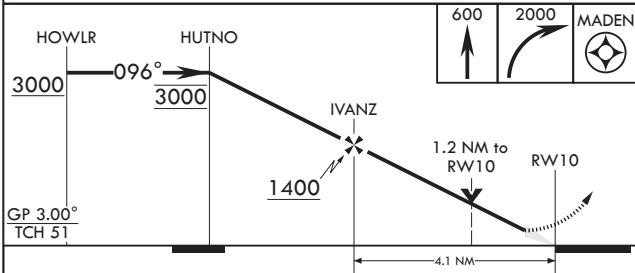
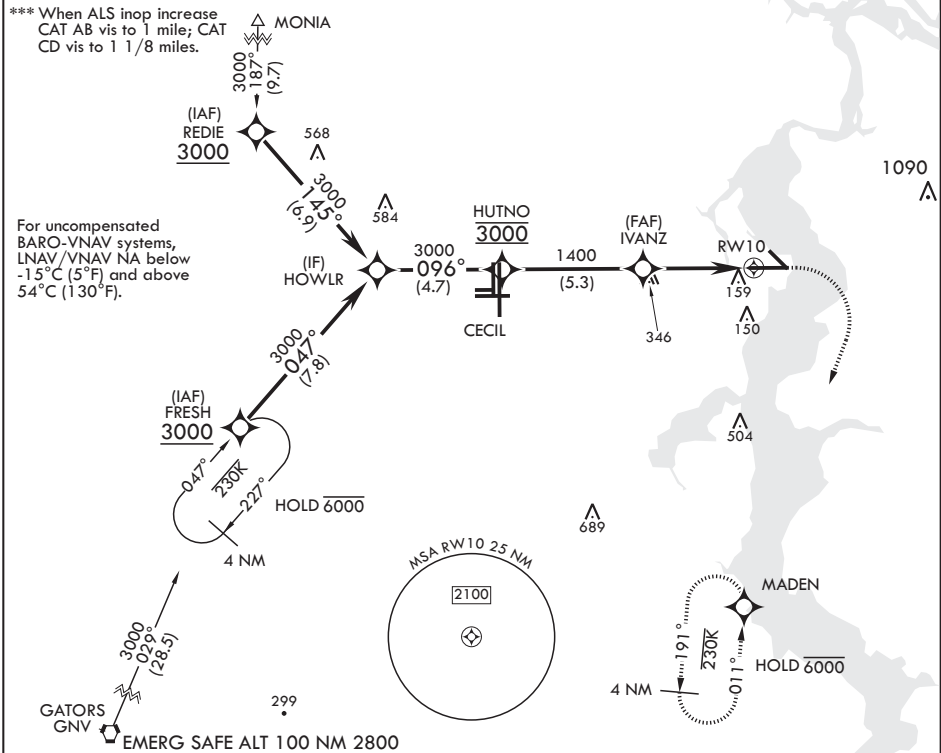
ALS-F1

MISSED APPROACH: Climb to 600 then climbing right turn to 2000 direct MADEN and hold.

▼ \* When ALS inop increase CAT ABCD vis to 3/4 mile.  
\*\* When ALS inop, increase CAT ABCD vis to 1 mile.

ATIS <b>124.35 290.425</b>	APP CON/DEP CON <b>127.775 377.075</b>	TOWER <b>125.15 (CTAF) 340.2</b>	GND CON <b>128.6 336.4</b>	CLNC DEL <b>134.775 353.675</b>	ASR/PAR
-------------------------------	---	-------------------------------------	-------------------------------	------------------------------------	---------

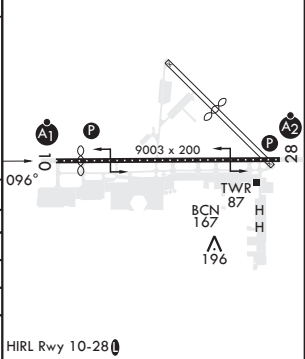
\*\*\* When ALS inop increase CAT AB vis to 1 mile; CAT CD vis to 1 1/8 miles.



ELEV 23	TDZE 21
---------	---------

Rwy 10 ldg 8006'  
Rwy 14 ldg 3244'

CATEGORY	A	B	C	D
LPV DA*	221-1/2	200	(200-1/2)	
LNAV/VNAV DA**	387-5/8	366	(400-5/8)	
LNAV MDA***	440-1/2	419 (500-1/2)	440-3/4	419 (500-3/4)
CIRCLING	500-1	477 (500-1)	560-1 1/2 537 (600-1 1/2)	780-2 1/2 757 (800-2 1/2)



JACKSONVILLE, FLORIDA

30°14'N - 81°41'W

JACKSONVILLE NAS (TOWERS FLD) (KNIP)

Amdt 1 03NOV22

# RNAV (GPS) Z RWY 10

SE-3, 11 JUL 2024 to 08 AUG 2024

SE-3, 11 JUL 2024 to 08 AUG 2024