


LOC/DME I-MKC 109.9 Chan 36	APP CRS 192°	Rwy Idg 6525 TDZE 754 Apt Elev 757
--	------------------------	---

ILS or LOC RWY 19

CHARLES B WHEELER DOWNTOWN (MKC)

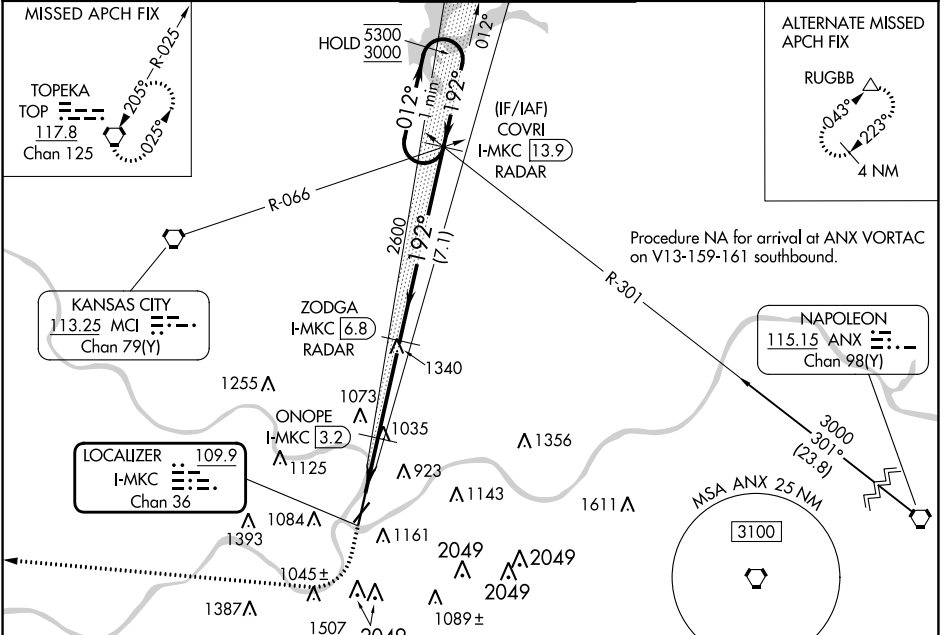
DME or RADAR required for LOC only. DME or RADAR required for procedure entry.

▼ Circling NA east of Rwy 1-19. Circling NA to Rwy 22. For inop ALS, increase S-LOC 19 Cat C/D visibility to 2 SM. Circling NA for Cat D to Rwy 4. Rwy 19 helicopter visibility reduction below RVR 4000 NA. S-ILS 19 inop table does not apply.

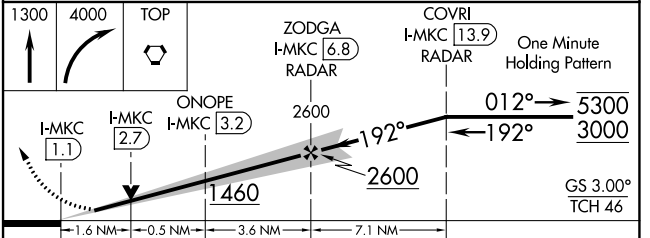
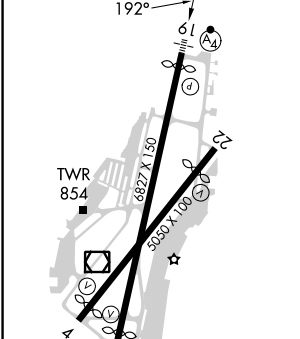
MALSF 

MISSED APPROACH: Climb to 1300 then climbing right turn to 4000 direct TOP VORTAC and hold.

ATIS 120.75	KANSAS CITY APP CON 118.4 307.35	DOWNTOWN TOWER 133.3 233.7	CLNC DEL 121.9	GND CON 121.9
-----------------------	--	--------------------------------------	--------------------------	-------------------------



ELEV 757	D	TDZE 754
----------	----------	----------



CATEGORY	A	B	C	D
S-ILS 19	1004/40 250 (300-¾)			
S-LOC 19	1460/40 706 (800-¾)	1460/55 706 (800-1)	1460-1⅞ 706 (800-2)	706 (800-1⅞)
C CIRCLING	1460-1 703 (800-1) 1460-2 703 (800-2) 1540-2½ 783 (800-2½)			
ONOPE FIX MINIMUMS				
S-LOC 19	1300/40	546 (600-¾)	1300-1⅓	546 (600-1⅓)
C CIRCLING	1380-1 623 (700-1)	1400-1 643 (700-1)	1460-2 703 (800-2)	1540-2½ 783 (800-2½)

FAF to MAP 5.7 NM					
Knots	60	90	120	150	180
Min:Sec	5:42	3:48	2:51	2:17	1:54

NC-3, 11 JUL 2024 to 08 AUG 2024

NC-3, 11 JUL 2024 to 08 AUG 2024