

(TIFTO8.MCI) 23278

TIFTO EIGHT DEPARTURE

AL-213 (FAA)

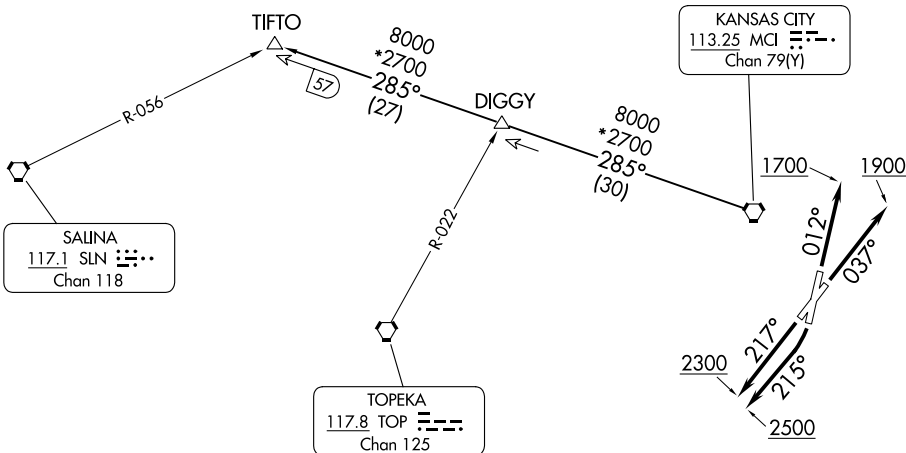
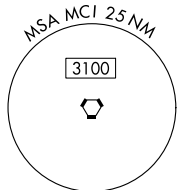
CHARLES B WHEELER DOWNTOWN (MKC)

KANSAS CITY, MISSOURI

**TOP ALTITUDE:
10000**

RADAR and DME required.

KANSAS CITY DEP CON
118.4 307.35
ATIS
120.75
CLNC DEL
121.9



TAKEOFF MINIMUMS

- Rwy 1: 300-1 $\frac{1}{8}$ or standard with minimum climb of 201' per NM to 1000.
- Rwy 4: Standard.
- Rwy 19: Standard with minimum climb of 465'/NM to 2500.
- Rwy 22: 300-1 $\frac{1}{8}$ or standard with minimum climb of 260'/NM to 1000.

NOTE: Chart not to scale



DEPARTURE ROUTE DESCRIPTION

TAKEOFF RUNWAY 1: Climb on heading 012° to 1700, thence. . . .

TAKEOFF RUNWAY 4: Climb on heading 037° to 1900, thence. . . .

TAKEOFF RUNWAY 19: Climbing right turn heading 215° to 2500, thence. . . .

TAKEOFF RUNWAY 22: Climb on heading 217° to 2300, thence. . . .

. . . .climb on assigned heading for RADAR vectors to appropriate route. Maintain 10000, expect filed altitude 10 minutes after departure.

TIFTO TRANSITION (TIFTO8.TIFTO): From over MCI VORTAC on MCI R-285 to TIFTO.

TIFTO EIGHT DEPARTURE

(TIFTO8.MCI) 05OCT23

KANSAS CITY, MISSOURI

CHARLES B WHEELER DOWNTOWN (MKC)

NC-3, 11 JUL 2024 to 08 AUG 2024

NC-3, 11 JUL 2024 to 08 AUG 2024