

KEY WEST, FLORIDA

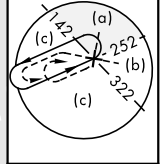
HI-TACAN Z RWY 4

TACAN NQX Chan 78	APCH CRS 044°	Rwy Ldg TDZE 7001 4 6	AL-214 [USN]	KEY WEST NAS (BOCA CHICA FLD)	(KNQX)
----------------------	------------------	--------------------------------	--------------	-------------------------------	--------

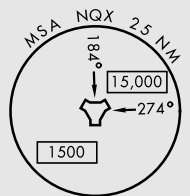
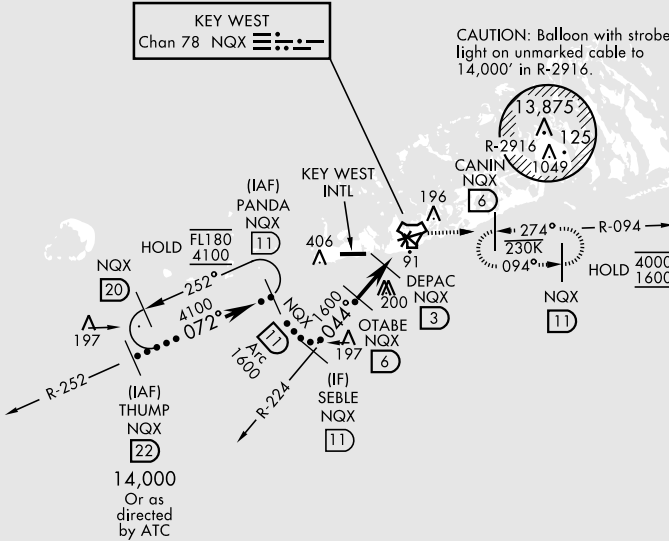
RADAR required	MISSED APPROACH: Climb to 1600 via NQX TACAN R-224 to NQX then via NQX R-094 to CANIN and hold.
----------------	---

ATIS ★ 307.025	NAVY KEY WEST APP CON 124.025 313.7	NAVY KEY WEST TOWER ★ 118.575 340.25	GND CON 121.7 336.45	CLNC DEL 121.2 357.4	ASR/PAR
-------------------	--	---	-------------------------	-------------------------	---------

CAUTION: Short Intermediate Segment

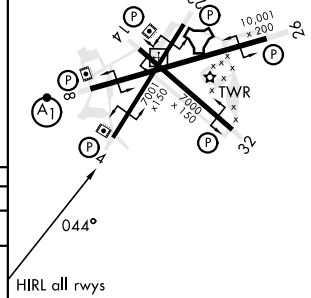


CAUTION: Balloon with strobe light on unmarked cable to 14,000' in R-2916.



EMERG SAFE ALT 100 NM 15,000

†from DEPAC to MAP		1600 NQX R-224	NQX	NQX R-094	ELEV 6	TDZE 4
<p>THUMP R-252 (22) 14,000 Or as directed by ATC</p> <p>PANDA R-252 (11) 4100</p> <p>SEBLE R-224 (11) 1600 Arc</p> <p>OTABE (6) 640</p> <p>DEPAC (3) 1600</p> <p>TACAN HEVEL (1.8)</p> <p>3.04° TCH 35</p> <p>072°</p> <p>044°</p> <p>1600</p> <p>640</p> <p>3 NM</p> <p>1.2 NM</p> <p>0.7</p> <p>VGSI and decent angles not coincident (VGSI Angle 3.00/TCH 50).</p>						
CATEGORY	C	D	E			
S-4	360-1	356 (400-1)				
CIRCLING	500-1½ 494 (500-1½)	560-2	554 (600-2)			



SE-3, 11 JUL 2024 to 08 AUG 2024

SE-3, 11 JUL 2024 to 08 AUG 2024

KEY WEST, FLORIDA

24°34'N-81°41'W KEY WEST NAS (BOCA CHICA FLD) (KNQX)

Amdt 4 23FEB23

HI-TACAN Z RWY 4