

KEY WEST, FLORIDA

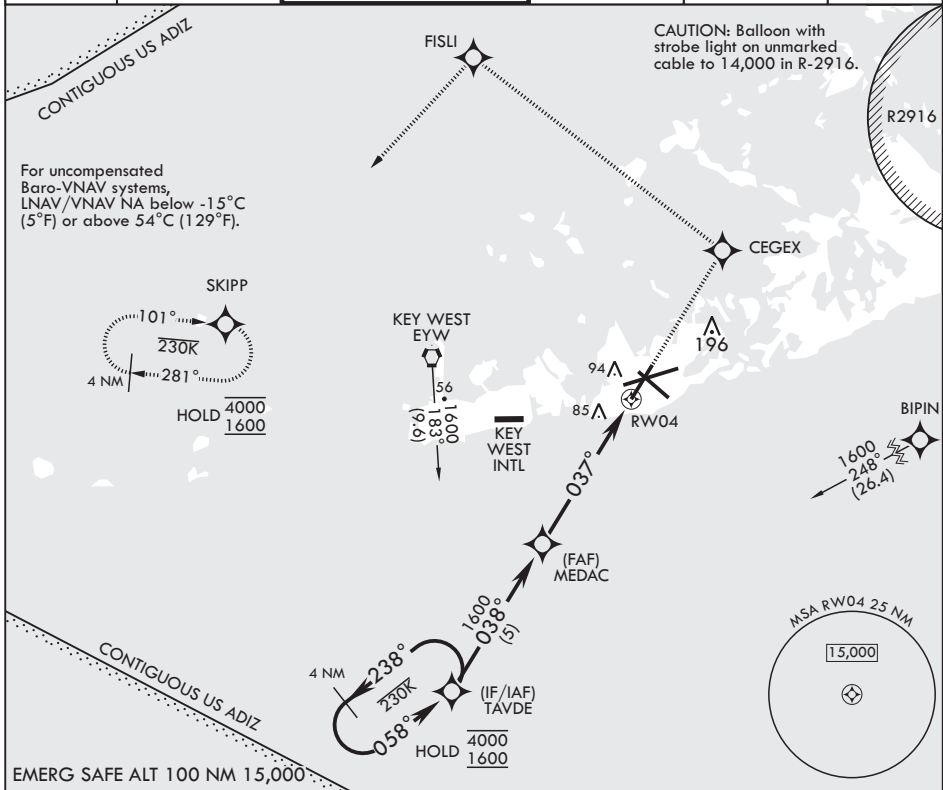
RNAV (GPS) RWY 4

APCH CRS 037°	Rwy Idg TDZE Arprt Elev	7001 4 6
------------------	-------------------------------	----------------

AL-214 (USN) KEY WEST NAS (BOCA CHICA FLD) (KNQX)

RNP APCH	MISSED APPROACH: (Do not exceed 230 KIAS until CEGEX.) Climb to 1600 direct CEGEX, track 314° to FISLI, track 229° to SKIPP and hold.		
RADAR required			

ATIS★ 307.025	APP CON 124.025 313.7	NAVY KEY WEST TOWER★ 118.575 340.25	GND CON 121.7 336.45	CLNC DEL 121.2 357.4	ASR/PAR
------------------	--------------------------	--	-------------------------	-------------------------	---------



CATEGORY	VGS1 and RNAV glidepath not coincident (VGS1 Angle 3.00/TCH 35).			
	A	B	C	D
LNAV/VNAV DA	245-¾ 250 (300-¾)			
LNAV MDA	460-1 456 (500-1)	460-1½ 456 (500-1%)		
CIRCLING	460-1 454 (500-1)	500-1 494 (500-1)	500-1½ 494 (500-1½)	560-2 554 (600-2)

KEY WEST, FLORIDA 24°34'N - 81°41'W KEY WEST NAS (BOCA CHICA FLD) (KNQX)

RNAV (GPS) RWY 4

Amdt 2 23FEB23

SE-3, 11 JUL 2024 to 08 AUG 2024

SE-3, 11 JUL 2024 to 08 AUG 2024